

INSTRUMENT APPROACH  
CHART (IAC)

ALTA FLORESTA / Aeroporto Piloto Osvaldo Marques Dias (SBAT)

AD ELEV: 948'

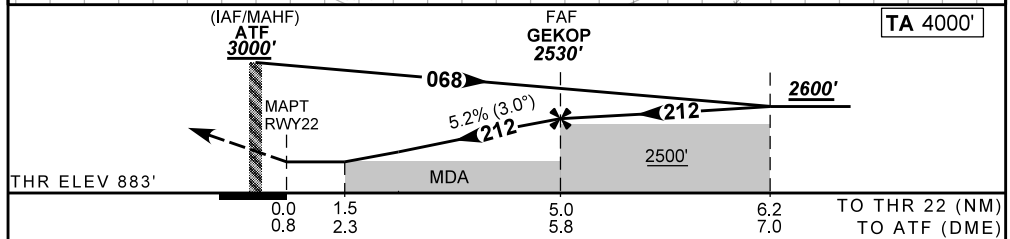
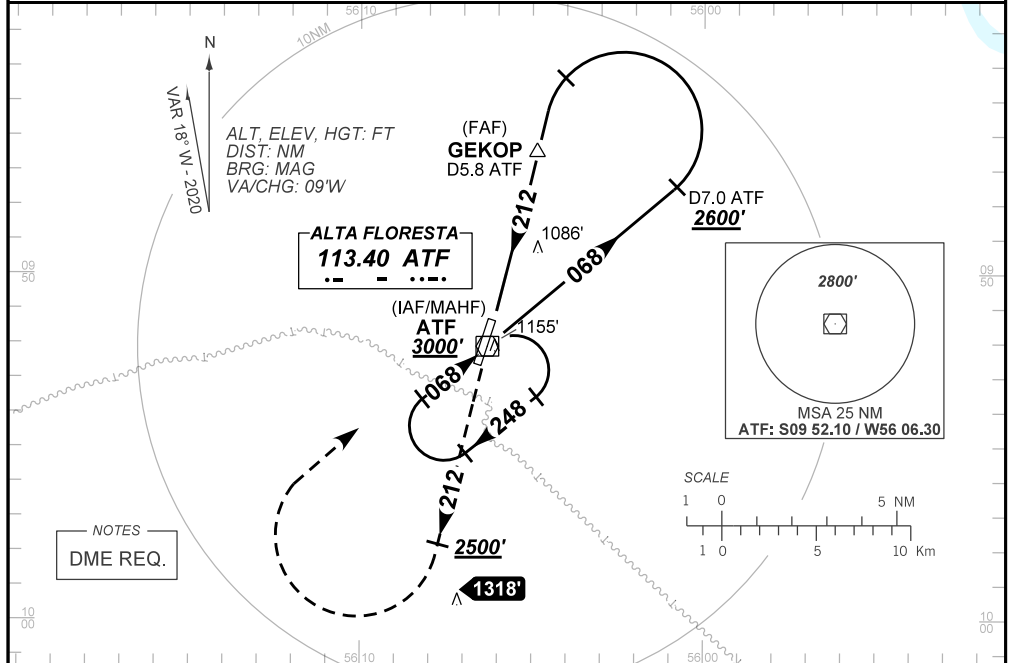
VOR Z RWY 22

ATIS NIL	APP NIL	AFIS FLORESTA 126.60	GNDC NIL	
VOR ATF 113.40	FINAL CRS 212°	FAF: 2530'	N/A	VOR MDA / (OCH): 1410' / (530')

APCH Perdida: Subir para **3000'**. Manter a RDL **212** do VOR ATF até **2500'**. Então, curvar à DIREITA direto VOR ATF para espera.

Missed APCH: Climb to **3000'**. Maintain **212** RDL ATF VOR until **2500'**. Then, turn RIGHT direct to ATF VOR for holding.

RMK: NIL



RWY22	1.5	2.0	3.0	4.0	GEKOP		KT	090	110	130	150	170	190
ALT	1410	1571	1007	2208	2530		FPM	500	600	700	800	900	1000
(HGT)	530	688	942	1325	1647		FAF-MAPT	NIL					

STRAIGHT-IN	CAT	A	B	C	D	E
VOR	MDA / (OCH)	1410' / (530')				NA
	ALS/NO ALS/ RVR ALS (m)	NIL / 1600 / NIL				
CIRCLING	MDA / (OCH)	NA				
	VIS (m)					

CHANGES: LAYOUT, MDA, PROC. VIS