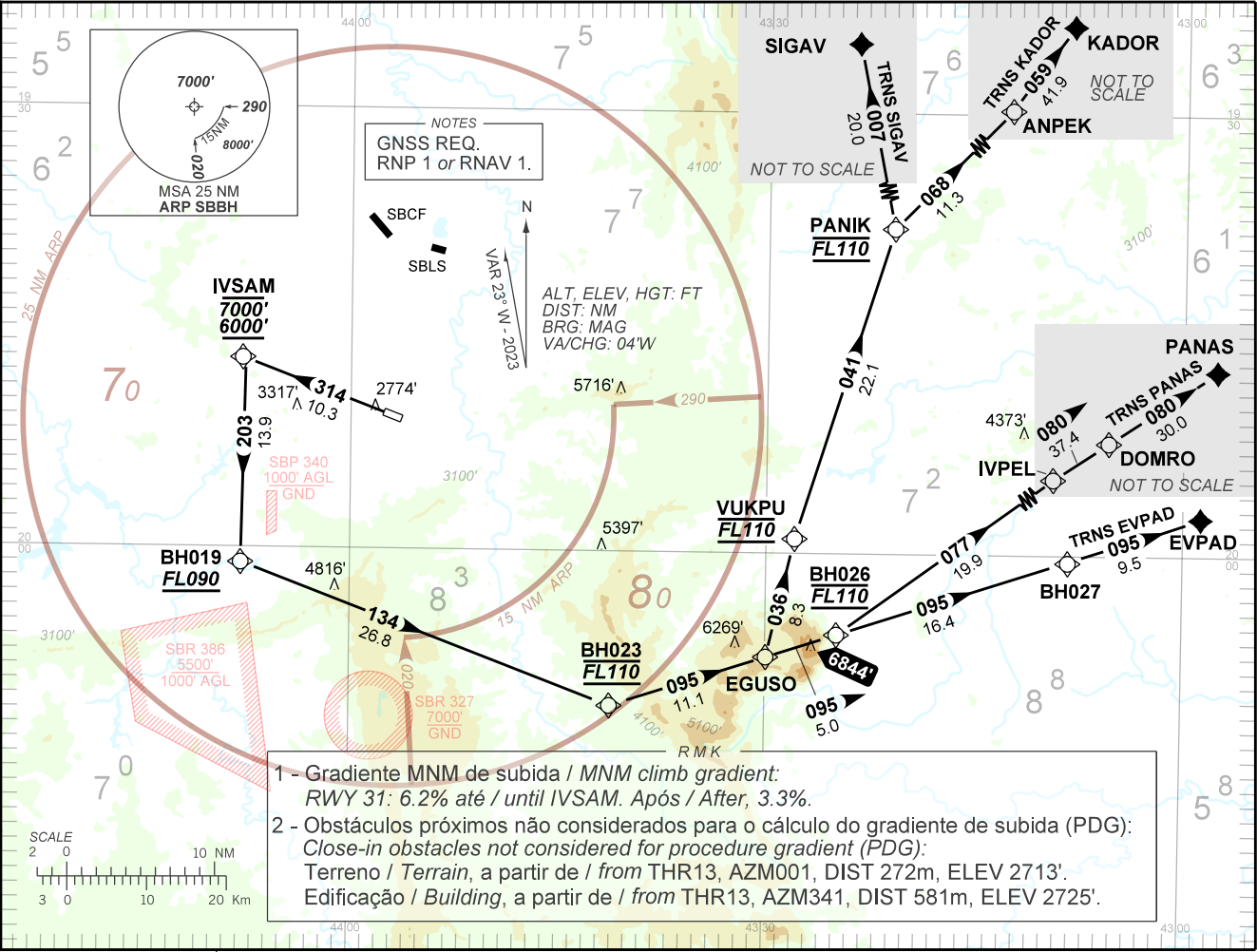


STANDARD DEPARTURE  
CHART INSTRUMENT(SID)  
AD ELEV: 2589'

BELO HORIZONTE / Pampulha - Carlos Drummond de Andrade (SBBH)  
RWY 31  
RNAV EGUSO 2A

ATIS	127.45
TWR BELO HORIZONTE	118.00
APP BELO HORIZONTE	119.10 119.30 119.65 120.20 128.55 129.10 129.40
ACC BRASILIA	126.75 127.30
RNAV EGUSO 2A	



1 - Gradiente MNM de subida / MNM climb gradient:  
RWY 31: 6.2% até / until IVSAM. Após / After, 3.3%.

2 - Obstáculos próximos não considerados para o cálculo do gradiente de subida (PDG):  
Close-in obstacles not considered for procedure gradient (PDG):  
Terreno / Terrain, a partir de / from THR13, AZM001, DIST 272m, ELEV 2713'.  
Edificação / Building, a partir de / from THR13, AZM341, DIST 581m, ELEV 2725'.

DEPARTAMENTO DE CONTROLE DO ESPAÇO AEREO  
SBBH\_SID\_01S 1/1  
SID RNAV EGUSO 2A RWY 31  
AIRC AMDT 2310A2 05 OCT 23  
CHANGES: IDENT, LAYOUT, PROC, RMK.