

**INSTRUMENT APPROACH
CHART (IAC)**

FORTALEZA / Pinto Martins, INTL (SBFZ)

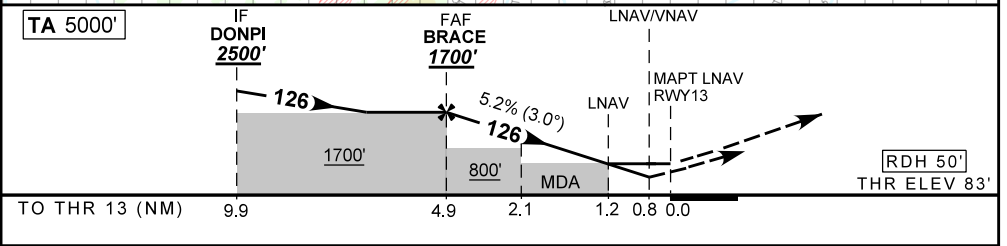
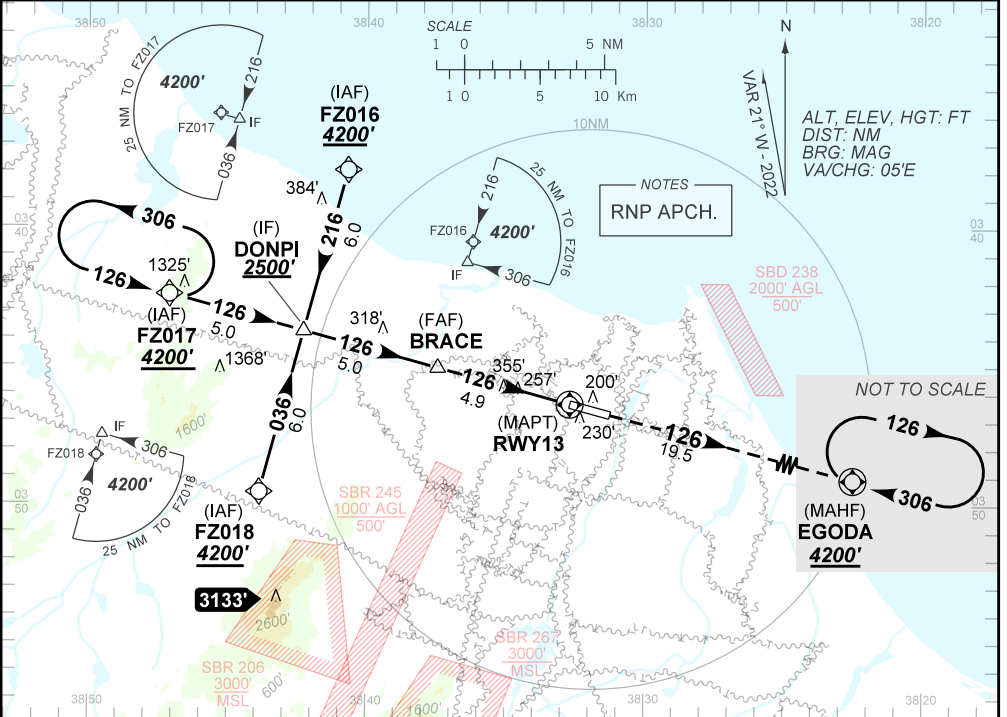
AD ELEV: 83'

RNP Y RWY 13

D-ATIS 127.70	APP FORTALEZA 120.50 133.00 134.55	TWR FORTALEZA 129.00	GNDC FORTALEZA 121.95
TEMP LNAV/VNAV MIN 10°C / MAX 50°C	FINAL CRS 126°	FAF: 1700'	LNAV/VNAV DA / (OCH): 391' / (308')
		LNAV MDA / (OCH): 510' / (430')	

APCH Perdida: Subir para **4200'**. Manter rumo **126** até EGODA para espera.
Missed APCH: Climb to **4200'**. Maintain course **126** to EGODA for holding.

DEPARTAMENTO DE CONTROLE DO ESPAÇO AÉREO



BRACE	4.0	3.0	2.1	2.0	1.2	RWY13	Ground Speed (KT)	090	110	130	150	170	190
1700	1407	1088	809	770	510	ALT	FPM	500	600	700	800	900	NA
1617	1324	1005	726	687	430	(HGT)	FAF-MAPT	NIL					

CHANGES: NEW CHART.

STRAIGHT-IN	CAT	A	B	C	D	E
LNAV/VNAV	DA / (OCH)	391' / (308')				NA
	ALS/NO ALS/ RVR ALS (m)	NIL / 1400 / NIL				
LNAV	MDA / (OCH)	510' / (430')				
	ALS/NO ALS/ RVR ALS (m)	NIL / 1600 / NIL		NIL / 2000 / NIL		
CIRCLING	MDA / (OCH)	NA				
	VIS (m)					

AMDT 2209C 08 SEP 22

SBFZ IAC 00P 1/1
IAC RNP Y WY 13