

**INSTRUMENT APPROACH  
CHART (IAC)**

**BOA VISTA / Atlas Brasil Cantanhede, INTL (SBBV)**

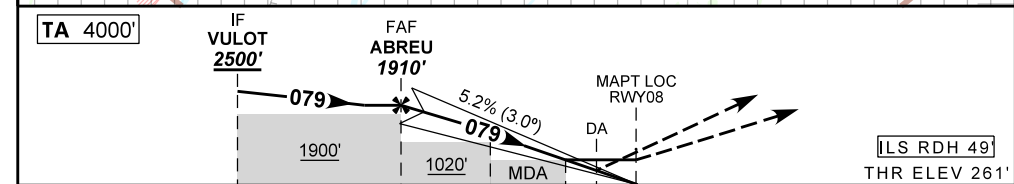
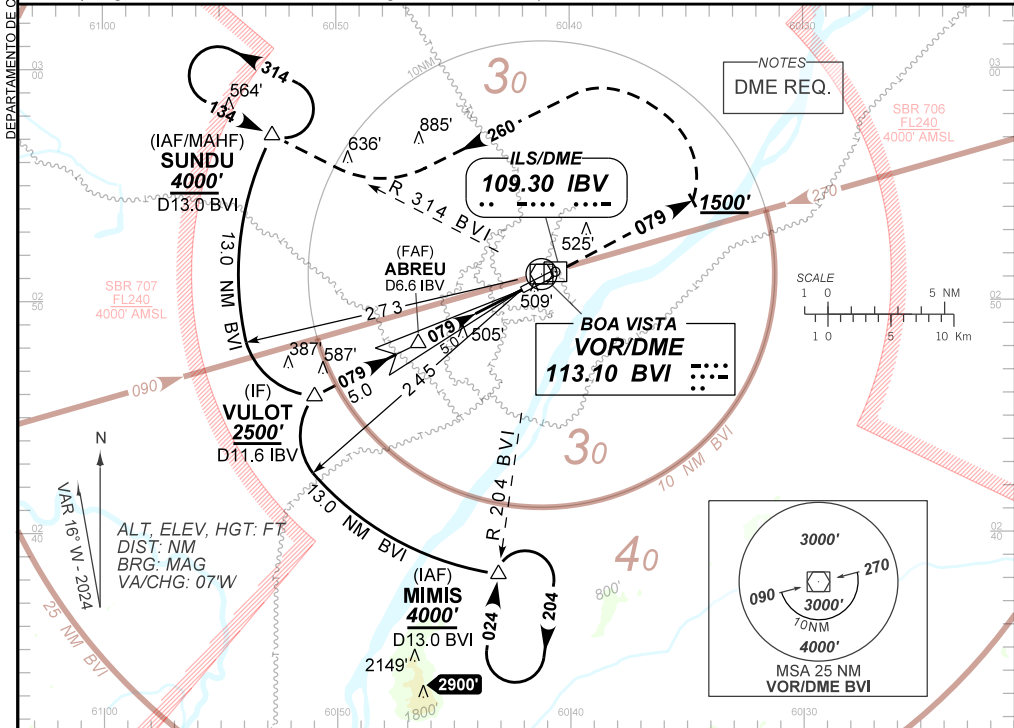
**AD ELEV: 276'**

**ILS U or LOC U RWY 08**

D-ATIS <b>127.60</b>	APP BOA VISTA <b>119.35 120.10</b>	TWR BOA VISTA <b>118.10 118.30</b>	GNDC <b>NIL</b>
-------------------------	---------------------------------------	---------------------------------------	--------------------

ILS/DME IBV <b>109.30 MHz</b>	FINAL CRS <b>079°</b>	FAF: <b>1910'</b>	DA / (OCH): <b>CAT I</b> <b>REFER TO MNM</b>	LOC MDA / (OCH): <b>760' / (500')</b>
----------------------------------	--------------------------	----------------------	---	--

APCH Perdida: 1) Subir para **4000'**. Manter a proa **079** até **1500'**. Após, curvar à ESQUERDA proa **260** até interceptar RDL **314** VOR BVI para espera em SUNDU. 2) IAS MAX 230KT.  
Missed APCH: 1) Climb to **4000'**. Maintain heading **079** until **1500'**. After, turn LEFT heading **260** until intercepting **314** RDL BVI VOR for holding over SUNDU. 2) IAS MAX 230KT.



TO THR 08 (NM)	10.0	5.0	2.2	1.4	0.6	0.0
TO IBV (DME)	11.6	6.6	3.8	3.0	2.2	1.6

ABREU	4.0	3.0	2.2	1.4	RWY08
1910	1584	1265	1020	760	ALT
1649	1323	1004	759	500	(HGT)

Ground Speed (KT)	090	110	130	150	170	190
FPM	500	600	700	800	900	1000
FAF-MAPT	NA					

STRAIGHT-IN	CAT	A	B	C	D	E
CAT I	DA / (OCH)	511' / (250')				688' / (427')
	ALS/NO ALS/ RVR ALS (m)	NIL / 1300 / NIL				NIL / 2000 / NIL
LOC	MDA / (OCH)	760' / (500')				
	ALS/NO ALS/ RVR ALS (m)	NIL / 1600 / NIL		NIL / 2300 / NIL		
CIRCLING	MDA / (OCH)	NA				
	VIS (m)					

AIRAC AMDT 2604A1 16 APR 26

SBBV\_IAC\_001/1/1  
IAC ILS U or LOC U RWY 08

CHANGES: FREQ. VIS.

DEPARTAMENTO DE CONTROLE DO ESPAÇO AÉREO