

**INSTRUMENT APPROACH CHART (IAC)**

**RIO DE JANEIRO / Galeão - Antônio Carlos Jobim, INTL (SBGL)**

**AD ELEV: 28'**

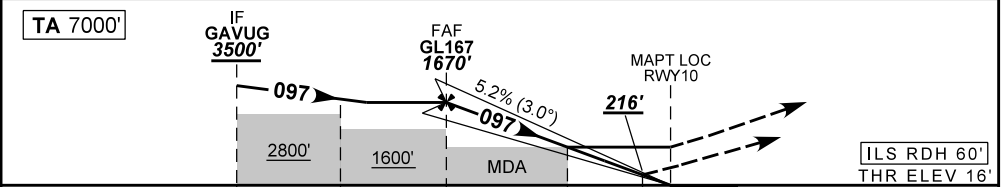
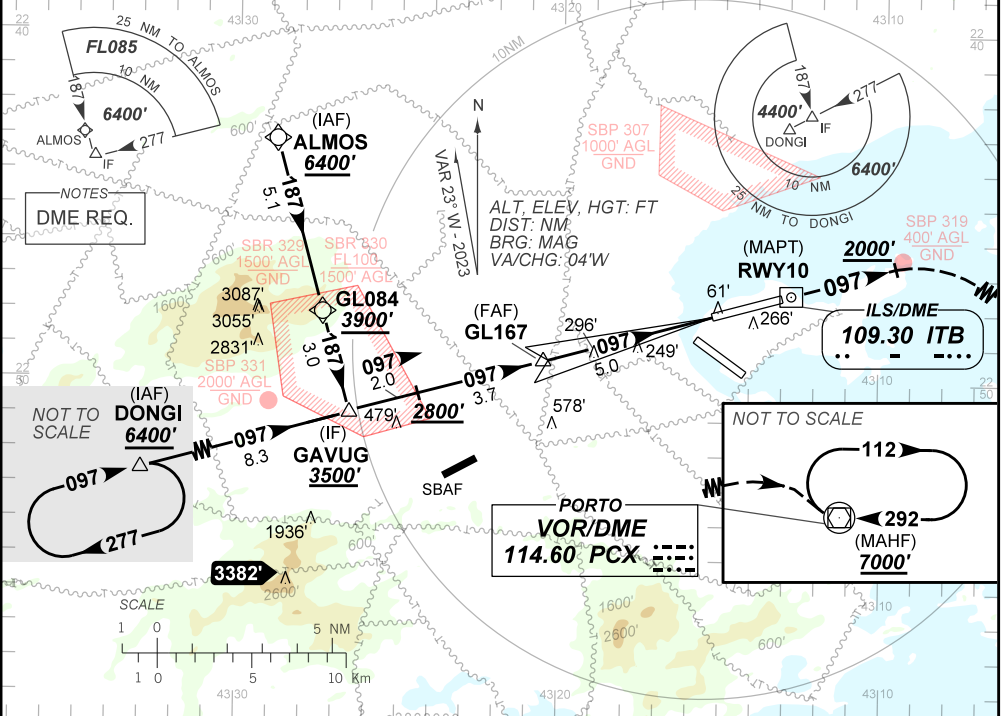
**ILS X or LOC X RWY 10**

D-ATIS <b>127.60</b>	APP RIO <b>124.95 125.95 129.80 134.95</b>			TWR GALEÃO <b>118.00 118.20</b>	GNDC GALEÃO <b>121.65 128.35</b>
ILS/DME ITB <b>109.30 MHz</b>	FINAL CRS <b>097°</b>	FAF: <b>1670'</b>	CAT I DA / (OCH): <b>216' / (200')</b>	LOC MDA / (OCH): <b>550' / (540')</b>	

APCH Perdida: Subir para **7000'**. Manter rumo **097°** até **2000'**. Após, curvar à DIREITA direto VOR PCX para espera.

Missed APCH: Climb to **7000'**. Maintain course **097°** until **2000'**. After, turn RIGHT direct PCX VOR for holding.

DEPARTAMENTO DE CONTROLE DO ESPAÇO AEREO



TO THR 10 (NM)	10.7	8.7	5.0	1.5	0.4	0.0
TO ITB (DME)	13.1	11.1	7.4	3.9	2.8	2.4

	GL167	4.0	3.0	2.0	1.5	RWY10	Ground Speed (KT)	090	110	130	150	170	190
	1670	1350	1031	713	550	ALT	FPM	500	600	700	800	900	1000
	1654	1334	1015	697	540	(HGT)	FAF-MAPT	NA					

STRAIGHT-IN	CAT	A	B	C	D	E
CAT I	DA / (OCH)	216' / (200')				429' / (413')
	ALS/NO ALS/ RVR ALS (m)	800 / 1200 / 550				1500 / 1900 / 1100
LOC	MDA / (OCH)	550' / (540')				
	ALS/NO ALS/ RVR ALS (m)	750 / 1600 / 700	800 / 1600 / 700	1700 / 2400 / 1550		
CIRCLING	MDA / (OCH)	NA				
	VIS (m)	NA				

CHANGES: ALT. MIN.