

**INSTRUMENT APPROACH
CHART (IAC)**

NATAL / Campo Augusto Severo, MIL (SBNT)

AD ELEV: 171'

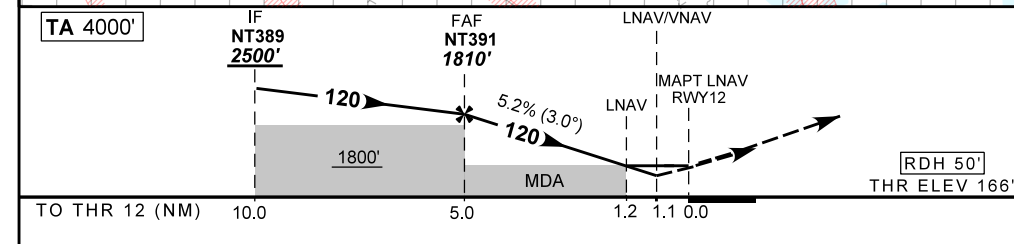
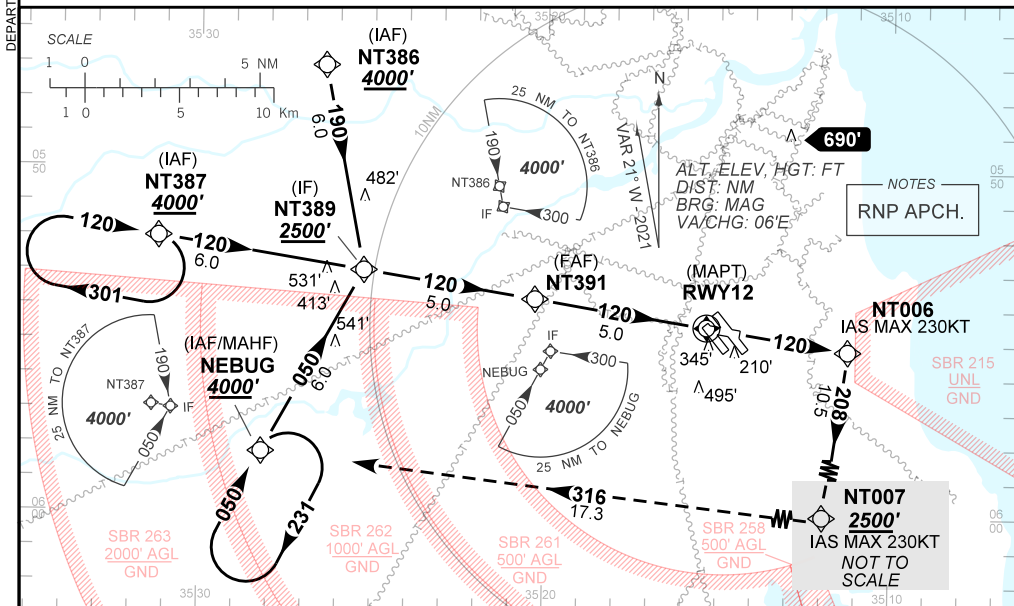
RNP RWY 12

D-ATIS 132.65	APP NATAL 119.30 119.65 120.65 129.80	TWR NATAL 118.70 122.80	GNDC NATAL 121.90
-------------------------	---	-----------------------------------	-----------------------------

TEMP LNAV/VNAV MIN 0°C / MAX 50°C	FINAL CRS 120°	FAF: 1810'	LNAV/VNAV DA / (OCH): 555' / (389')	LNAV MDA / (OCH): 600' / (430')
---	--------------------------	----------------------	---	---

APCH Perdida: 1) Subir para **4000'**. Manter rumo **120** até NT006, então curvar à DIREITA rumo **208** até NT007. Curvar à DIREITA rumo **316** até NEBUG para espera. 2) IAS MAX 230KT até NT007.

Missed APCH: 1) Climb to **4000'**. Maintain course **120** until NT006, then turn RIGHT course **208** until NT007. Turn RIGHT course **316** to NEBUG for holding. 2) IAS MAX 230KT until NT007.



NT391	4.0	3.0	2.0	1.2	RWY12		Ground Speed (KT)	080	100	120	140	160	180
1810	1495	1180	860	600	ALT		FPM	500	600	700	800	900	1000
1639	1324	1009	689	430	(HGT)		FAF-MAPT	NIL					

STRAIGHT-IN	CAT	A	B	C	D	E
	DA / (OCH)	555' / (389')				NA
LNAV/VNAV	ALS/NO ALS/ RVR ALS (m)	NIL / 1800 / NIL				NA
	MDA / (OCH)	600' / (430')				
LNAV	ALS/NO ALS/ RVR ALS (m)	NIL / 1800 / NIL		NIL / 2000 / NIL		
	MDA / (OCH)	NA				
CIRCLING	MDA / (OCH)	NA				
	VIS (m)	NA				