

**INSTRUMENT APPROACH
CHART (IAC)**

BELÉM / Val de Cans - Júlio Cezar Ribeiro, INTL (SBBE)

AD ELEV: 56'

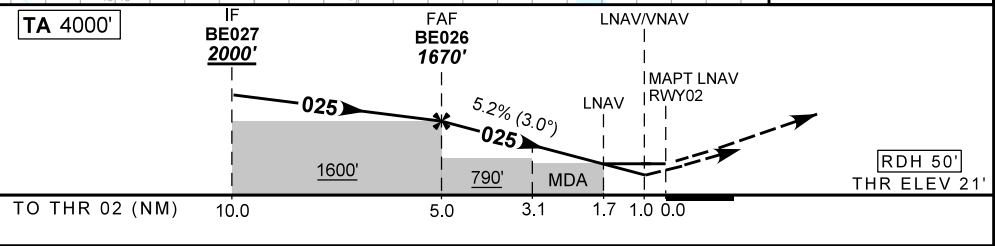
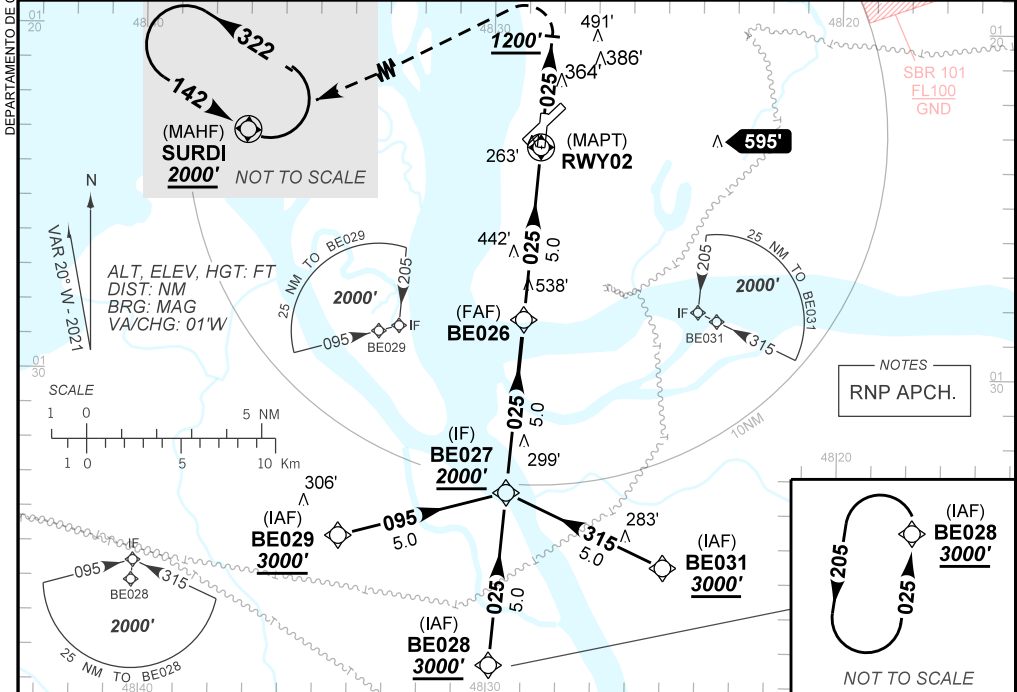
RNP RWY 02

D-ATIS 127.60	APP BELÉM 119.05 119.50	TWR BELÉM 118.70	GNDC BELÉM 121.90
-------------------------	-----------------------------------	----------------------------	-----------------------------

TEMP LNAV/VNAV MIN 10°C / MAX 50°C	FINAL CRS 025°	FAF: 1670'	LNAV/VNAV DA / (OCH): 397' / (376')	LNAV MDA / (OCH): 620' / (600')
--	--------------------------	----------------------	---	---

APCH Perdida: Subir para **2000'**. Manter rumo **025** até **1200'**. Após, curvar à ESQUERDA direto SURDI para espera.

Missed APCH: Climb to **2000'**. Maintain course **025** until **1200'**. Then, turn LEFT direct to SURDI for holding.



	BE026	4.0	3.1	2.0	1.7	RWY02	Ground Speed (KT)	090	110	130	150	170	190	
		1670	1345	1065	708	620	ALT	500	600	700	800	900	NA	
		1649	1324	1044	687	600	(HGT)	FAF-MAPT						NIL

STRAIGHT-IN	CAT	A	B	C	D	E
	DA / (OCH)	397' / (376')				NA
LNAV/VNAV	ALS/NO ALS/ RVR ALS (m)	NIL / 1700 / NIL				
	MDA / (OCH)	620' / (600')				
LNAV	ALS/NO ALS/ RVR ALS (m)	NIL / 1600 / NIL		NIL / 2700 / NIL		
	MDA / (OCH)	NA				
CIRCLING	VIS (m)	NA				

CHANGES: MNM OPR. PROC. RMK. TAA.