

DEPARTURE CHART
INSTRUMENT (SID)

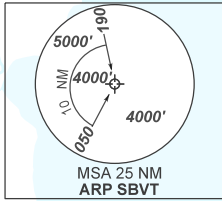
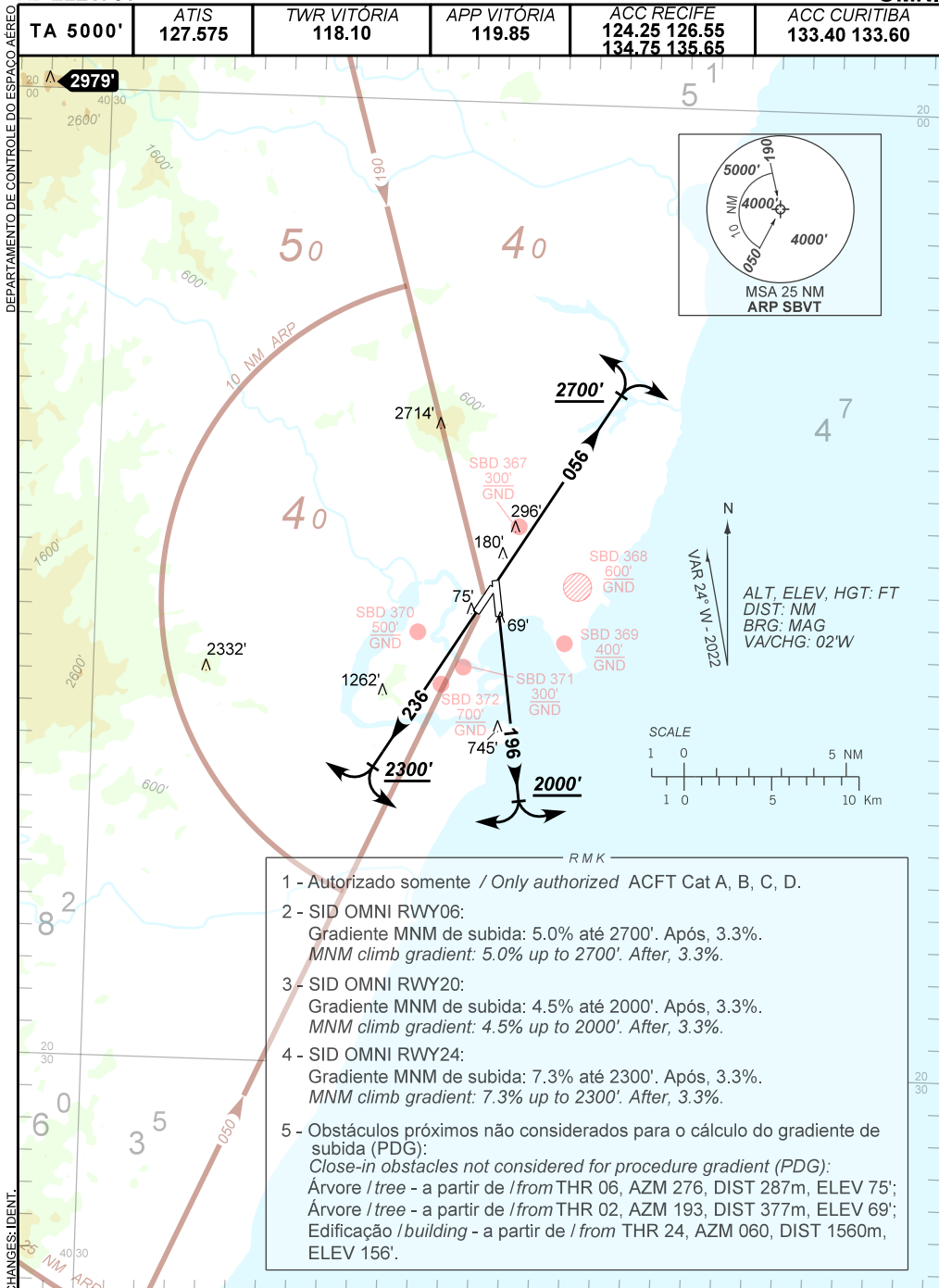
VITÓRIA / Eurico de Aguiar Salles, INTL (SBVT)

RWY 06/20/24

OMNI

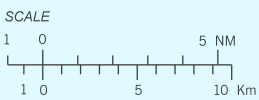
AD ELEV: 34'

TA 5000'	ATIS 127.575	TWR VITÓRIA 118.10	APP VITÓRIA 119.85	ACC RECIFE 124.25 126.55 134.75 135.65	ACC CURITIBA 133.40 133.60
----------	--------------	--------------------	--------------------	---	----------------------------



N
VAR 24° N - 2022

ALT, ELEV, HGT: FT
DIST: NM
BRG: MAG
VA/CHG: 02'W



- RMK
- 1 - Autorizado somente / Only authorized ACFT Cat A, B, C, D.
 - 2 - SID OMNI RWY06:
Gradiente MNM de subida: 5.0% até 2700'. Após, 3.3%.
MNM climb gradient: 5.0% up to 2700'. After, 3.3%.
 - 3 - SID OMNI RWY20:
Gradiente MNM de subida: 4.5% até 2000'. Após, 3.3%.
MNM climb gradient: 4.5% up to 2000'. After, 3.3%.
 - 4 - SID OMNI RWY24:
Gradiente MNM de subida: 7.3% até 2300'. Após, 3.3%.
MNM climb gradient: 7.3% up to 2300'. After, 3.3%.
 - 5 - Obstáculos próximos não considerados para o cálculo do gradiente de subida (PDG):
Close-in obstacles not considered for procedure gradient (PDG):
Árvore / tree - a partir de / from THR 06, AZM 276, DIST 287m, ELEV 75';
Árvore / tree - a partir de / from THR 02, AZM 193, DIST 377m, ELEV 69';
Edificação / building - a partir de / from THR 24, AZM 060, DIST 1560m, ELEV 156'.

CHANGES: IDENT.