

**INSTRUMENT APPROACH
CHART (IAC)**

SANTO ÂNGELO / Santo Ângelo (SBNM)

NDB RWY 12

(CAT A, B, C)

AD ELEV: 1056'

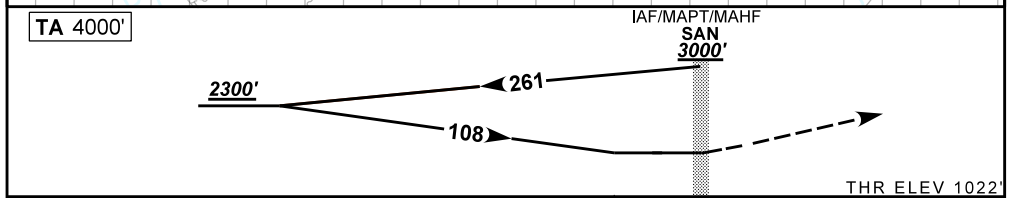
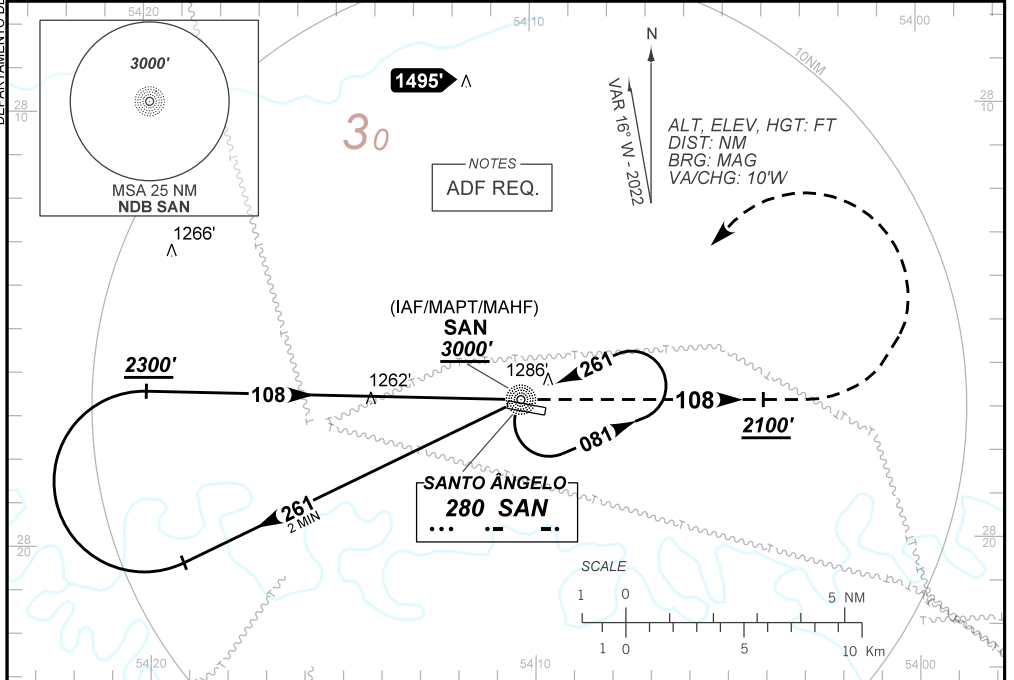
DEPARTAMENTO DE CONTROLE DO ESPAÇO AEREO

ATIS NIL	ERAA 130.425	AFIS SANTO ÂNGELO 131.65		GNDC NIL
-------------	-----------------	-----------------------------	--	-------------

NDB SAN 280 KHz	FINAL CRS 108°	N/A	N/A	NDB MDA / (OCH): 1560' / (540')
--------------------	-------------------	-----	-----	---

APCH Perdida: Subir para **3000'**. Manter QDR **108** do NDB SAN até **2100'**. Após, curvar à ESQUERDA direto NDB SAN para espera.

Missed APCH: Climb to **3000'**. Maintain **108** QDR SAN NDB until **2100'**. After, turn LEFT direct to SAN NDB for holding.



NIL	RWY 12	Ground Speed (KT)	090	110	130	150	170	190
NIL	ALT	FPM	650					NA
NIL	(HGT)	FAF-MAPT	NA					NA

STRAIGHT-IN		CAT	A	B	C	D	E
NDB	MDA / (OCH)	1560' / (540')				NA	
	ALS/NO ALS/ RVR ALS (m)	NIL / 2400 / NIL				NA	
CIRCLING	MDA / (OCH)	NA					
	VIS (m)	NA					

CHANGES: NEW CHART.