

**INSTRUMENT APPROACH
CHART (IAC)**

PARNAÍBA / Prefeito Doutor João Silva Filho, INTL (SBPB)

AD ELEV: 23'

RNP RWY 28

ATIS NIL		APP NIL		AFIS PARNAÍBA 126.60		GNDC NIL	
TEMP LNAV/VNAV MIN 0°C / MAX 48°C		FINAL CRS 274°	FAF: 1660'	LNAV/VNAV DA / (OCH): 1018' / (1000')		LNAV MDA / (OCH): 1020' / (1000')	

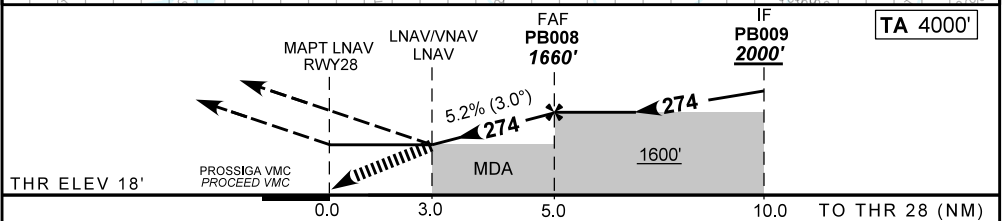
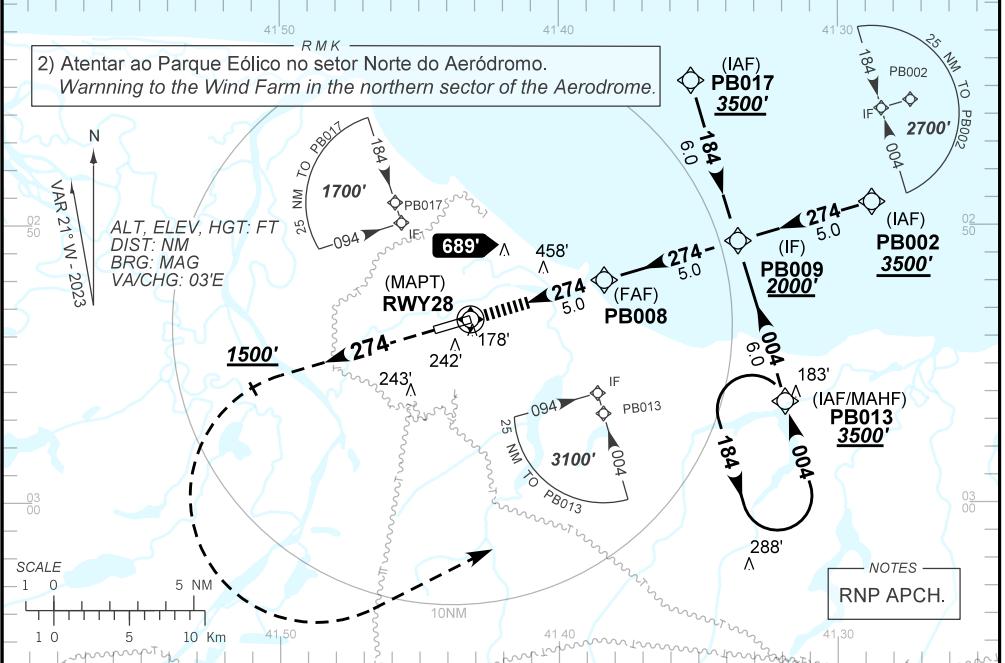
APCH Perdida: Subir para **3500'**. Manter rumo **274** até **1500'**. Após, curvar à ESQUERDA direto PB013 para espera.

Missed APCH: Climb to **3500'**. Maintain course **274** until **1500'**. After, turn LEFT direct PB013 for holding.

RMK: 1) Prosseguir VMC a partir de 3NM do MAPT ou efetuar aproximação perdida.

1) Proceed VMC at 3NM from MAPT or perform the Missed Approach.

2) Atentar ao Parque Eólico no setor Norte do Aeródromo.
Warning to the Wind Farm in the northern sector of the Aerodrome.



				RWY28	3.0	4.0	PB008	Ground Speed (KT)	090	110	130	150	170	190
				ALT	1020	1342	1660	FPM	500	600	700	800	900	1000
				(HGT)	1000	1324	1642	FAF-MAPT	NIL					

STRAIGHT-IN	CAT	A	B	C	D	E
LNAV/VNAV	DA / (OCH)	1018' / (1000')				NA
	ALS/NO ALS/ RVR ALS (m)	NIL / 5000 / NIL				
LNAV	MDA / (OCH)	1020' / (1000')				
	ALS/NO ALS/ RVR ALS (m)	NIL / 5000 / NIL				
CIRCLING	MDA / (OCH)	NA				
	VIS (m)					

CHANGES: IDENT.