

**INSTRUMENT APPROACH  
CHART (IAC)**

**BRASÍLIA / Pres. Juscelino Kubitschek, INTL (SBBR)**

**AD ELEV: 3498'**

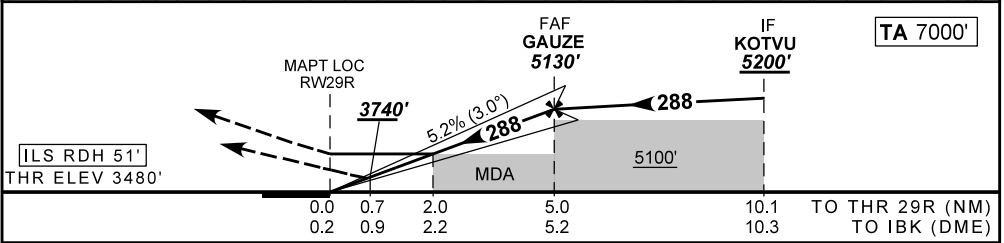
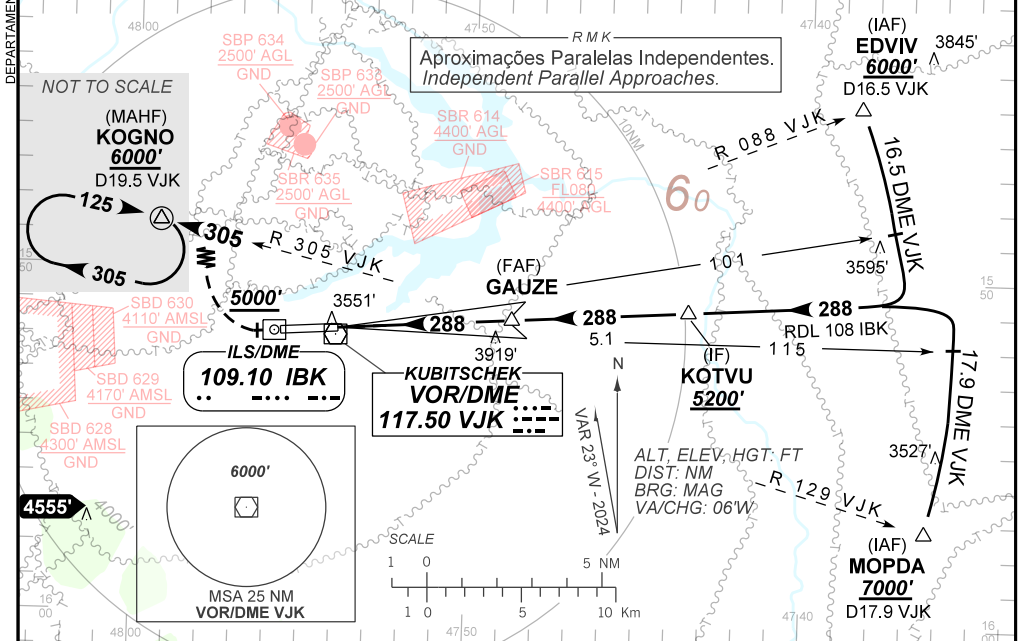
**ILS Y or LOC Y RWY 29R**

D-ATIS <b>127.80</b>	APP BRASÍLIA <b>119.70 129.60 119.20 120.00</b>		TWR BRASÍLIA <b>118.10 118.45 118.75</b>	GND C BRASÍLIA <b>121.80 121.95</b>
ILS/DME IBK <b>109.10 MHz</b>	FINAL CRS <b>288°</b>	FAF: <b>5130'</b>	CAT I DA / (OCH): <b>3740' / (260')</b>	LOC MDA / (OCH): <b>4170' / (690')</b>

APCH Perdida: Subir para **6000'**. Manter proa **288** até **5000'**. Após, curvar à DIREITA para interceptar RDL **305** do VOR VJK até KOGNO para espera.

Missed APCH: Climb to **6000'**. Maintain heading **288** until **5000'**. After, turn RIGHT to intercept **305** RDL VJK VOR to KOGNO for holding.

RMK: (\*)VIS RVR ALS 550m para APCH utilizando Diretor de Voo, Piloto Automático ou Head-Up Display (HUD).  
(\*)VIS RVR ALS 550m for APCH using a Flight Director, Autopilot or Head-Up Display (HUD).



RWY29R	0.7	2.0	3.0	4.0	GAUZE	Ground Speed (KT)	090	110	130	150	170	190
ALT	3740	4170	4486	4805	5130	FPM	500	600	700	800	900	1000
(HGT)	260	690	1006	1325	1650	FAF-MAPT	NA					

STRAIGHT-IN	CAT	A	B	C	D	E
	DA / (OCH)	3740' / (260')				
CAT I	ALS/NO ALS/ RVR ALS (m)	800 / 1300 / 700*				
	MDA / (OCH)	4170' / (690')				
LOC	ALS/NO ALS/ RVR ALS (m)	800 / 1600 / 700		NIL / 3200 / 2500		
	MDA / (OCH)	NA				
CIRCLING	MDA / (OCH)	NA				
	VIS (m)	NA				

CHANGES: NEW CHART.