

**INSTRUMENT APPROACH CHART (IAC)**

**SÃO PAULO / Guarulhos - Gov. André Franco Montoro, INTL (SBGR)**

**AD ELEV: 2461'**

**ILS W RWY 27L**

D-ATIS <b>127.75</b>	APP SÃO PAULO <b>119.15 120.85 122.75 123.25 129.00 129.75</b>	TWR GUARULHOS <b>118.40 132.75 135.20</b>	GNDC GUARULHOS <b>121.70 126.90</b>
-------------------------	---	--	--

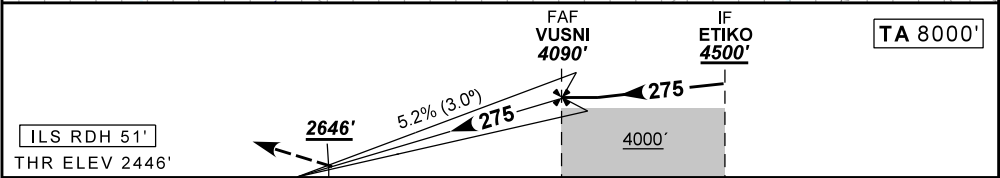
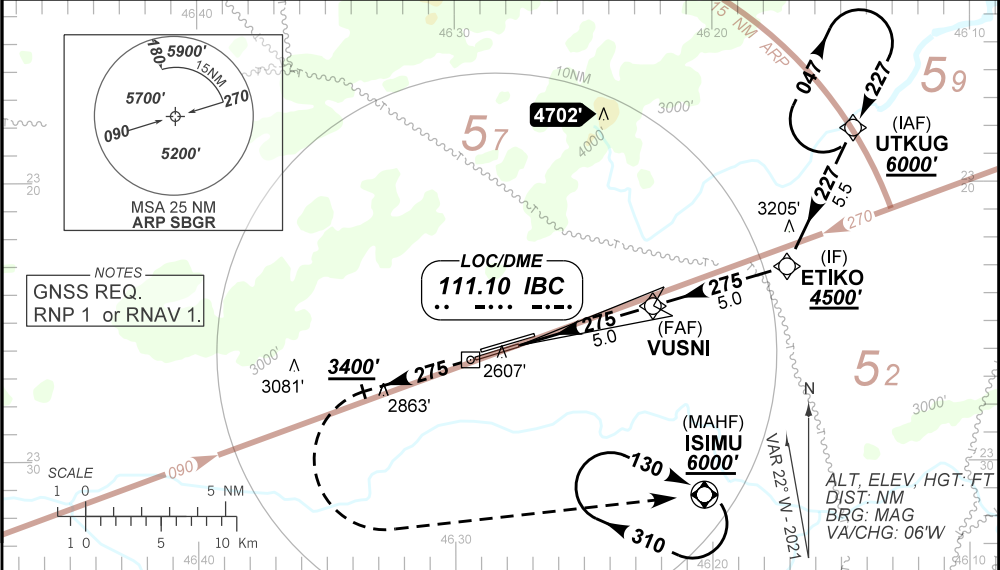
LOC IBC <b>111.10 MHz</b>	FINAL CRS <b>275°</b>	FAF: <b>4090'</b>	CAT I DA / (OCH): <b>2646' / (200')</b>	<b>N/A</b>
------------------------------	--------------------------	----------------------	--	------------

APCH Perdida: Subir para **6000'**. Manter rumo **275°** até **3400'**. Após, curvar à ESQUERDA direto ISIMU para espera. IAS MAX 230KT.  
Missed APCH: Climb to **6000'**. Maintain course **275°** until **3400'**. Then, turn LEFT direct to ISIMU for holding. IAS MAX 230KT.

RMK:1(\*)VIS RVR ALS 550m para APCH utilizando Diretor de Voo, Piloto Automático ou HUD;  
(\*) VIS RVR ALS 550m for APCH using a Flight Director, Autopilot or HUD.

ARREMETIDA VISUAL RWY 27R: Subir para **6000'**. Manter proa **275°** até atingir **6000'**. Após, curvar à DIREITA para **085°** e aguardar instruções ATC.  
VISUAL GO AROUND RWY 27R: Climb to **6000'**. Mantain heading **275°** until reaching **6000'**. Then, turn RIGHT heading **085°** and expect ATC intructions.

DEPARTAMENTO DE CONTROLE DO ESPAÇO AÉREO



ILS RDH 51'	THR ELEV 2446'	0.0	0.5	5.0	10.0	TO THR 27L (NM)
		0.2	0.7	5.2	10.2	TO IBC (DME)

RWY27L	0.5	2.0	3.0	4.0	VUSNI	Ground Speed (KT)	090	110	130	150	170	190
ALT	2646	3133	3452	3770	4090	FPM	500	600	700	800	900	1000
(HGT)	200	687	1006	1324	1644	FAF-MAPT	NA					

STRAIGHT-IN	CAT	A	B	C	D	E
CAT I	DA / (OCH)	2646' / (200')				
	ALS/NO ALS/ RVR ALS (m)	800 / 1200 / 700*				
CIRCLING	MDA / (OCH)	NA				
	VIS (m)	NA				

CHANGES: PROC. IDENT. MSA, DEC.