

**INSTRUMENT APPROACH  
CHART (IAC)**

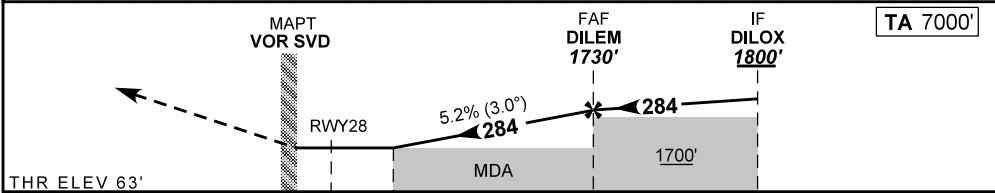
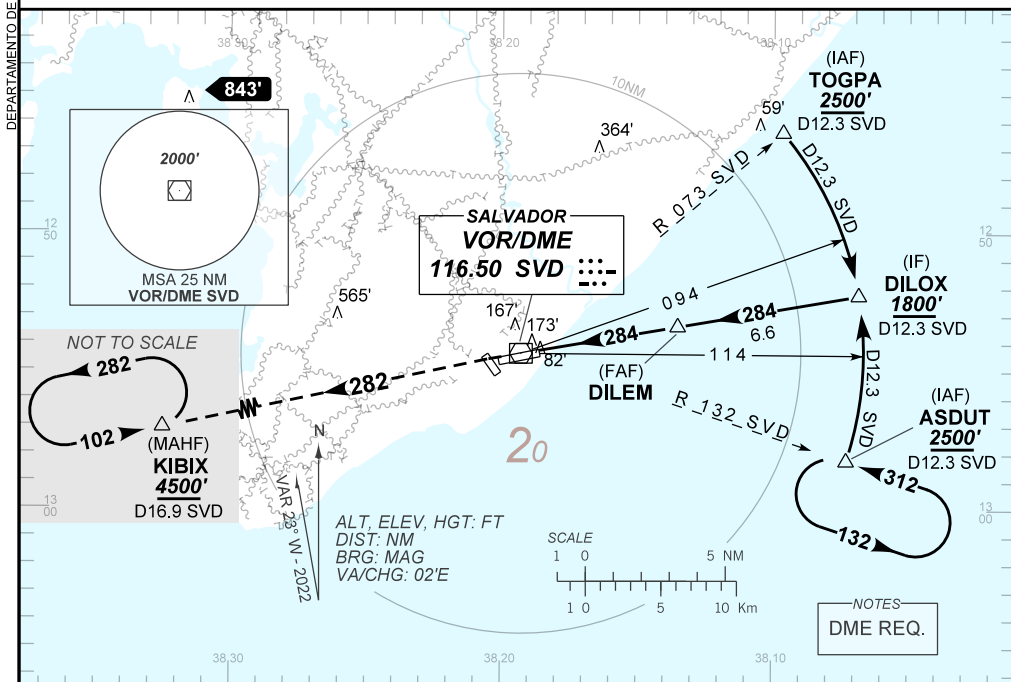
**SALVADOR / Deputado Luís Eduardo Magalhães, INTL (SBSV)**

**AD ELEV: 66'**

**VOR Z RWY 28**

D-ATIS <b>127.75</b>	APP SALVADOR <b>119.35 119.80 120.80 129.45</b>	TWR SALVADOR <b>118.30 118.60 118.95 121.10</b>	GNDC SALVADOR <b>121.90</b>
VOR SVD <b>116.50 MHz</b>	FINAL CRS <b>284°</b>	FAF: <b>1730'</b>	VOR MDA / (OCH): <b>500' / (440')</b>

APCH Perdida: Subir para **4500'**. Manter RDL **282** do VOR SVD até KIBIX para espera.  
Missed APCH: Climb to **4500'**. Maintain **282** RDL SVD VOR up to KIBIX for holding.



	0.0	1.2		5.1	11.7	TO THR 28 (NM)
	0.7	1.9		5.7	12.3	TO SVD (DME)

RWY28	1.2	2.0	3.0	4.0	DILEM	Ground Speed (KT)	090	110	130	150	170	190
ALT	500	750	1068	1387	1710	FPM	500	600	700	800	900	1050
(HGT)	440	687	1005	1324	1647	FAF-MAPT	NA					

STRAIGHT-IN	CAT	A	B	C	D	E
	MDA / (OCH)	500' / (440')				
VOR	ALS/NO ALS/ RVR ALS (m)	NIL / 1600 / NIL		NIL / 2000 / NIL		
CIRCLING	MDA / (OCH)	NA				
	VIS (m)					

CHANGES: LAYOUT, PROC.