

**INSTRUMENT APPROACH
CHART (IAC)**

PALMAS / Brigadeiro Lysias Rodrigues (SBPJ)

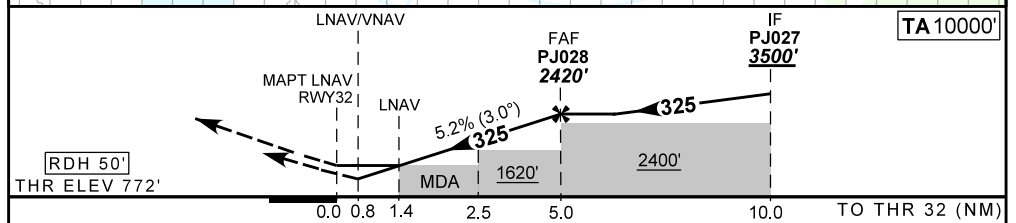
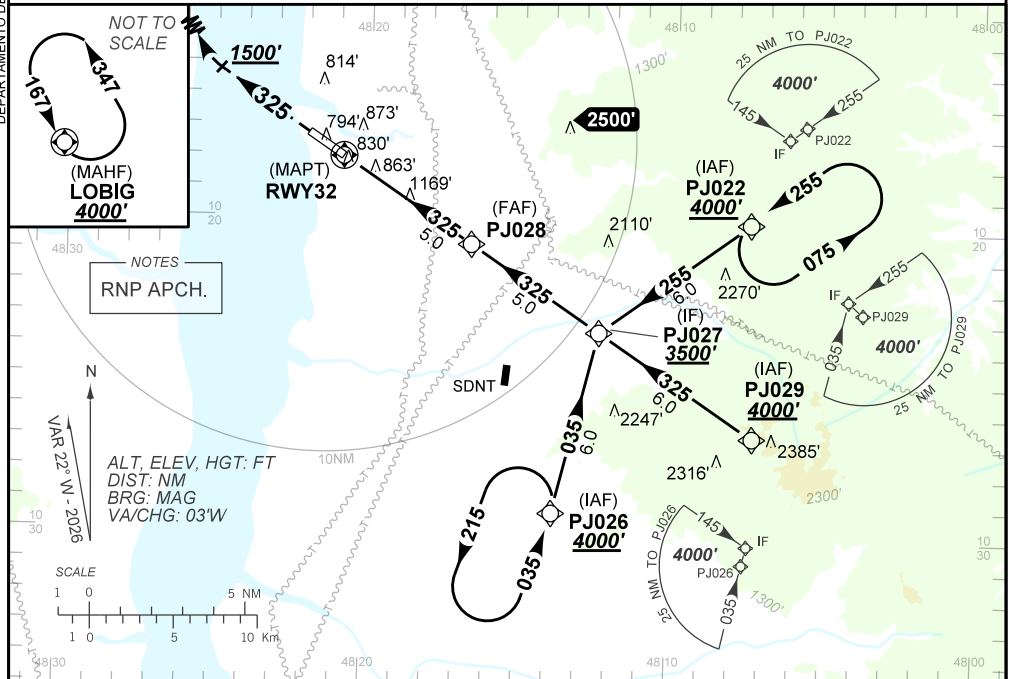
AD ELEV: 774'

RNP Y RWY 32

ATIS NIL	APP PALMAS 119.00	AFIS PALMAS 119.00	TWR PALMAS 118.00	GNDC NIL
TEMP LNAV/VNAV MIN 5°C / MAX 45°C	FINAL CRS 325°	FAF: 2420'	LNAV/VNAV DA / (OCH): 1082' / (310')	LNAV MDA / (OCH): 1260' / (490')

APCH Perdida: Subir para **4000'**. Manter proa **325** até **1500'**. Após, curvar à DIREITA direto LOBIG para espera.
Missed APCH: Climb to **4000'**. Maintain heading **325** until **1500'**. After, turn RIGHT direct LOBIG for holding.

DEPARTAMENTO DE CONTROLE DO ESPAÇO AÉREO



RWY32	1.4	2.5	3.0	4.0	PJ028		Ground Speed (KT)	090	110	130	150	170	190
ALT	1260	1620	1777	2096	2420		FPM	500	600	700	800	900	NA
(HGT)	490	848	1005	1324	1648		FAF-MAPT	NA					

STRAIGHT-IN	CAT	A	B	C	D	E
	DA / (OCH)	1082' / (310')				NA
LNAV/VNAV	ALS/NO ALS/ RVR ALS (m)	NIL / 1400 / NIL				NA
	MDA / (OCH)	1260' / (490')				
LNAV	ALS/NO ALS/ RVR ALS (m)	NIL / 1600 / NIL		NIL / 2300 / NIL		
	MDA / (OCH)	NA				
CIRCLING	MDA / (OCH)	NA				
	VIS (m)	NA				

CHANGES: LAYOUT, PROC. TA, VAR.