

**INSTRUMENT APPROACH
CHART (IAC)**

PIRASSUNUNGA / Campo Fontenelle, MIL (SBYS)

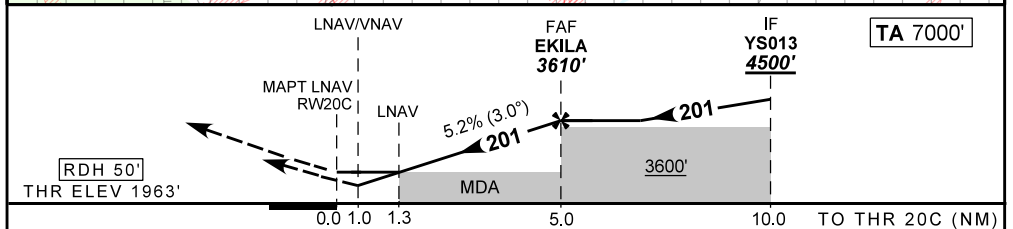
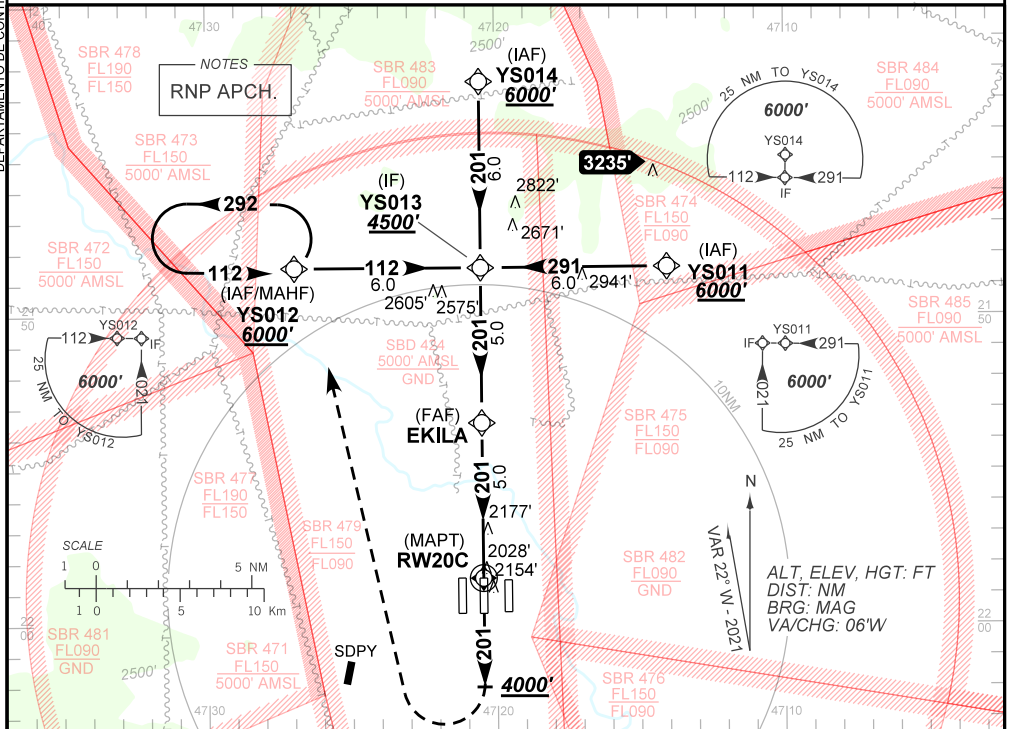
AD ELEV: 1976'

RNP Y RWY 20C

ATIS 127.70	APP ACADEMIA 120.10 122.40 122.80 124.90 135.45	TWR ACADEMIA 118.30	GNDC ACADEMIA 121.90
-----------------------	---	-------------------------------	--------------------------------

TEMP LNAV/VNAV MIN -10°C / MAX 50°C	FINAL CRS 201°	FAF: 3610'	LNAV/VNAV DA / (OCH): 2338' / (375')	LNAV MDA / (OCH): 2430' / (470')
---	--------------------------	----------------------	--	--

APCH Perdida: Subir para **6000'**. Manter rumo **201** até **4000'**. Após, curvar à DIREITA direto YS012 para espera.
Missed APCH: Climb to **6000'**. Maintain course **201** until **4000'**. After, turn RIGHT direct YS012 for holding.



RW20C	1.3	2.0	3.0	4.0	EKILA		Ground Speed (KT)	090	110	130	150	170	190
ALT (HGT)	2430	2650	2968	3287	3610		FPM	500	600	700	800	900	NA
	470	687	1005	1324	1647		FAF-MAPT	NA					

STRAIGHT-IN	CAT	A	B	C	D	E
	DA / (OCH)	2338' / (375')				NA
LNAV/VNAV	ALS/NO ALS/ RVR ALS (m)	NIL / 1700 / NIL				NA
	MDA / (OCH)	2430' / (470')				
LNAV	ALS/NO ALS/ RVR ALS (m)	NIL / 1700 / NIL		NIL / 2200 / NIL		
	MDA / (OCH)	NA				
CIRCLING	MDA / (OCH)	NA				
	VIS (m)	NA				