

INSTRUMENT APPROACH
CHART (IAC)

FOZ DO IGUAÇU / Cataratas, INTL (SBFI)

AD ELEV: 787'

RNAV (GNSS) RWY 33

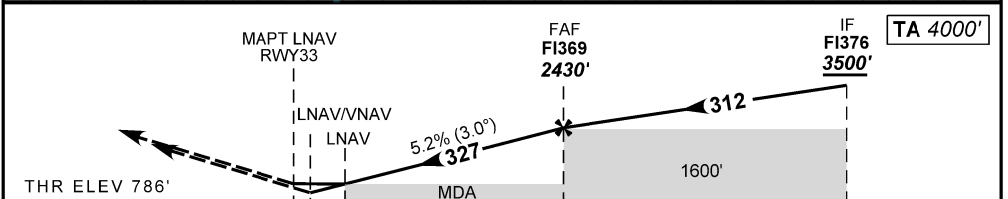
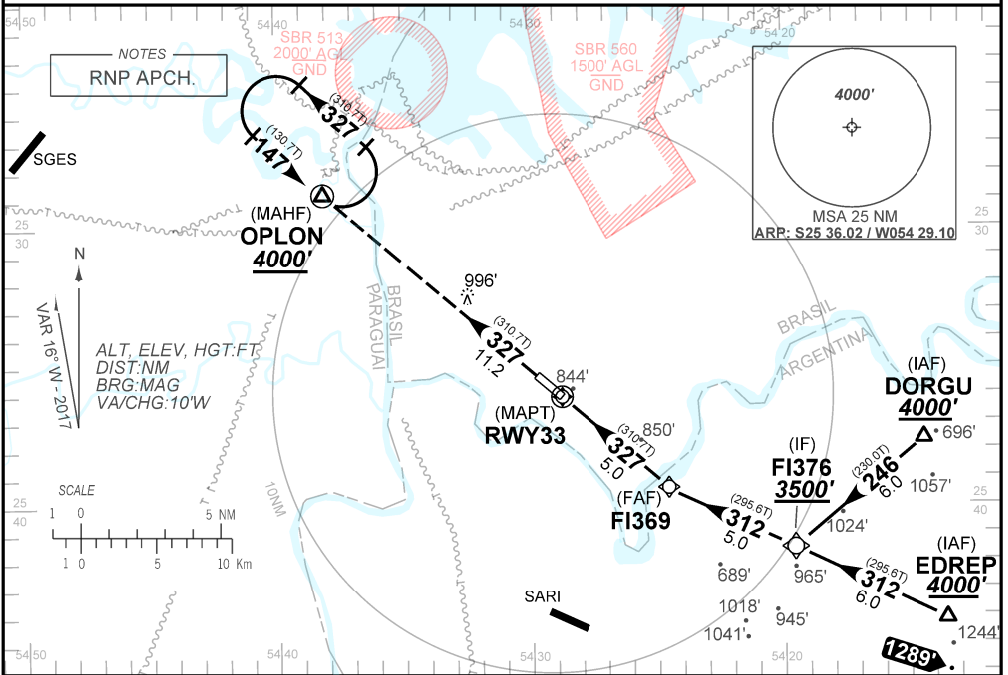
D-ATIS	APP FOZ 120.30 119.15		TWR FOZ 118.80	GNDC NIL
N/A	FINAL CRS 327°	FAF 2430'	LNAV/VNAV DA / (OCH): 1037' (260')	LNAV MDA / (OCH): 1130' (350')

APCH Perdida: Subir para 4000' no rumo 327 para espera em OPLON.

Missed APCH: Climb to 4000' on course 327 for holding over OPLON.

RMK: 1) Para sistemas BARO-VNAV não compensados, procedimento LNAV/VNAV não autorizado abaixo de -10°C.

1) For uncompensated systems BARO-VNAV, LNAV/VNAV procedure not authorized below -10°C.



RWY33	0.6	0.9	2.0	3.0	4.0	FI369	KT	090	110	130	150	170	190
ALT	1037	1130	1632	1899	2165	2431	FPM	500	600	700	800	900	NA
(HGT)	251	343	846	1112	1378	1644	FAF-MAPT 5NM	NA					

STRAIGHT-IN	CAT	A	B	C	D	E
LNAV/VNAV	DA / (OCH)	1037' / (260')				
	ALS/NO ALS / RVR ALS (m)	NIL / 1300 / NIL				
LNAV	MDA / (OCH)	1130' / (350')				
	ALS/NO ALS/RVR ALS (m)	NIL / 1600 / NIL				
CIRCLING	MDA / (OCH)	NA				
	VIS (m)	NA				

CHANGES: EAC, FREQ, MINM OPR, RWY.