

**INSTRUMENT APPROACH
CHART (IAC)**

SANTA MARIA / Santa Maria (SBSM)

AD ELEV: 289'

VOR RWY 29

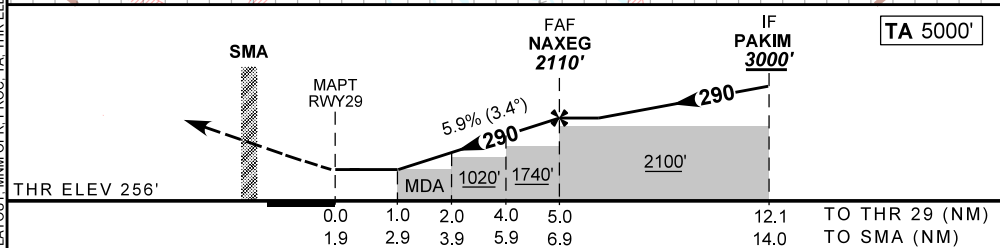
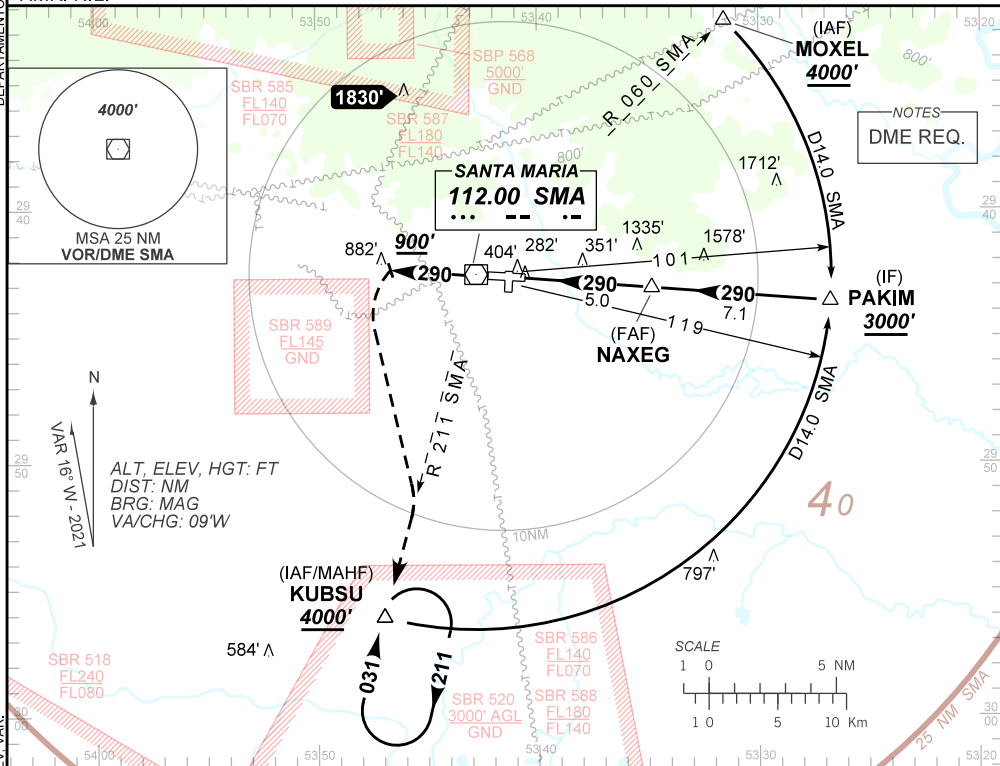
ATIS 127.75	APP SANTA MARIA 119.35 121.35	TWR SANTA MARIA 118.30 118.85 122.80(MIL)	AFIS SANTA MARIA 119.35 121.35 118.30	GNDC NIL
-----------------------	---	---	---	--------------------

VOR SMA 112.00 MHz	FINAL CRS 290°	FAF: 2110'	N/A	VOR MDA / (OCH): 650' / (400')
------------------------------	--------------------------	----------------------	-----	--

APCH Perdida: 1) Subir para **4000'**. Manter RDL **290** do VOR SMA até **900'**. Após, curvar à ESQUERDA para interceptar a RDL **211** do VOR SMA até KUBSU para espera. 2) IAS MAX 210KT.

Missed APCH: 1) Climb to **4000'**. Maintain **290** RDL SMA VOR until **900'**. After, turn LEFT to intercept **211** RDL SMA VOR until KUBSU for holding. 2) IAS MAX 210KT.

RMK: NIL.



RWY29	1.0	2.0	3.0	4.0	NAXEG	090	110	130	150	170	190	
ALT	650	1028	1389	1750	2110	FPM	600	700	800	900	1000	1100
(HGT)	400	772	1133	1494	1854	FAF-MAPT	NA					

STRAIGHT-IN	CAT		A	B	C	D	E
	MDA / (OCH)		650' / (400')			NIL / 1800 / NIL	
VOR	ALS/NO ALS/ RVR ALS (m)		NIL / 1600 / NIL			NIL / 1800 / NIL	

AIRAC AMDT 2107A1 15 JUL 21

SBSM_IAC_00M 1/1
IAC VOR RWY 29

DEPARTAMENTO DE CONTROLE DO ESPAÇO AEREO
CHANGES: EAC, FREQ, LAYOUT, MNM OPR, PROC, TA, THR ELEV, VAR.