

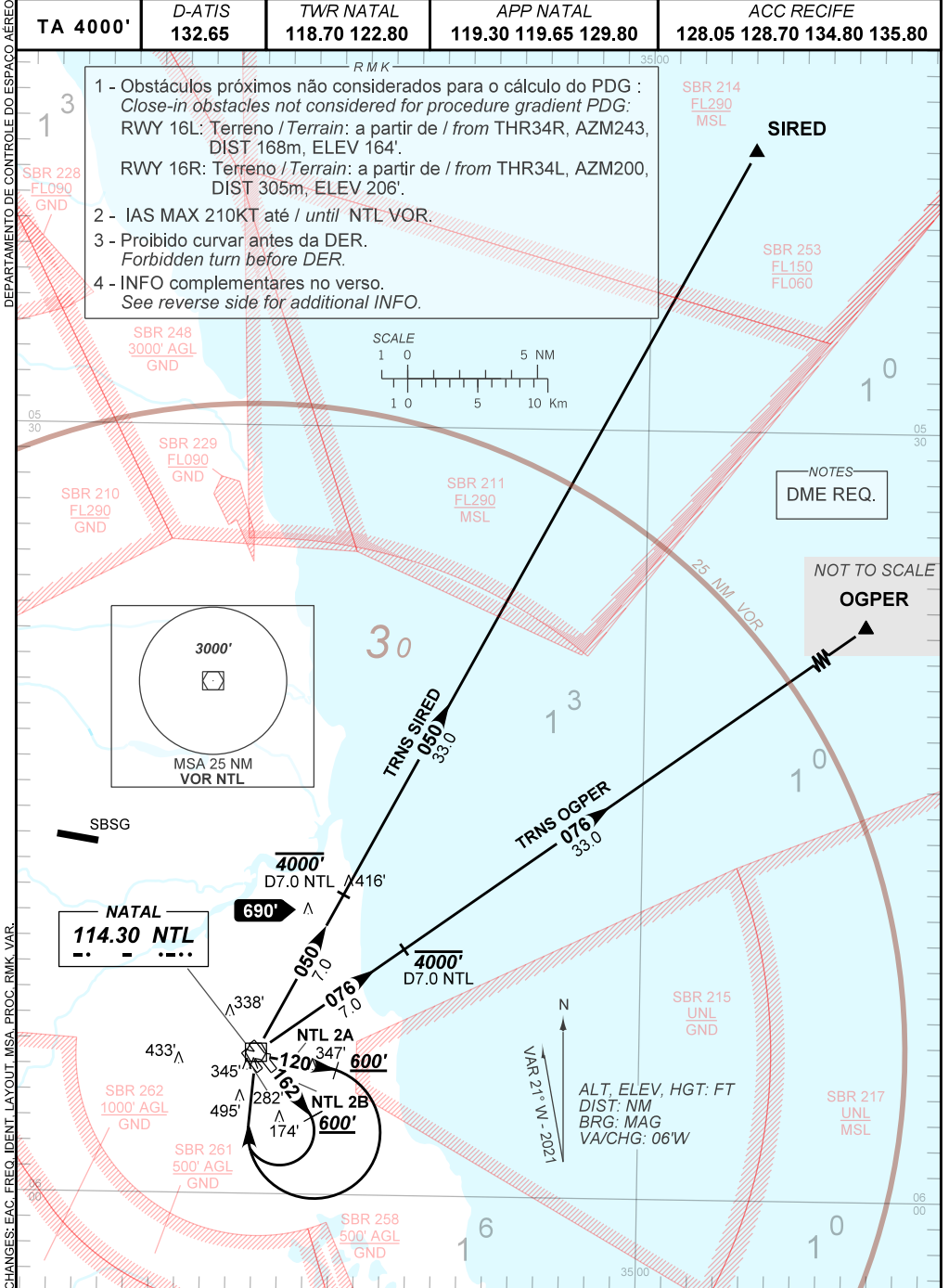
STANDARD DEPARTURE CHART  
INSTRUMENT (SID)

NATAL / Augusto Severo, MIL (SBNT)

RWY 12 / 16L / 16R

NTL 2A, 2B

AD ELEV: 171'



CHANGES: EAC, FREQ, IDENT, LAYOUT, MSA, PROC, RMIK, VAR.

DEPARTAMENTO DE CONTROLE DO ESPAÇO AÉREO

— R M K —

5 - Descrição textual / *Textual description:*

SID NTL 2A

RWY 12

Manter proa 120 até cruzar 600'. Então, curvar à DIREITA, direto VOR NTL, então:  
*Maintain heading 120 until passing 600'. Then, turn RIGHT, direct NTL VOR, after:*

TRNS SIREDE: Interceptar a RDL 050 NTL até SIREDE.

*TRNS SIREDE: Intercept 050 RDL NTL until SIREDE.*

TRNS OGPERR: Interceptar a RDL 076 NTL até OGPERR.

*TRNS OGPERR: Intercept 076 RDL NTL until OGPERR.*

SID NTL 2B

RWY 16L/16R

Manter proa 162 até cruzar 600'. Então, curvar à DIREITA, direto VOR NTL, então:  
*Maintain heading 162 until passing 600'. Then, turn RIGHT, direct NTL VOR, after:*

TRNS SIREDE: Interceptar a RDL 050 NTL até SIREDE.

*TRNS SIREDE: Intercept 050 RDL NTL until SIREDE.*

TRNS OGPERR: Interceptar a RDL 076 NTL até OGPERR.

*TRNS OGPERR: Intercept 076 RDL NTL until OGPERR.*