

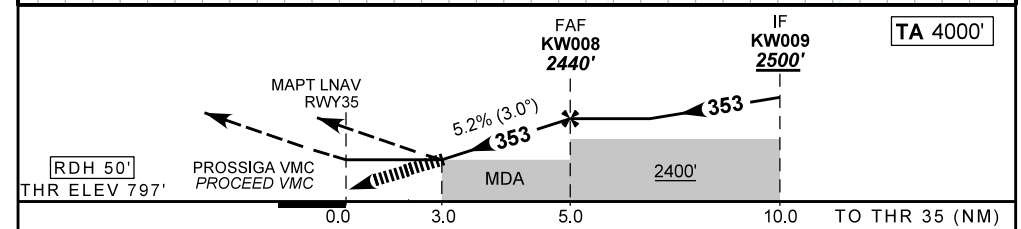
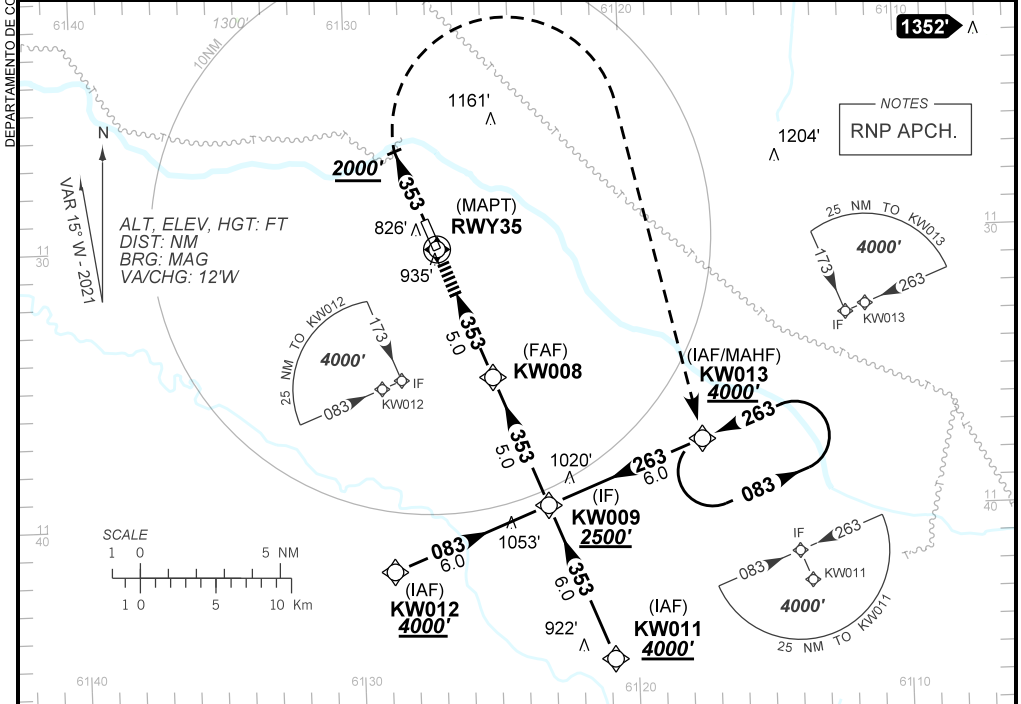
**INSTRUMENT APPROACH
CHART (IAC)**

CACOAL / Cacoal (SSKW)

AD ELEV: 817'

RNP RWY 35

ATIS NIL	APP NIL	AFIS CACOAL 131.10	GNDC NIL
TEMP LNAV/VNAV MIN -10°C / MAX 50°C	FINAL CRS 353°	FAF: 2440'	LNAV/VNAV DA / (OCH): 1797' / (1000')
APCH Perdida: Subir para 4000' . Manter rumo 353 até 2000' . Após, curvar à DIREITA direto KW013 para espera.		LNAV MDA / (OCH): 1800' / (1000')	
Missed APCH: Climb to 4000' . Maintain course 353 until 2000' . After, turn RIGHT direct to KW013 for holding.			



RWY35	3.0	4.0	KW008							Ground Speed (KT)	090	110	130	150	170	190
ALT	1800	2121	2440							FPM	500	600	700	800	900	NA
(HGT)	1000	1324	1643							FAF-MAPT	NIL					

STRAIGHT-IN	CAT	A	B	C	D	E
	DA / (OCH)	1797' / (1000')				
LNAV/VNAV	ALS/NO ALS/ RVR ALS (m)	NIL / 5000 / NIL				
	MDA / (OCH)	1800' / (1000')				
LNAV	ALS/NO ALS/ RVR ALS (m)	NIL / 5000 / NIL				
	MDA / (OCH)	NA				
CIRCLING	MDA / (OCH)	NA				
	VIS (m)	NA				

DEPARTAMENTO DE CONTROLE DO ESPAÇO AÉREO