

**INSTRUMENT APPROACH  
CHART (IAC)**

**CAMPO GRANDE / Campo Grande, INTL (SBCG)**

**VOR RWY 06**

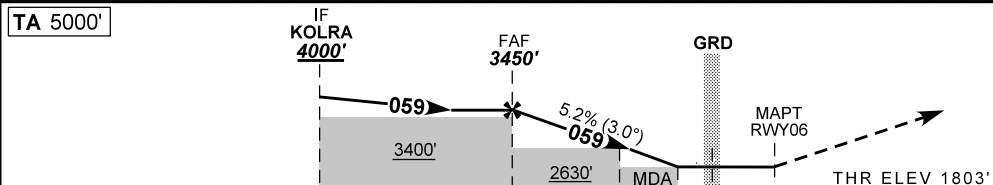
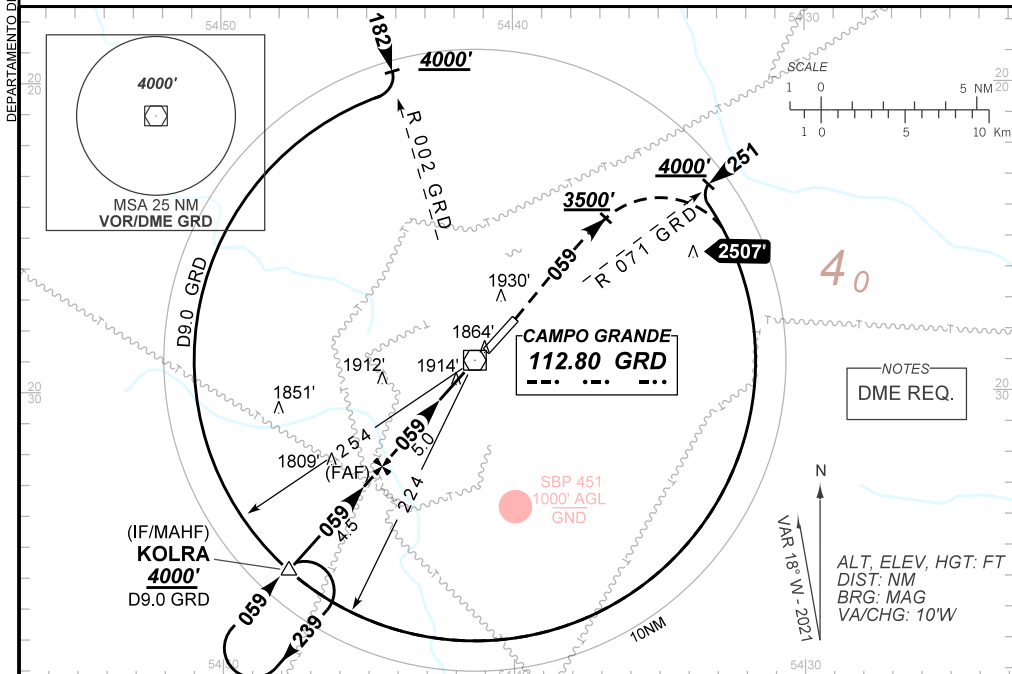
**AD ELEV: 1834'**

D-ATIS <b>127.60</b>	APP CAMPO GRANDE <b>119.35 119.65 120.20 121.00</b>	TWR CAMPO GRANDE <b>118.10</b>	GNDC CAMPO GRANDE <b>121.90</b>
-------------------------	--------------------------------------------------------	-----------------------------------	------------------------------------

VOR GRD <b>112.80 MHz</b>	FINAL CRS <b>059°</b>	FAF <b>3450'</b>	N/A	VOR MDA / (OCH): <b>2180' / (380')</b>
------------------------------	--------------------------	---------------------	-----	-------------------------------------------

APCH Perdida: Subir para **4000'**. Manter RDL **059** do VOR GRD até **3500'**. Então, curvar à DIREITA para interceptar o Arco DME de 9NM, para espera em KOLRA.

Missed APCH: Climb to **4000'**. Maintain **059** RDL GRD VOR until **3500'**. Then, turn RIGHT in order to intercept 9NM DME Arc, for holding over KOLRA.



TO THR 06 (NM)	9.5	5.0	2.5	1.0	0.5	0.0
TO GRD (DME)	9.0	4.5	2.0	0.5	0.0	0.5

FAF	4.0	3.0	2.5	2.0	1.0	RWY06	Ground Speed (KT)	090	110	130	150	170	190
3450	3127	2808	2640	2490	2180	ALT	FPM	500	600	700	800	900	NA
1647	1324	1005	837	687	380	(HGT)	FAF-MAPT	NA					

STRAIGHT-IN	CAT	A	B	C	D	E
	MDA / (OCH)	2180' / (380')				
VOR	ALS/NO ALS/ RVR ALS (m)	800 / 1600 / NIL			1000 / 1700 / NIL	
CIRCLING	MDA / (OCH)	NA				
	VIS (m)					

AIRAC AMDT 2109A1 09 SEP 21

SBCG\_IAC\_00T 1/1  
IAC VOR RWY 06

CHANGES: MISSED APCH.

DEPARTAMENTO DE CONTROLE DO ESPAÇO AEREO