

**INSTRUMENT APPROACH
CHART (IAC)**

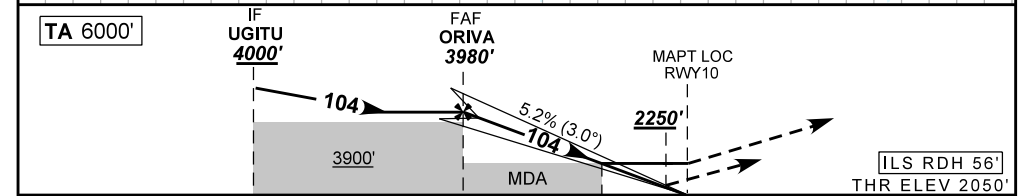
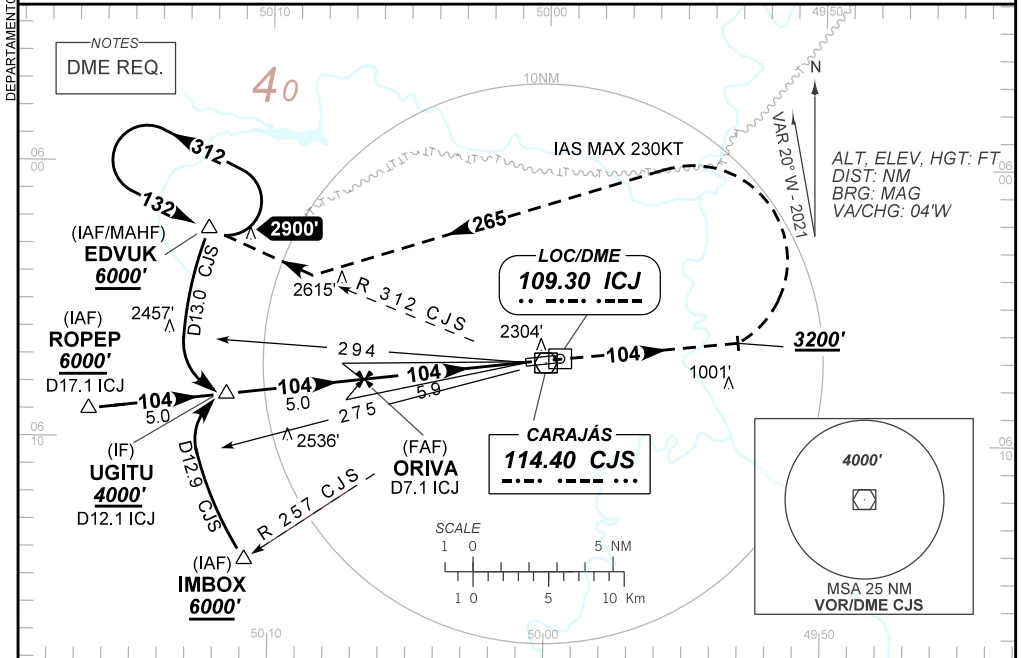
PARAUAPEBAS / Carajás (SBCJ)

AD ELEV: 2064'

ILS W or LOC W RWY 10

| | | | |
|---|--------------------------|--|--|
| ATIS NIL | APP NIL | AFIS CARAJÁS 131.70 | GNDC NIL |
| LOC ICJ 109.30 MHz | FINAL CRS 104° | FAF: 3980' | CAT I DA / (OCH): 2250' / (200') |
| APCH Perdida: Subir para 6000' . Manter rumo 104° até cruzar 3200' . Então, curvar à ESQUERDA proa 265° para interceptar RDL 312° do VOR CJS para espera em EDVUK. | | LOC ONLY MDA / (OCH): 2560' / (510') | |
| Missed APCH: Climb to 6000' . Maintain course 104° until passing 3200' . Then, turn LEFT on heading 265° to intercept 312° CJS RDL VOR for holding at EDVUK. | | | |

RMK: NIL.



| | | | | | |
|----------------|------|-----|-----|-----|-----|
| TO THR 10 (NM) | 10.9 | 5.9 | 1.4 | 0.5 | 0.0 |
| TO ICJ (DME) | 12.1 | 7.1 | 2.6 | 1.7 | 1.2 |

| | | | | | | | | | | | | | |
|-------|------|------|------|------|------|-------|-------------------|-----|-----|-----|-----|-----|-----|
| ORIVA | 5.0 | 4.0 | 3.0 | 1.4 | 0.5 | RWY10 | Ground Speed (KT) | 090 | 110 | 130 | 150 | 170 | 190 |
| 4000 | 3698 | 3380 | 3061 | 2560 | 2250 | ALT | FPM | 500 | 600 | 700 | 800 | 900 | NA |
| 1950 | 1648 | 1330 | 1011 | 510 | 200 | (HGT) | FAF-MAPT | NA | | | | | |

| | | | | | | |
|-------------|-------------------------|------------------|---|------------------|---|---|
| STRAIGHT-IN | CAT | A | B | C | D | E |
| | DA / (OCH) | 2250' / (200') | | | | |
| CAT I | ALS/NO ALS/ RVR ALS (m) | NIL / 1200 / NIL | | | | |
| | MDA / (OCH) | 2560' / (510') | | | | |
| LOC | ALS/NO ALS/ RVR ALS (m) | NIL / 1200 / NIL | | NIL / 2400 / NIL | | |
| | MDA / (OCH) | NA | | | | |
| CIRCLING | MDA / (OCH) | NA | | | | |
| | VIS (m) | NA | | | | |

CHANGES: IAS, LAYOUT, VAR

DEPARTAMENTO DE CONTROLE DO ESPAÇO AÉREO