

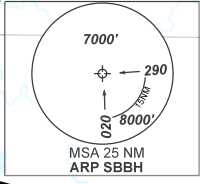
CARTA DE SAÍDA PADRÃO  
 POR INSTRUMENTOS (SID)  
 STANDARD DEPARTURE CHART  
 INSTRUMENT (SID)

BELO HORIZONTE / Pampulha - Carlos Drummond de Andrade (SBBH)

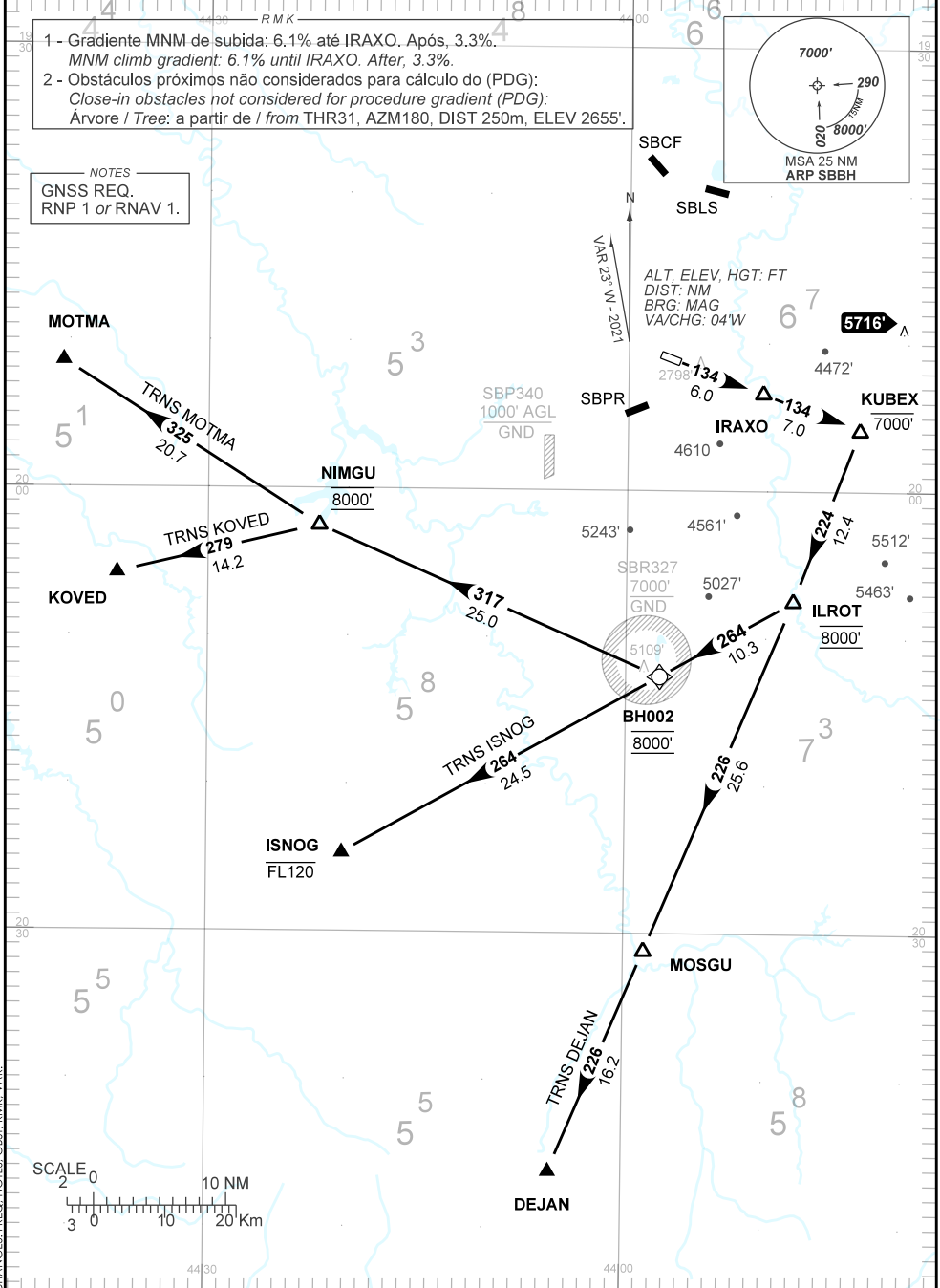
**RWY 13**  
**RNAV ILROT 1A**

TA 8000'	TWR BELO HORIZONTE 118.00	APP BELO HORIZONTE 119.10 119.30 119.65 120.20 128.55 129.10 129.40	ACC BRASÍLIA 124.80 135.55	ACC CURITIBA 124.00 125.35 128.25
----------	------------------------------	---------------------------------------------------------------------------	-------------------------------	--------------------------------------

- 1 - Gradiente MNM de subida: 6,1% até IRAXO. Após, 3,3%.  
 MNM climb gradient: 6.1% until IRAXO. After, 3.3%.
- 2 - Obstáculos próximos não considerados para cálculo do (PDG):  
 Close-in obstacles not considered for procedure gradient (PDG):  
 Árvore / Tree: a partir de / from THR31, AZM180, DIST 250m, ELEV 2655'.



NOTES  
 GNSS REQ.  
 RNP 1 or RNAV 1.



CHANGES: FREQ, NOTES, OBST, RMK, VAR.