

**INSTRUMENT APPROACH  
CHART (IAC)**

**RECIFE / Guararapes - Gilberto Freyre, INTL (SBRF)**

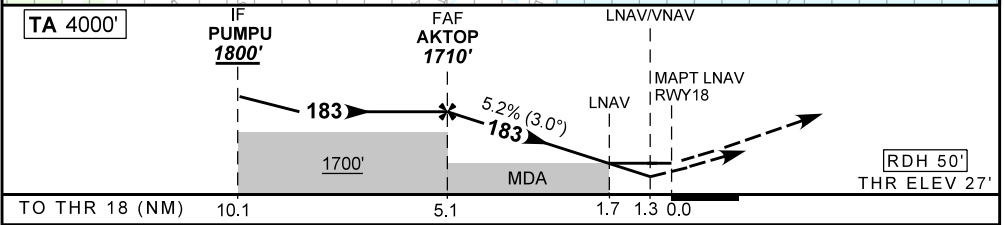
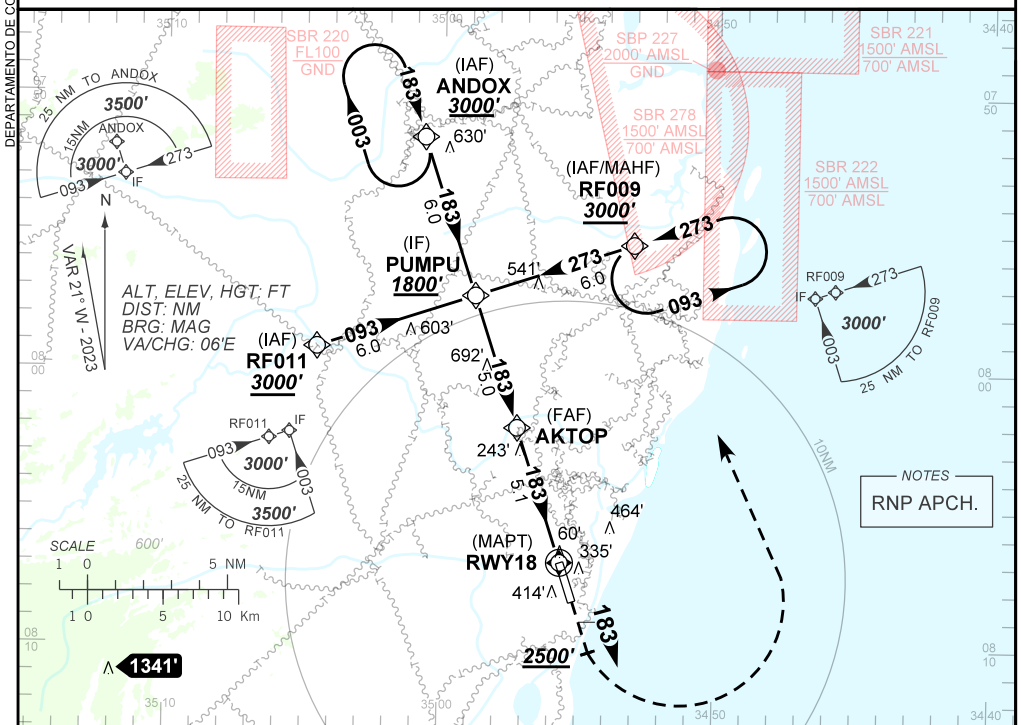
**AD ELEV: 33'**

**RNP RWY 18**

D-ATIS <b>127.65</b>	APP RECIFE <b>120.40 129.20</b>	TWR RECIFE <b>118.35 125.25</b>	GNDC RECIFE <b>121.85</b>
TEMP LNAV/VNAV <b>MIN 10°C / MAX 48°C</b>	FINAL CRS <b>183°</b>	FAF: <b>1710'</b>	LNAV/VNAV <b>DA / (OCH): 496' / (469')</b>
		MDA / (OCH): <b>600' / (580')</b>	

APCH Perdida: Subir para **3000'**. Manter proa **183** até **2500'**. Após, curvar à ESQUERDA direto RF009 para espera.

Missed APCH: Climb to **3000'**. Maintain heading **183** until **2500'**. After, turn LEFT direct RF009 for holding.



	AKTOP	4.0	3.0	2.0	1.7	RWY 18	Ground Speed (KT)	090	110	130	150	170	190
	1710	1351	1032	714	600	ALT	FPM	500	600	700	800	900	NA
	1683	1324	1005	687	580	(HGT)	FAF-MAPT	NIL					

STRAIGHT-IN	CAT	A	B	C	D	E
	LNAV/VNAV	DA / (OCH) 496' / (469')				NA
LNAV	ALS/NO ALS/ RVR ALS (m)		NIL / 2200 / NIL			
	MDA / (OCH) 600' / (580')		NIL / 2200 / NIL			NIL / 2600 / NIL
CIRCLING	MDA / (OCH)		NA			
	VIS (m)					