

**INSTRUMENT APPROACH
CHART (IAC)**

ARACAJU / Santa Maria, INTL (SBAR)

AD ELEV: 23'

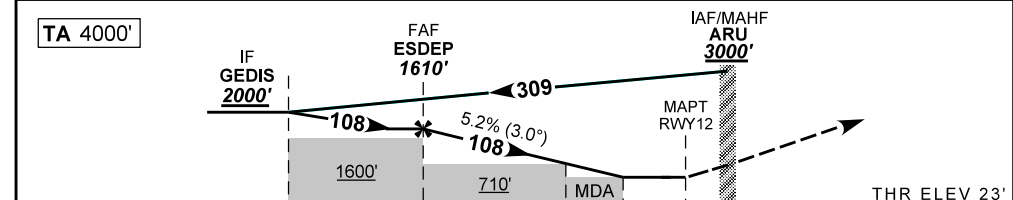
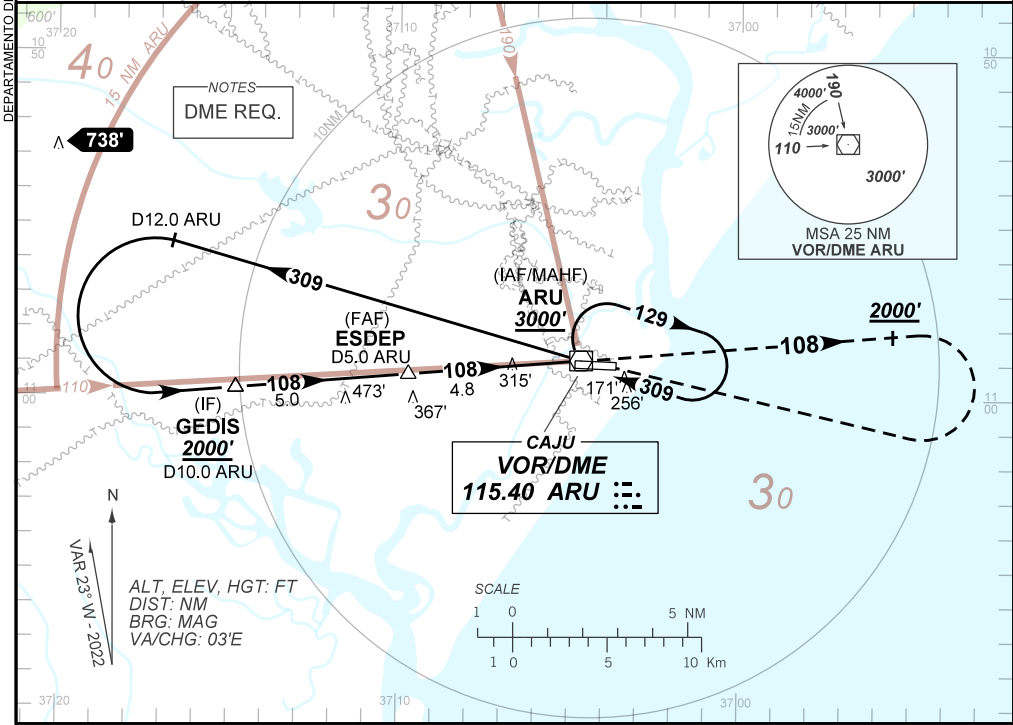
VOR W RWY 12

ATIS NIL	APP ARACAJU 120.30 129.25	TWR ARACAJU 118180 118.80	GNDC NIL
-------------	------------------------------	------------------------------	-------------

VOR ARU 115.40 MHz	FINAL CRS 108°	FAF: 1610'	N/A	VOR MDA / (OCH): 570' / (550')
-----------------------	-------------------	---------------	-----	-----------------------------------

APCH Perdida: Subir para **3000'**. Manter RDL **108** do VOR ARU até **2000'**. Após, curvar à DIREITA direto ARU para espera.

Missed APCH: Climb to **3000'**. Maintain **108** RDL ARU VOR until **2000'**. After, turn RIGHT direct ARU for holding.



TO THR 12 (NM)	9.8	4.8	2.0	1.6	0.0	THR ELEV 23'
TO ARU (DME)	10.0	5.0	2.2	1.8	0.2	

	ESDEP	4.0	3.0	2.0	1.6	RWY12	Ground Speed (KT)	090	110	130	150	170	190
		1610	1347	1028	710	570	FPM	500	600	700	800	900	NA
		1587	1324	1005	687	550	ALT (HGT)	FAF-MAPT	NA				

STRAIGHT-IN	CAT	A	B	C	D	E
	MDA / (OCH)	570' / (550')				NA
VOR	ALS/NO ALS/ RVR ALS (m)	NIL / 1600 / NIL		NIL / 2500 / NIL		NA
	MDA / (OCH)	NA				
CIRCLING	VIS (m)	NA				

AIRAC AMDT 2404A1 18 APR 24

SBAR_IAC_00D 1/1
IAC VOR W RWY 12

CHANGES: FREQ.