

**INSTRUMENT APPROACH
CHART (IAC)**

FORTALEZA / Pinto Martins, INTL (SBFZ)

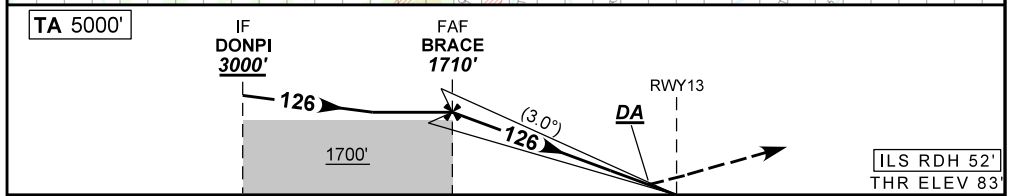
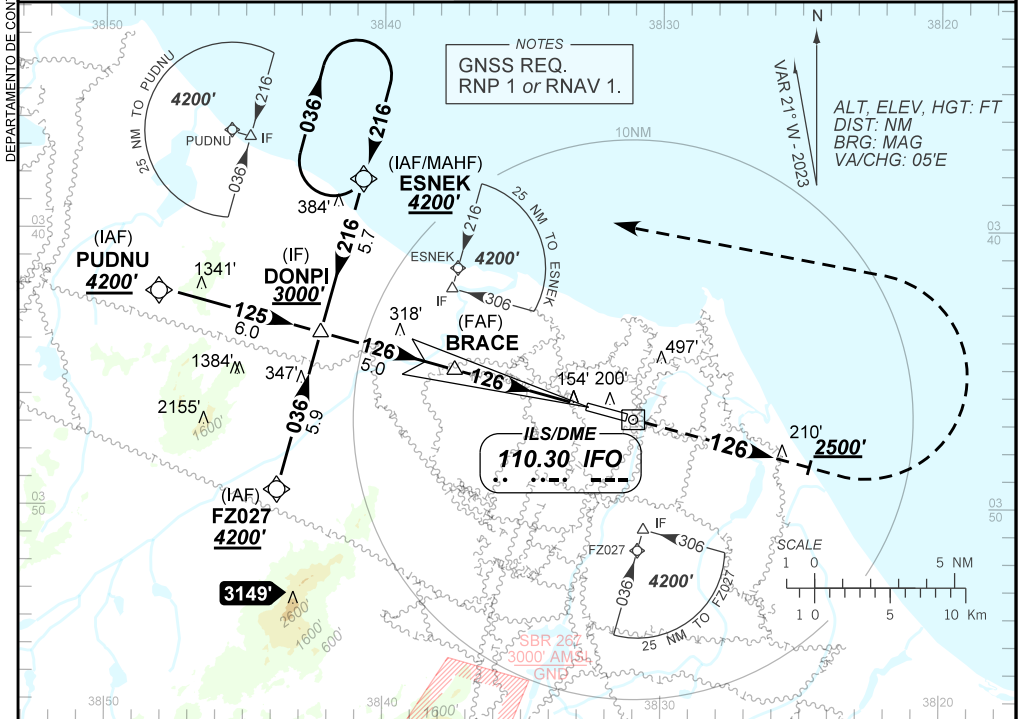
AD ELEV: 83'

ILS X RWY 13

D-ATIS 127.70	APP FORTALEZA 120.50 133.00 134.55		TWR FORTALEZA 129.00	GNDC FORTALEZA 121.95
ILS/DME IFO 110.30 MHz	FINAL CRS 126°	FAF: 1710'	CAT I DA / (OCH): REFER TO MNM	N/A

APCH Perdida: Subir para **4200'**. Manter proa **126** até **2500'**. Após, curvar à ESQUERDA direto ESNEK para espera.

Missed APCH: Climb to **4200'**. Maintain heading **126** until **2500'**. After, turn LEFT direct ESNEK for holding.



TO THR 13 (NM)	9.9	4.9	0.0
TO IFO (DME)	10.1	5.1	0.2

NIL	RWY 13	Ground Speed (KT)	090	110	130	150	170	190
NIL	ALT	FPM	NIL					
NIL	(HGT)	FAF-MAPT	NA					

STRAIGHT-IN	CAT	A	B	C	D	E
CAT I	DA / (OCH)	283' / (200')				335' / (252')
	ALS/NO ALS/ RVR (m)	NIL / 1200 / NIL				NIL / 1300 / NIL
CIRCLING	MDA / (OCH)	NA				
	VIS (m)	NA				

CHANGES: EAC. LAYOUT.