

**INSTRUMENT APPROACH
CHART (IAC)**

AMAJARI / Auaris (SWBV)

RNP RWY 31

(CAT A, B)

AD ELEV: 2492'

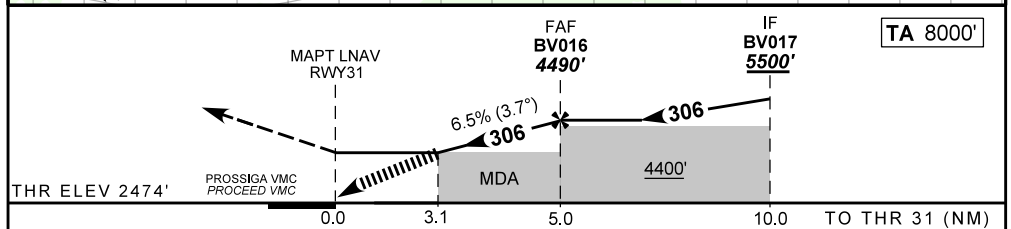
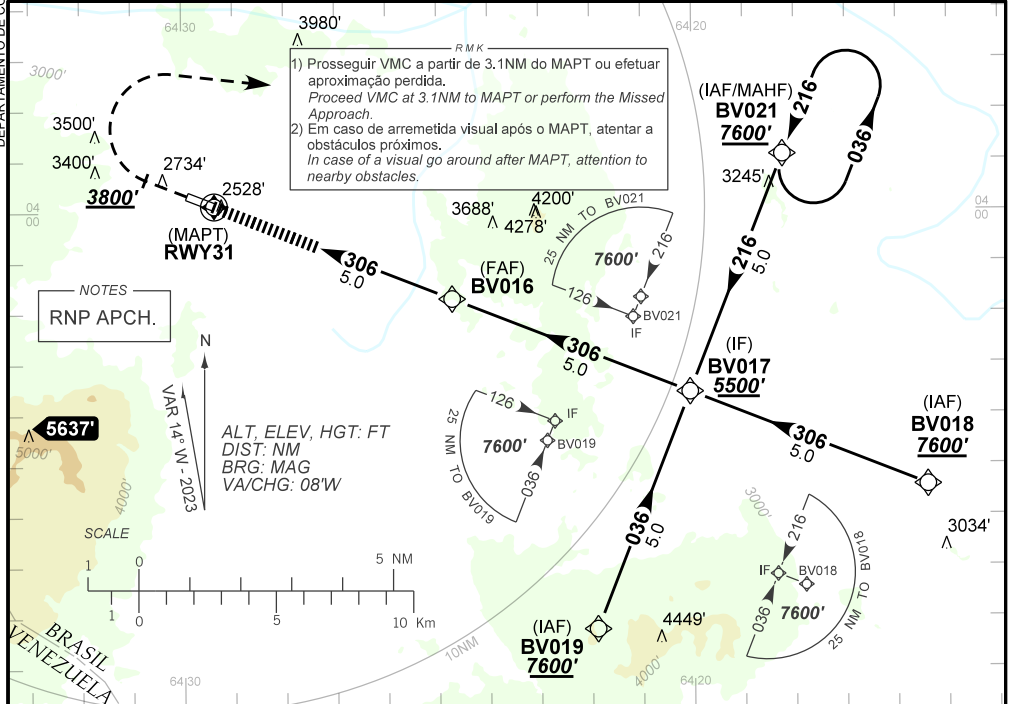
DEPARTAMENTO DE CONTROLE DO ESPAÇO AÉREO

ATIS NIL	ERAA NIL	APP NIL	TWR NIL	GNDC NIL
--------------------	--------------------	-------------------	-------------------	--------------------

N/A	FINAL CRS 306°	FAF: 4490'	N/A	LNAV MDA / (OCH): 3730' / (1260')
------------	--------------------------	----------------------	------------	---

APCH Perdida: Subir para **7600'**. Manter proa **306** até **3800'**. Após, curvar à DIREITA direto BV021 para espera.

Missed APCH: Climb to **7600'**. Maintain heading **306** until **3800'**. After, turn RIGHT direct BV021 for holding.



RWY31	3.1	4.0	BV016						
ALT	3730	4096	4490						
(HGT)	1260	1622	2016						
FAF-MAPT									NIL

STRAIGHT-IN	CAT	A	B	C	D	E
	DA / (OCH)	NA				
LNAV/VNAV	ALS/NO ALS/ RVR ALS (m)	NA				
	MDA / (OCH)	3730' / (1260')				
LNAV	ALS/NO ALS/ RVR ALS (m)	NIL / 5000 / NIL				
	MDA / (OCH)	NA				
CIRCLING	VIS (m)	NA				

CHANGES: NEW CHART.