

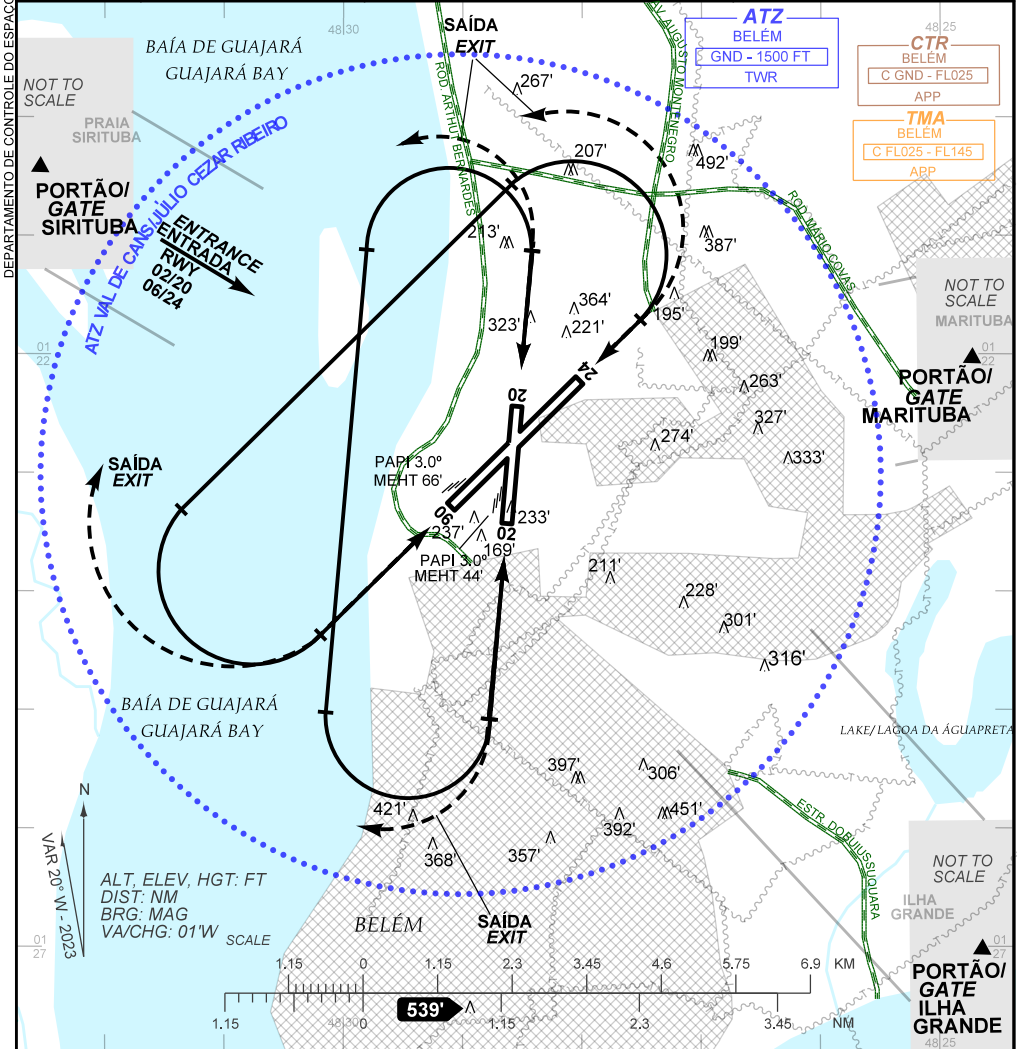
**VISUAL APPROACH CHART (VAC)**

**BELÉM / Val de Cans - Júlio Cezar Ribeiro, INTL (SBBE)**

**AD ELEV: 56'**

**RWY 02/20 - 06/24**

<b>D-ATIS</b> 127.60	<b>APP BELÉM</b> 119.05 119.50	<b>TWR BELÉM</b> 118.70	<b>GNDC BELÉM</b> 121.90
-------------------------	-----------------------------------	----------------------------	-----------------------------



- RMK:**
- ALTITUDES MÍNIMAS NO CIRCUITO DE TRÁFEGO / MINIMUM ALTITUDES IN TRAFFIC CIRCUIT:
    - AERONAVES / AIRPLANES / ACFT:
      - CAT A, B: 1100 FT
      - CAT C, SETORES / SECTORS SE, W: 1100'
      - CAT C, SETOR / SECTOR NW: 1200'
      - CAT D: 1600'
    - HELICÓPTEROS / HELICOPTERS:
      - CAT H: 700'
  - OBS PRESENÇA DE URUBUS NAS VCY DO AD, PRINCIPALMENTE NOS SECT DE APCH E TKOF. OBS PRESENCE OF VULTURES IN THE VCY OF AD, MAINLY IN APCH AND TKOF SECTORS.
  - OBSERVAR PUBLICAÇÕES SOBRE CIRCULAÇÃO AÉREA VISUAL NA TERMINAL BELÉM. SEE PUBLICATIONS ABOUT VISUAL FLIGHTS IN BELÉM TERMINAL AREA.
  - INFO COMPLEMENTARES NO VERSO. / SEE REVERSE SIDE FOR ADDITIONAL INFORMATION.

CHANGES: GRID, RMK

DEPARTAMENTO DE CONTROLE DO ESPAÇO AEREO

— RMK —

5 - A TÍTULO INFORMATIVO AS COORDENADAS GEOGRÁFICAS DOS PONTOS DE NOTIFICAÇÃO SÃO INCLUIDAS:  
*FOR INFORMATION PURPOSE, THE GEOGRAFIC COORDINATES OF THE REPORTING POINTS ARE INCLUDED:*

5.1 ILHA GRANDE: 01 28 21 S 048 23 24 W

5.2 MARITUBA: 01 21 09 S 048 20 28.80 W

5.3 SIRITUBA: 01 18 18 S 048 36 01.80 W

CHANGES: GRID, RMK