

**INSTRUMENT APPROACH
CHART (IAC)**

CANOAS / Campo Nossa Senhora de Fátima, MIL (SBCO)

AD ELEV: 26'

VOR Y RWY 13

ATIS NIL	APP PALEGRE 119.00 120.10 120.55 128.90			TWR CANOAS 118.50 122.80 (MIL)	GNDC CANOAS 121.70
-------------	--	--	--	-----------------------------------	-----------------------

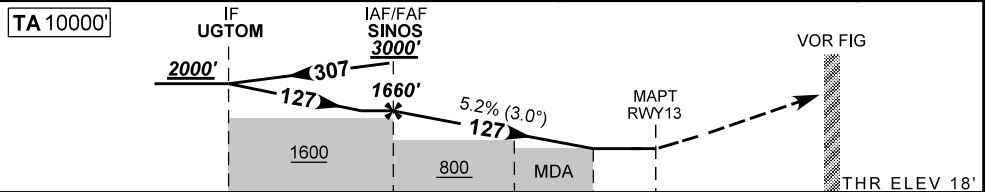
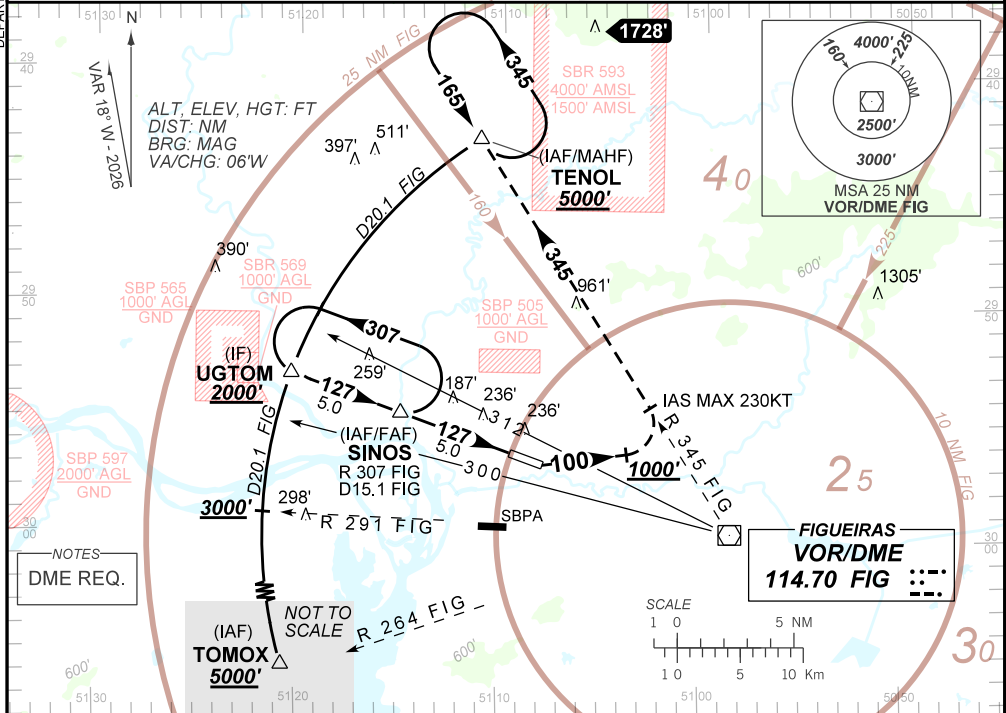
VOR FIG 114.70 MHz	FINAL CRS 127°	FAF 1660'	N/A	VOR MDA / (OCH): 490' / (480')
-----------------------	-------------------	--------------	-----	-----------------------------------

APCH Perdida: Subir para **5000'**. Manter proa **100** até **1000'**. Após, curvar à **ESQUERDA** para interceptar a RDL **344** do VOR FIG até **TENOL** para espera.

Missed APCH: Climb to **5000'**. Maintain heading **100** until **1000'**. After, turn **LEFT** to intercept **344** RDL FIG VOR until **TENOL** for holding.

RMK: ACFT iniciando o procedimento a partir do arco DME não realizarão espera em SINOS, exceto se determinado pelo APP-PA.

ACFT starting the procedure from the DME arc will not perform hold at SINOS, unless determined by APP-PA.



TO THR 13 (NM)	10.0	5.0	2.3	1.4	0.0
TO FIG (DME)	20.1	15.1	12.4	11.5	10.1

SINOS	4.0	3.0	2.3	1.4	RWY13	Ground Speed (KT)	090	110	130	150	170	190
1660	1342	1023	801	490	ALT	FPM	500	600	700	800	900	1000
1642	1324	1005	783	480	(HGT)	FAF-MAPT	NA					

STRAIGHT-IN	CAT	A	B	C	D	E
VOR	MDA / (OCH)	490' / (480')				
	ALS/NO ALS/ RVR ALT (m)	800 / 1600 / NIL			1500 / 2200 / NIL	

DEPARTAMENTO DE CONTROLE DO ESPAÇO AEREO

CHANGES: DA, MINM OPR, PROC, OBS, TA, VAR