

**INSTRUMENT APPROACH
CHART (IAC)**

PETROLINA / Senador Nilo Coelho (SBPL)

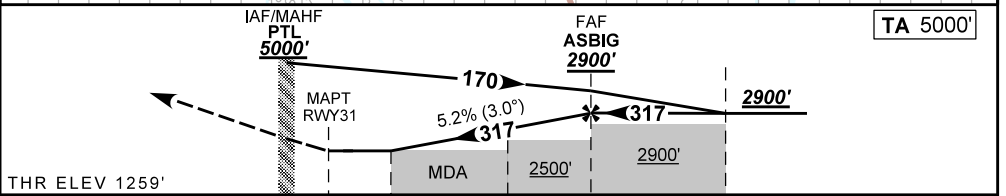
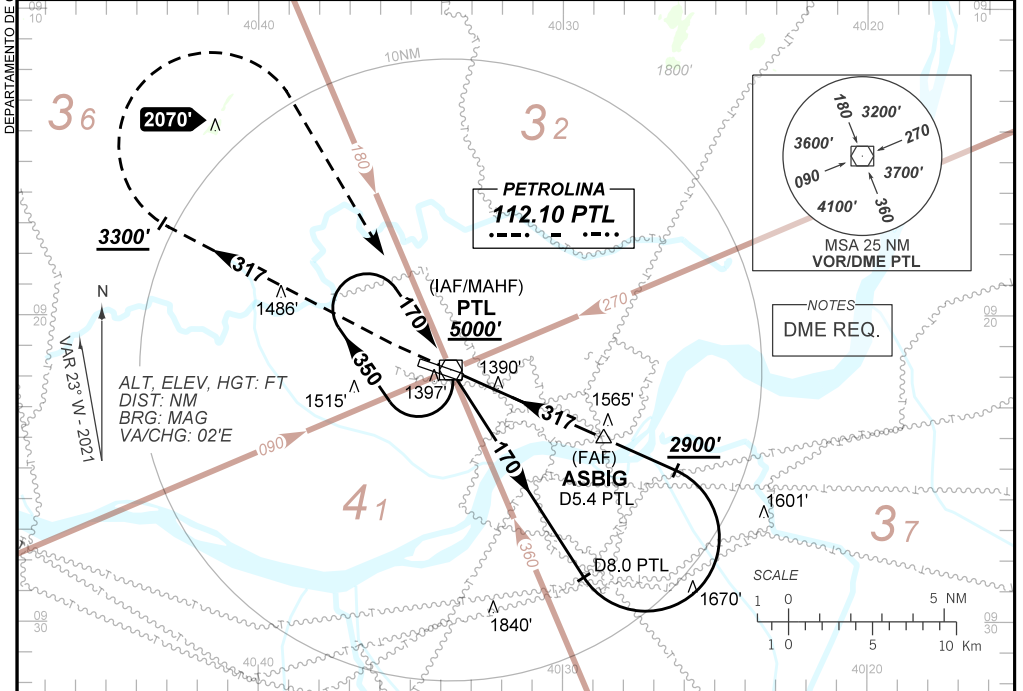
AD ELEV: 1263'

VOR RWY 31

ATIS NIL	APP NIL	AFIS PETROLINA 125.70	GNDC NIL
VOR PTL 112.10 MHz	FINAL CRS 317°	FAF: 2900'	N/A
		VOR MDA / (OCH): 1640' / (380')	

APCH Perdida: Subir para **5000'**. Manter RDL **317'** do VOR PTL até **3300'**. Após, curvar à DIREITA direto VOR PTL para espera.

Missed APCH: Climb to **5000'**. Maintain **317'** RDL PTL VOR until **3300'**. After, turn **RIGHT** direct to PTL VOR for holding.



THR ELEV 1259'	0.0	1.0	3.9	4.9	7.5	TO THR 31 (NM)
	0.5	1.5	4.4	5.4	8.0	TO PTL (DME)

RWY31	1.0	2.0	3.0	3.9	ASBIG		Ground Speed (KT)	090	110	130	150	170	190
ALT	1640	1946	2264	2564	2900		FPM	500	600	700	800	900	NA
(HGT)	380	687	1005	1305	1610		FAF-MAPT	NA					

STRAIGHT-IN	CAT	A	B	C	D	E
	MDA / (OCH)	1640' / (380')				
VOR	ALS/NO ALS/ RVR ALS (m)	NIL / 1600 / NIL		NIL / 1700 / NIL		
		NA				
CIRCLING	MDA / (OCH)	NA				
	VIS (m)	NA				