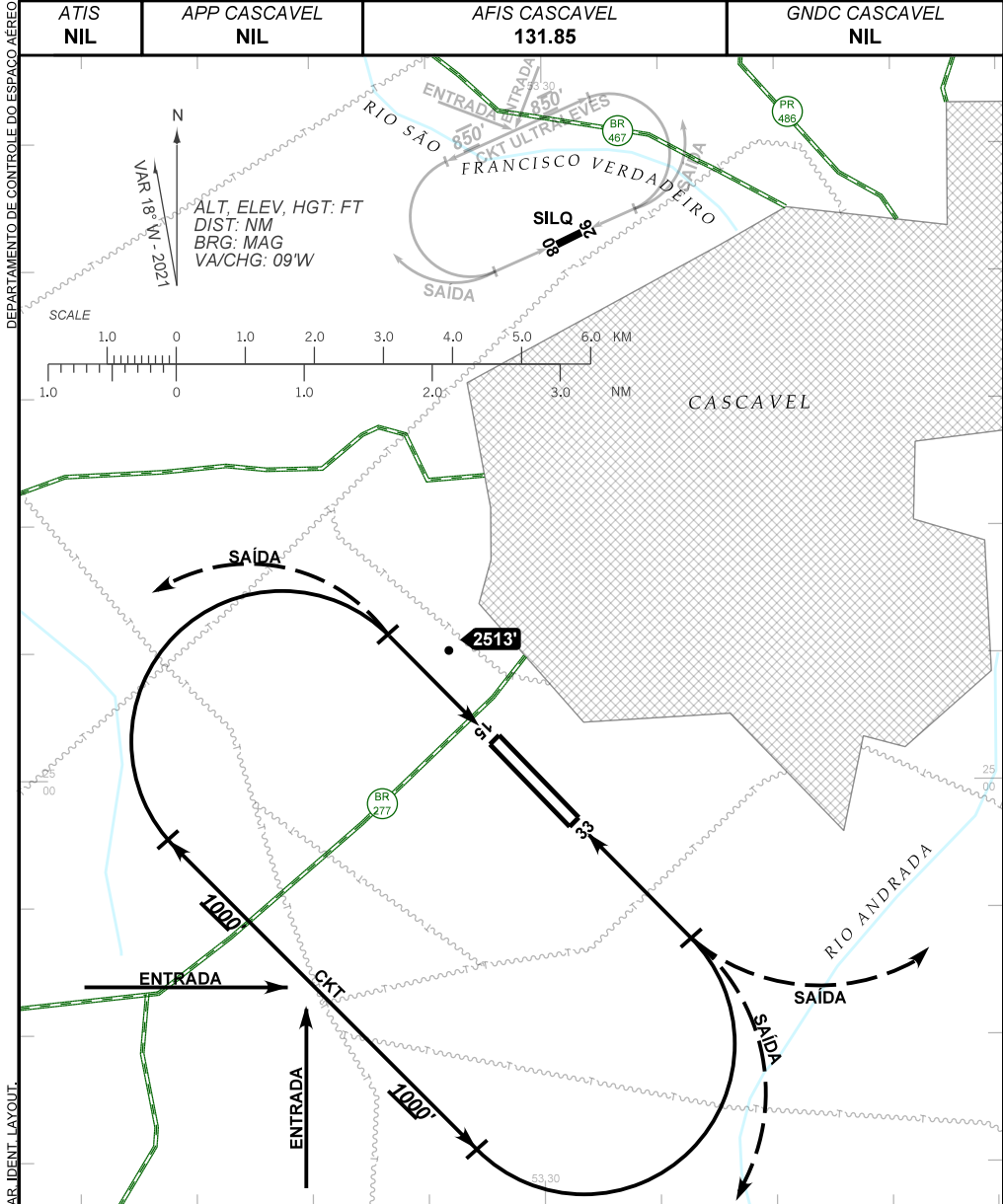


VISUAL APPROACH CHART  
(VAC)

CASCADEL / Coronel Adalberto Mendes da Silva (SBCA)

AD ELEV: 2481'

RWY 15 / 33



**RMK:**

- 1 - CIRCUITO DE TRÁFEGO SBCA: AUTORIZADO SOMENTE PELO SETOR SUDOESTE DO AERÓDROMO /  
SBCA TRAFFIC CIRCUIT: AUTHORIZATION ONLY BY THE SOUTHWEST SECTOR OF THE AERODROME.
- 2 - INFORMAÇÕES COMPLEMENTARES NO VERSO.  
SEE REVERSE SIDE FOR ADDITIONAL INFORMATION.

DEPARTAMENTO DE CONTROLE DO ESPAÇO AÉREO

— R M K —

2 - CIRCUITO DE TRÁFEGO SILQ: AUTORIZADO SOMENTE PELO SETOR NORTE DO AERÓDROMO.  
*SILQ TRAFFIC CIRCUIT: AUTHORIZATION ONLY BY THE NORTH SECTOR OF THE AERODROME.*

3 - SILQ: DEP RWY26 E ARR RWY08 SOMENTE EM COORDENAÇÃO COM A RÁDIO CASCADEL  
QUANDO OPR IFR EM SBCA.

*SILQ: DEP RWY26 AND ARR RWY08 ONLY IN COORDINATION WITH CASCADEL RADIO WHEN  
IFR OPR AT SBCA.*

CHANGES: AD ELEV, DECVAR, IDENT, LAYOUT.