

**INSTRUMENT APPROACH  
CHART (IAC)**

**CACOAL / Cacoal (SSKW)**

**AD ELEV: 817'**

**RNP RWY 17**

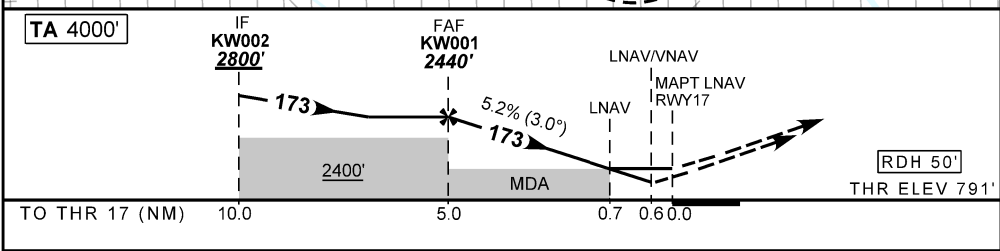
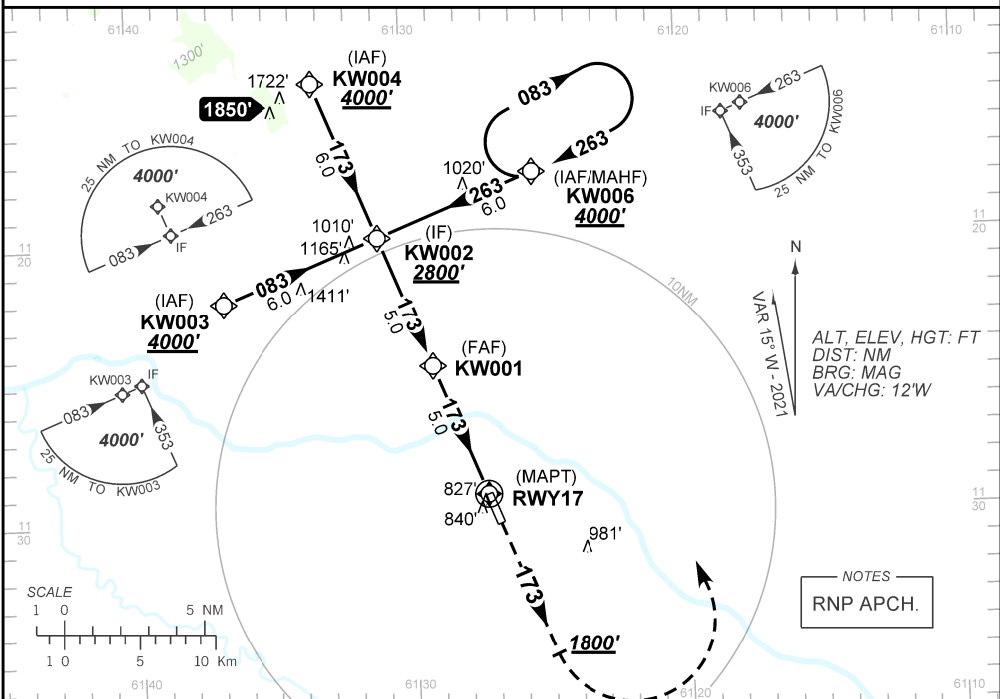
ATIS <b>NIL</b>	APP <b>NIL</b>	AFIS CACOAL <b>131.10</b>	GNDC <b>NIL</b>
--------------------	-------------------	------------------------------	--------------------

TEMP LNAV/VNAV <b>MIN -20°C / MAX 50°C</b>	FINAL CRS <b>173°</b>	FAF: <b>2440'</b>	LNAV/VNAV DA / (OCH): <b>1041' / (250')</b>	LNAV MDA / (OCH): <b>1070' / (280')</b>
---	--------------------------	----------------------	--	--

APCH Perdida: Subir para **4000'**. Manter rumo **173** até **1800'**. Após, curvar à ESQUERDA direto KW006 para espera.

Missed APCH: Climb to **4000'**. Maintain course **173** until **1800'**. After, turn LEFT direct to KW006 for holding.

DEPARTAMENTO DE CONTROLE DO ESPAÇO AÉREO



KW001	4.0	3.0	2.0	1.0	0.7	RWY 17	Ground Speed (KT)	090	110	130	150	170	190	
	2440	2115	1796	1478	1159	1070		ALT	500	600	700	800	900	NA
	1649	1324	1005	687	368	280	(HGT)	FAF-MAPT						NIL

STRAIGHT-IN	CAT		A	B	C	D	E
	LNAV/VNAV		DA / (OCH)				
		ALS/NO ALS/ RVR ALS (m)					
		MDA / (OCH)					
		ALS/NO ALS/ RVR ALS (m)					
CIRCLING		MDA / (OCH)					NA
		VIS (m)					