

**INSTRUMENT APPROACH  
CHART (IAC)**

**NAVEGANTES / Ministro Victor Konder, INTL (SBNF)**

**RNP Y RWY 25 (AR)**

(CAT A,B,C)

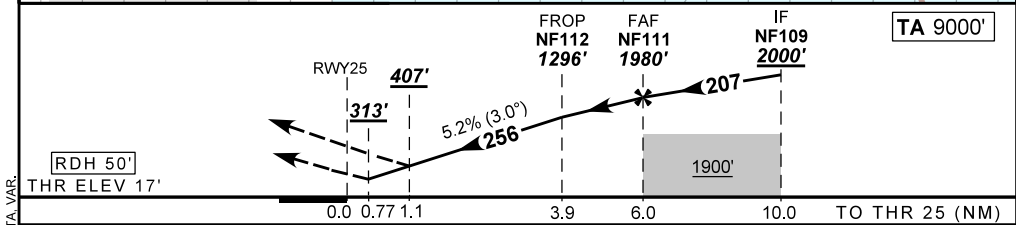
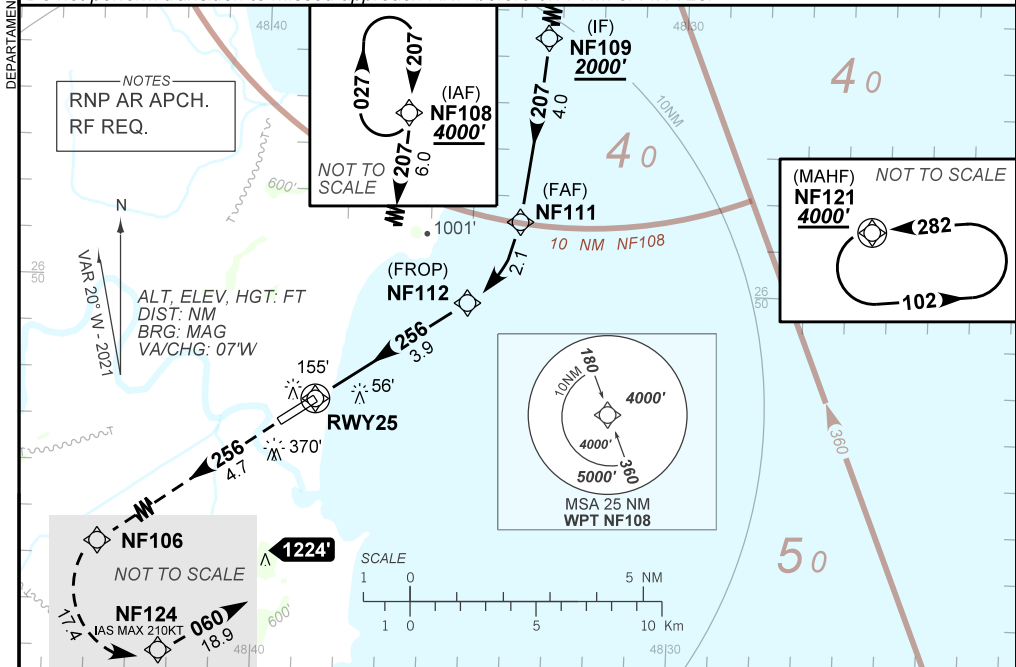
**AD ELEV: 18'**

ATIS <b>127.625</b>	APP FLORIANÓPOLIS <b>119.50 119.65 128.95 129.45 129.60</b>	TWR NAVEGANTES <b>118.20</b>	GNDC <b>NIL</b>
------------------------	--	---------------------------------	--------------------

TEMP LNAV/VNAV <b>MIN 0°C / MAX 40°C</b>	FINAL CRS <b>256°</b>	FAF: <b>1980'</b>	RNP 0.2 DA / (OCH): <b>313' / (296')</b>	RNP 0.3 DA / (OCH): <b>407' / (390')</b>
---	--------------------------	----------------------	---	---

APCH Perdida: 1) Subir para **4000'**. Manter rumo **256** até NF106. Após, curvar à ESQUERDA, até NF124. Após, rumo **060** para espera em NF121. 2) RNP 0.2: Gradiente MNM 3.5% até 500'. 3) IAS MAX 210KT até NF124.  
Missed APCH: 1) Climb to **4000'**. Maintain course **256** until NF106. Then, turn LEFT until NF124. Then, course **060** for holding at NF121. 2) RNP 0.2: MNM gradient 3.5% until 500'. 3) IAS MAX 210KT until NF124.

RMK: Não efetuar a transição para RNP da aproximação perdida antes 0.77 NM de RWY25.  
Do not perform transition to missed approach RNP before 0.77 NM of RWY25.



RWY25	0.77	1.1	2.0	3.0	4.0	NF111	Ground Speed (KT)	090	110	130	150	170	190
ALT	313	407	704	1022	1341	1980	FPM	500	600	700	800	900	NA
(HGT)	296	390	687	1005	1324	1963	FAF-MAPT	NIL					

STRAIGHT-IN	CAT	A	B	C	D	E
RNP 0.2	DA / (OCH)	313' / (296')				
Missed APCH Climb Gradient	3.5%	NIL / 1400 / NIL			NA	
RNP 0.3	DA / (OCH)	407' / (390')				
	ALS/NO ALS/ RVR ALS (m)	NIL / 1800 / NIL				

**AUTORIZAÇÃO ESPECIAL PARA AERONAVE E TRIPULAÇÃO REQUERIDA**  
SPECIAL AUTHORIZATION FOR AIRCRAFT AND CREW REQUIRED

DEPARTAMENTO DE CONTROLE DO ESPAÇO AÉREO