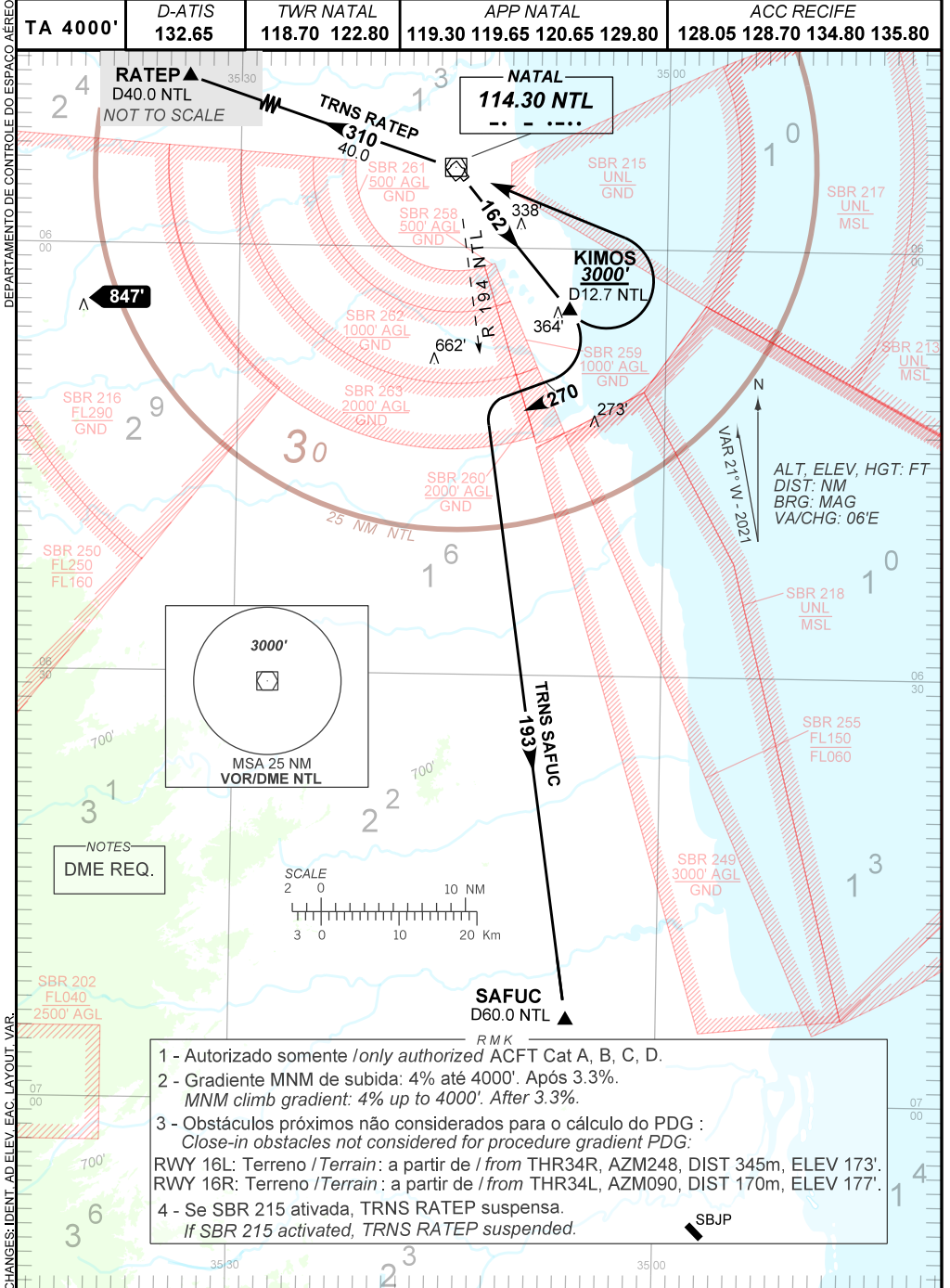


STANDARD DEPARTURE CHART
INSTRUMENT (SID)

NATAL / Augusto Severo, MIL (SBNT)
RWY 16L/16R
KIMOS 1A

AD ELEV: 171'

TA 4000'	D-ATIS 132.65	TWR NATAL 118.70 122.80	APP NATAL 119.30 119.65 120.65 129.80	ACC RECIFE 128.05 128.70 134.80 135.80
----------	------------------	----------------------------	--	---



- 1 - Autorizado somente /only authorized ACFT Cat A, B, C, D.
- 2 - Gradiente MNM de subida: 4% até 4000'. Após 3.3%.
MNM climb gradient: 4% up to 4000'. After 3.3%.
- 3 - Obstáculos próximos não considerados para o cálculo do PDG :
Close-in obstacles not considered for procedure gradient PDG:
RWY 16L: Terreno /Terrain: a partir de /from THR34R, AZM248, DIST 345m, ELEV 173'.
RWY 16R: Terreno /Terrain: a partir de /from THR34L, AZM090, DIST 170m, ELEV 177'.
- 4 - Se SBR 215 ativada, TRNS RATEP suspensa.
If SBR 215 activated, TRNS RATEP suspended.

CHANGES: IDENT, AD ELEV, EAC, LAYOUT, VAR