

STANDARD DEPARTURE CHART
INSTRUMENT (SID)

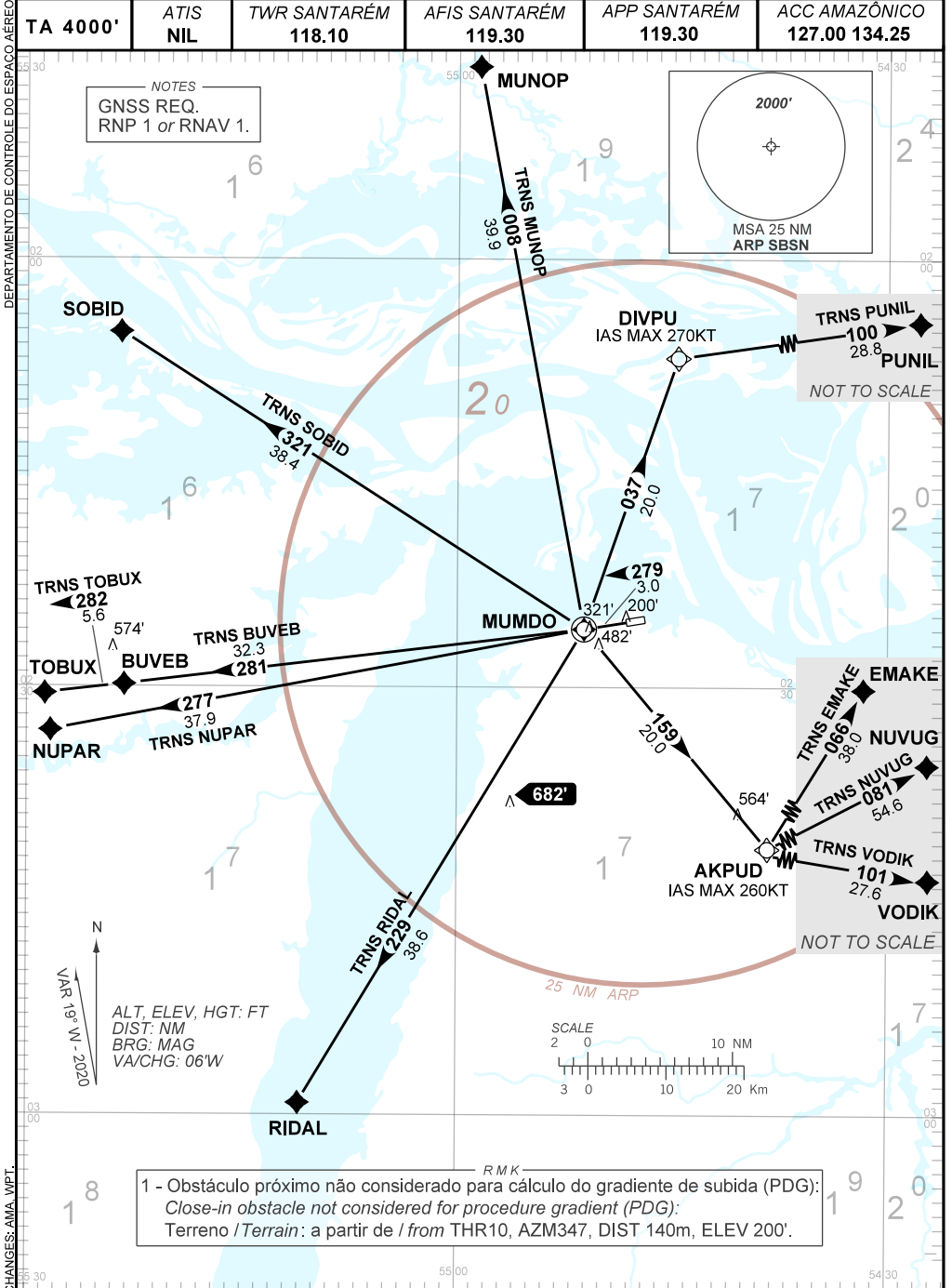
SANTARÉM / Maestro Wilson Fonseca, INTL (SBSN)

RWY 28

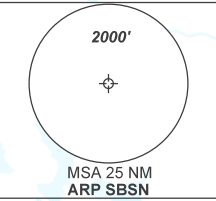
RNAV MUMDO 1A

AD ELEV: 197'

TA 4000'	ATIS NIL	TWR SANTARÉM 118.10	AFIS SANTARÉM 119.30	APP SANTARÉM 119.30	ACC AMAZÔNICO 127.00 134.25
----------	----------	---------------------	----------------------	---------------------	-----------------------------



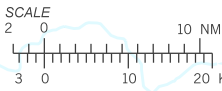
NOTES
GNSS REQ.
RNP 1 or RNAV 1.



TRNS PUNIL 100 28.8
PUNIL
NOT TO SCALE

TRNS EMAKE 066 36.0
EMAKE
TRNS NUVUG 081 54.6
NUVUG
TRNS VODIK 101 27.6
VODIK
NOT TO SCALE

ALT, ELEV, HGT: FT
DIST: NM
BRG: MAG
VA/CHG: 06'W



1 - Obstáculo próximo não considerado para cálculo do gradiente de subida (PDG):
Close-in obstacle not considered for procedure gradient (PDG):
Terreno / Terrain: a partir de l from THR10, AZM347, DIST 140m, ELEV 200'.

CHANGES: AMA. WPT.