

**INSTRUMENT APPROACH  
CHART (IAC)**

**BELO HORIZONTE / Tancredo Neves, INTL (SBCF)**

**AD ELEV: 2721'**

**ILS K RWY 16**

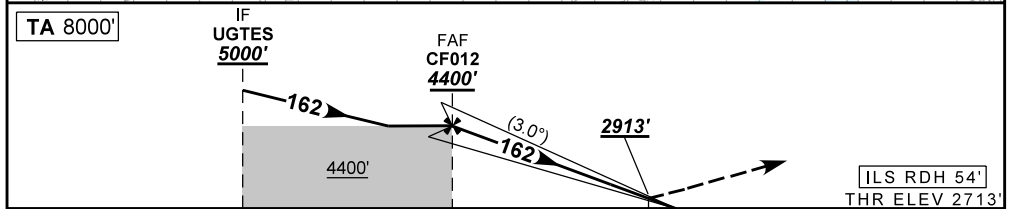
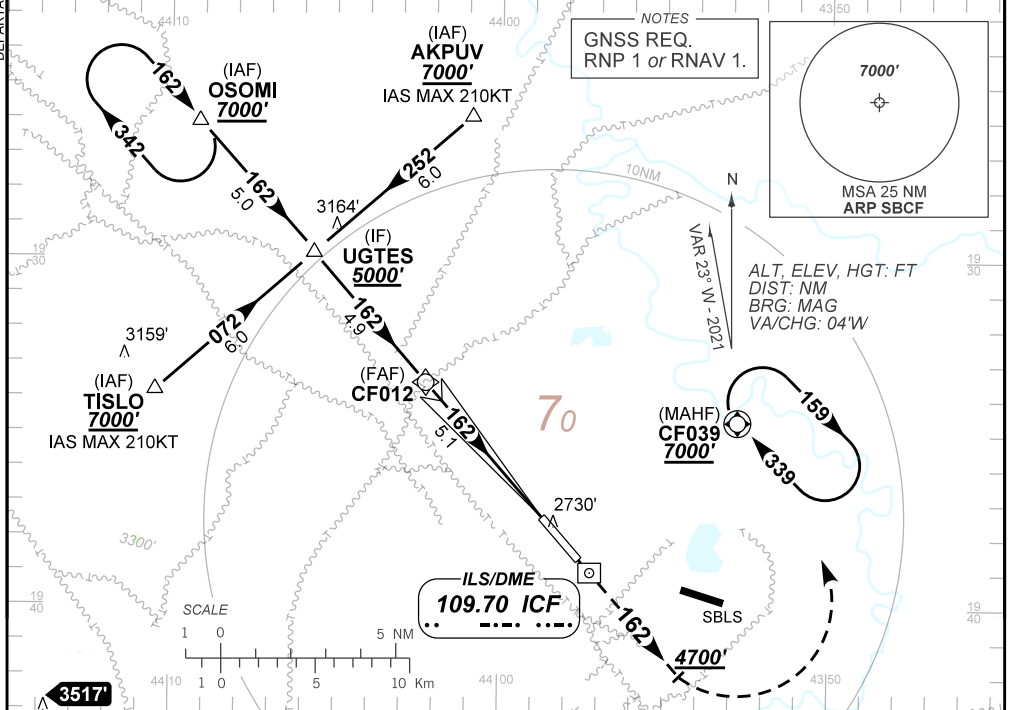
D-ATIS <b>127.85</b>	APP BELO HORIZONTE <b>119.10 119.30 119.65 120.20 128.55 129.10 129.40</b>	TWR CONFINES <b>118.20</b>	GNDC CONFINES <b>121.90</b>
-------------------------	---	-------------------------------	--------------------------------

LOC ICF <b>109.70 MHz</b>	FINAL CRS <b>162°</b>	FAF: <b>4400'</b>	CAT I DA / (OCH): <b>2913' / (200')</b>	<b>N/A</b>
------------------------------	--------------------------	----------------------	--	------------

APCH Perdida: 1) Subir para **7000'**. Manter o rumo **162°** até **4700'**. Após, curvar à ESQUERDA direto CF039 para espera. 2) IAS MAX 210KT na espera.  
Missed APCH: 1) Climb to **7000'**. Maintain course **162°** until **4700'**. After, turn LEFT direct CF039 for holding. 2) IAS MAX 210KT in holding.

RMK: (\*) VIS RVR ALS 550m para aproximação utilizando Diretor de Voo, Piloto Automático ou Head-Up Display (HUD).  
(\*) VIS RVR ALS 550m for approach using a Flight Director, Autopilot, or Head-Up Display (HUD).

DEPARTAMENTO DE CONTROLE DO ESPAÇO AÉREO



TO THR 16 (NM)	10.0	5.1	0.5	0.0
TO ICF (DME)	12.1	7.2	2.6	2.1

CF012	4.0	3.0	2.0	1.0	0.5	RWY16	Ground Speed (KT)	090	110	130	150	170	190	
	4400	4041	3722	3404	3085	2913	ALT	FPM	500	600	700	800	900	NA
	1687	1328	1009	691	372	200	(HGT)	FAF-MAPT	NA					

STRAIGHT-IN	CAT	A	B	C	D	E
CAT I	DA / (OCH)	2913' / (200')				NA
	ALS / NO ALS / RVR ALS (m)	800 / 1200 / 700 (*)				

CHANGES: PROC.

AIRAC AMDT 2308A1 10 AUG 23

SBCF\_IAC\_00Y 1/1  
IAC ILS K RWY 16