

**INSTRUMENT APPROACH  
CHART (IAC)**

**CURITIBA / Afonso Pena, INTL (SBCT)**

**AD ELEV: 2989'**

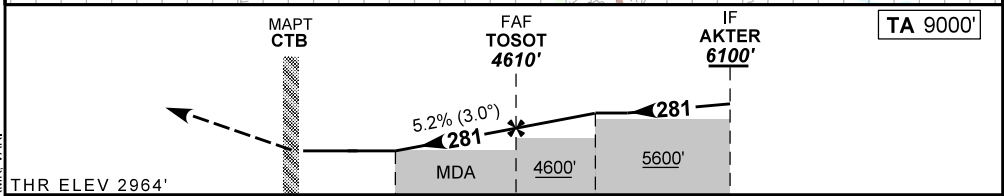
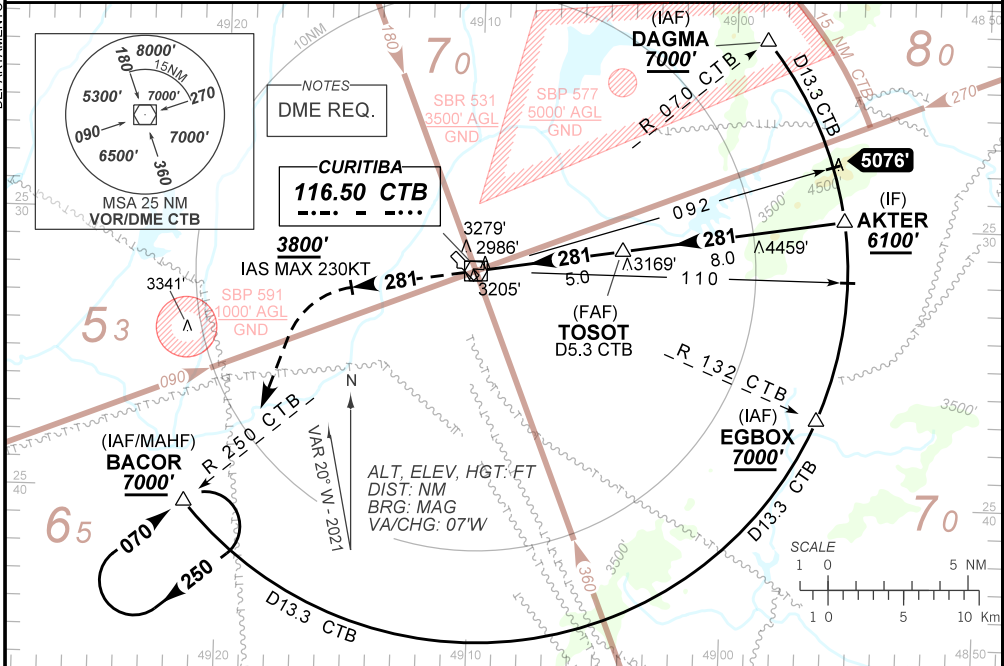
**VOR RWY 29**

D-ATIS <b>127.80</b>	APP CURITIBA <b>119.95 119.70 120.65 120.95 129.55 133.15</b>			TWR CURITIBA <b>118.15</b>	GNDC CURITIBA <b>121.90</b>
-------------------------	--	--	--	-------------------------------	--------------------------------

VOR CTB <b>116.50 MHz</b>	FINAL CRS <b>281°</b>	FAF: <b>4610'</b>	N/A	VOR MDA / (OCH): <b>3460' / (500')</b>
------------------------------	--------------------------	----------------------	-----	---

APCH Perdida: 1) Subir para **7000'**. Manter a RDL **281°** do VOR CTB até **3800'**. Após, curvar à ESQUERDA para interceptar a RDL **250°** do VOR CTB até BACOR para espera.  
Missed APCH: 1) Climb to **7000'**. Maintain **281°** RDL CTB VOR to **3800'**. After, turn LEFT to intercept **250°** RDL CTB VOR until BACOR for holding.

RMK: Evite SBP 591. Avoid SBP 591.



0.0	1.4	5.0	10.0	13.0	TO THR 29 (NM)
0.3	1.7	5.3	10.3	13.3	TO CTB (DME)

RWY29	1.4	2.0	3.0	4.0	TOSOT	Ground Speed (KT)	090	110	130	150	170	190
ALT	3460	3651	3969	4288	4610	FPM	500	600	700	800	900	NA
(HGT)	500	687	1005	1324	1646	FAF-MAPT	NA					

STRAIGHT-IN	CAT	A	B	C	D	E
VOR	MDA / (OCH)	3460' / (500')				
	ALS/SO ALS/ RVR ALS (m)	NIL / 1600 / NIL		NIL / 2300 / NIL		
CIRCLING	MDA / (OCH)	NA				
	VIS (m)	NA				