

**INSTRUMENT APPROACH
CHART (IAC)**

FORTALEZA / Pinto Martins, INTL (SBFZ)

AD ELEV: 83'

VOR RWY 31

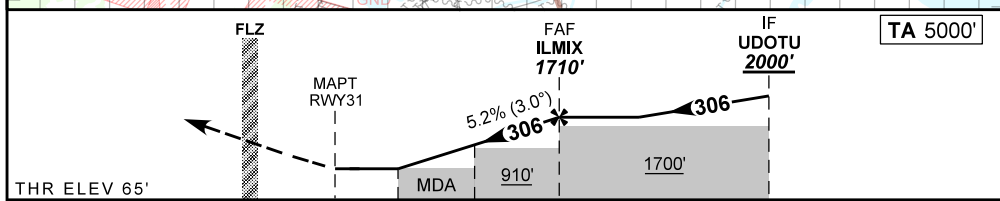
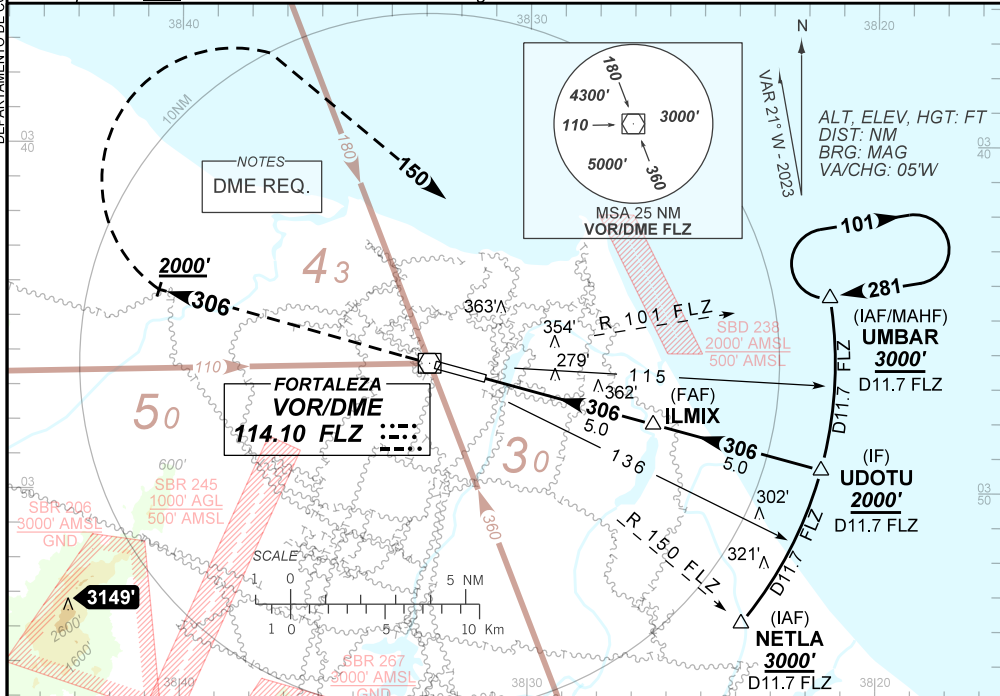
D-ATIS 127.70	APP FORTALEZA 120.50 133.00 134.55	TWR FORTALEZA 129.00	GNDC FORTALEZA 121.95
-------------------------	--	--------------------------------	---------------------------------

VOR FLZ 114.10 MHz	FINAL CRS 306°	FAF: 1710'	N/A	VOR MDA / (OCH): 610' / (550')
------------------------------	--------------------------	----------------------	-----	--

APCH Perdida: Subir para **3000'**. Manter RDL **306** do VOR FLZ até **2000'**. Após, curvar à DIREITA, proa **150**, para interceptar RDL **101** do VOR FLZ até UMBAR para espera.

Missed APCH: Climb to **3000'**. Maintain RDL **306** VOR FLZ until **2000'**. After, turn RIGHT, heading **150** to intercept RDL **101** VOR FLZ until UMBAR for holding.

DEPARTAMENTO DE CONTROLE DO ESPAÇO AÉREO



THR ELEV 65'	0.0	1.6	2.5	5.0	10.0	TO THR 31 (NM)
	1.7	3.3	4.2	6.7	11.7	TO FLZ (DME)

RWY31	1.6	2.0	2.5	3.0	4.0	ILMIX	Ground Speed (KT)	090	110	130	150	170	190
ALT	610	752	911	1070	1389	1710	FPM	500	600	700	800	900	NA
(HGT)	550	687	846	1005	1324	1645	FAF-MAPT	NA					

CHANGES: MDA, OBST, OCH.

STRAIGHT-IN	CAT	A	B	C	D	E
	MDA / (OCH)	610' / (550')				NA
VOR	ALS / NO ALS / RVR (m)	NIL / 1600 / NIL		NIL / 2500 / NIL		NA
	MDA / (OCH)	NA				
CIRCLING	MDA / (OCH)	NA				
	VIS (m)	NA				