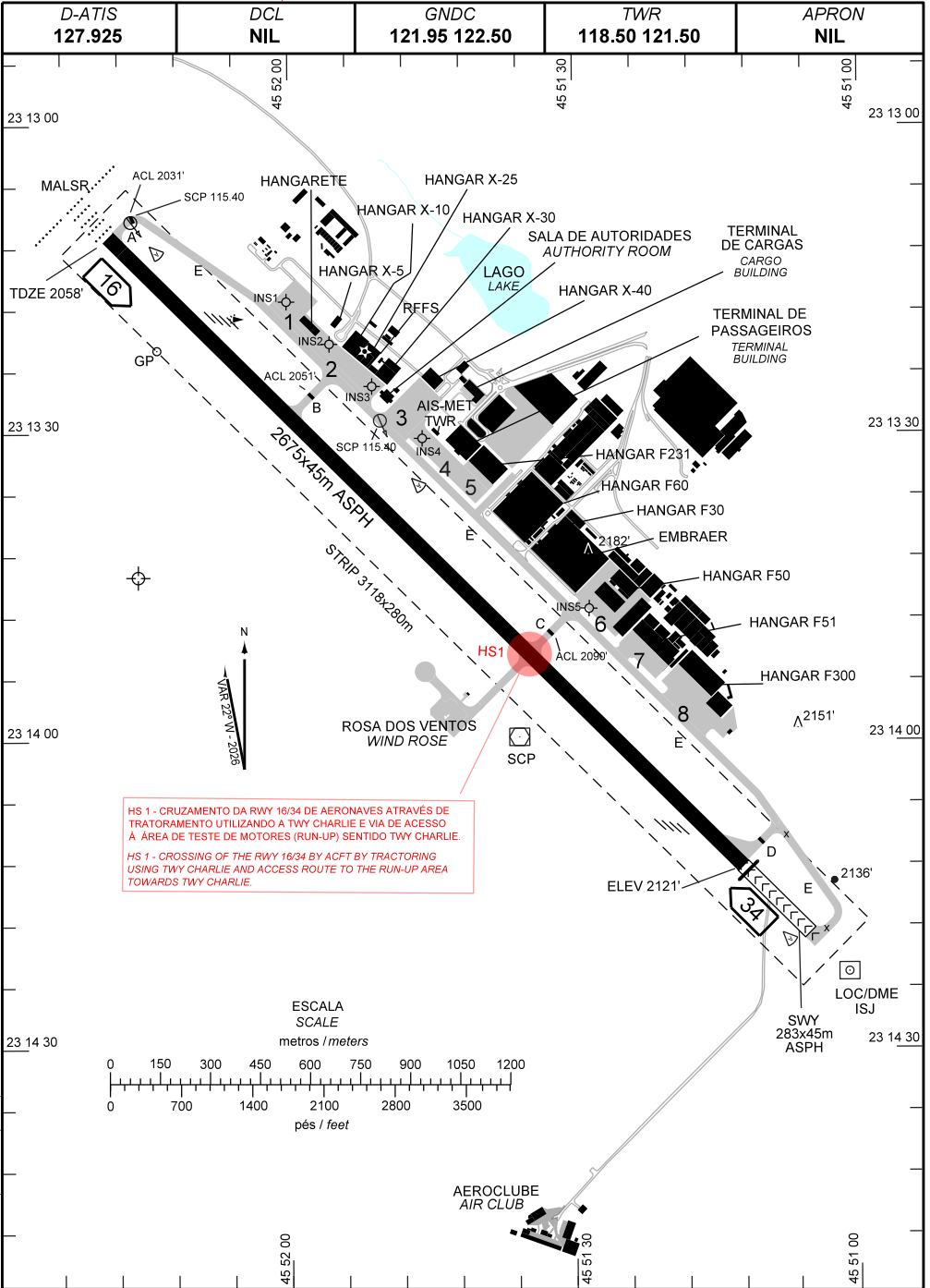


AD ELEV: 2123'

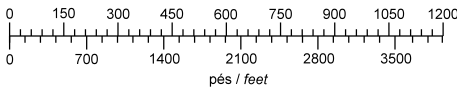
ARP S23 13 44 W045 52 16



HS 1 - CRUZAMENTO DA RWY 16/34 DE AERONAVES ATRAVÉS DE TRATORAMENTO UTILIZANDO A TWY CHARLIE E VIA DE ACESSO À ÁREA DE TESTE DE MOTORES (RUN-UP) SENTIDO TWY CHARLIE.

HS 1 - CROSSING OF THE RWY 16/34 BY ACFT BY TRACTORING USING TWY CHARLIE AND ACCESS ROUTE TO THE RUN-UP AREA TOWARDS TWY CHARLIE.

ESCALA SCALE
metros / meters



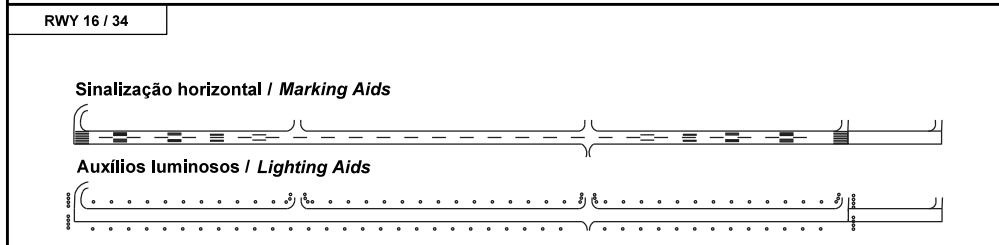
CHANGES: AADS, HOTSPOT, PAPI, RMK.

ADC - SBSJ: INFORMAÇÕES COMPLEMENTARES / COMPLEMENTARY INFORMATION

CARACTERÍSTICAS FÍSICAS / PHYSICAL CHARACTERISTICS											
PISTA RUNWAY				DIMENSÕES(m) DIMENSIONS(m)				PCN	TIPO DE SUPERFÍCIE SURFACE KIND		
RWY	BRG MAG	Tipo Type	RCD	RWY	SWY	CWY	STRIP	RWY	RWY	SWY	
a	b	c	d	e	f	g	h	i	j	k	
16	157	PA-1	4D	2675x45	283x45		3118 x 280	71/F/A/X/T	ASPH	ASPH	
34	337	NPA	4D								

DISTÂNCIAS DECLARADAS, AUXÍLIOS VISUAIS E COORDENADAS DAS CABECEIRAS DECLARED DISTANCES, VISUAL AIDS AND THRESHOLD COORDINATES							
RWY	TORA(m)	TODA(m)	ASDA(m)	LDA(m)	AUXÍLIOS / AIDS	ALTURA GEODAL(m) GEOD HEIGHT(m)	COORDENADAS COORDINATES
16	2675	2675	2958	2675	PAPI/MALSR	-2,56	S23 13 11 W045 52 19
34	2675	2675	2675	2675	PAPI	-2,60	S23 14 12 W045 51 12

SERVIÇO DE SALVAMENTO E CONTRAINCÊNDIO / RESCUE AND FIRE FIGHTING SERVICE: RFFS REQ - 05



- RMK:**
- 1) MEHT : RWY 16 - 58 FT.
RWY 34 - 77,2 FT.
 - 2) ACFT COM DEST PATIO MIL CONTACTAR OPR NA FREQ 122.50.
 - 3) DESCRIÇÃO DOS PÁTIOS / APRON DESCRIPTION :
 PÁTIO / APRON 1: PCAN
 PÁTIO / APRON 2: IPEV
 PÁTIO / APRON 3: AUTORIDADES / AUTHORITY
 PÁTIO / APRON 4: AVIAÇÃO GERAL E TERMINAL DE PASSAGEIROS /
 GENERAL AVIATION AND TERMINAL BUILDING
 PÁTIO / APRON 5: DIGEX
 PÁTIO / APRON 6/7/8: EMBRAER

CHANGES: AIDS, HOTSPOT, PAPI, RMK.