

**INSTRUMENT APPROACH
CHART (IAC)**

PIRASSUNUNGA / Campo Fontenelle, MIL (SBYS)

ILS Y or LOC Y RWY 02C

CAT (A, B)

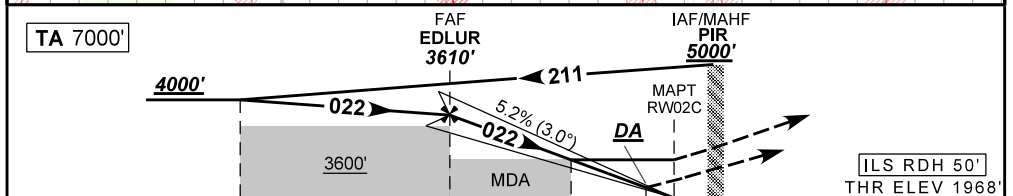
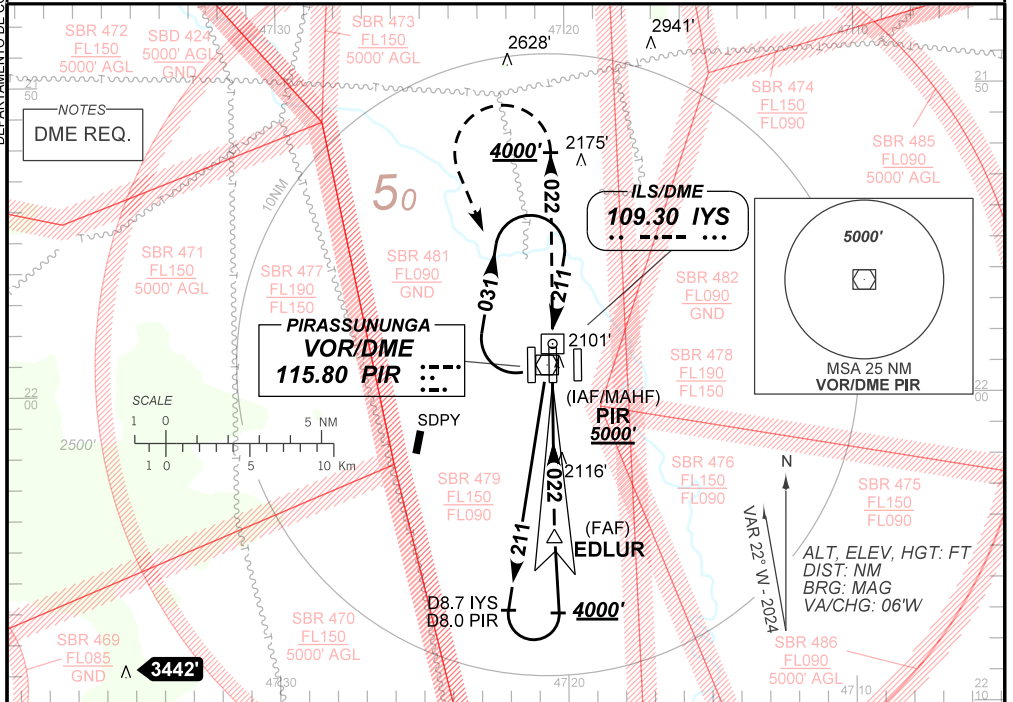
AD ELEV: 1976'

| | | | |
|----------------------------------|---|---|--|
| ATIS 127.70 | APP ACADEMIA 120.10 122.40 122.80 124.90 135.45 | TWR ACADEMIA 118.30 | GND C ACADEMIA 121.90 |
| ILS/DME IYS 109.30 MHz | FINAL CRS 022° | FAF: 3610' | CAT I DA / (OCH): 2168' / (200') |
| | | LOC MDA / (OCH): 2390' / (430') | |

APCH Perdida: Subir para **5000'**. Manter o rumo **022** até **4000'**. Após, curvar à ESQUERDA direto VOR PIR para espera.

Missed APCH: Climb to **5000'**. Maintain course **022** until **4000'**. After, turn LEFT direct PIR VOR for holding.

DEPARTAMENTO DE CONTROLE DO ESPAÇO AEREO



| | | | | | |
|-----------------|-----|-----|-----|-----|-----|
| TO THR 02C (NM) | 7.4 | 5.0 | 1.2 | 0.5 | 0.0 |
| TO IYS (DME) | 8.7 | 6.3 | 2.5 | 1.8 | 1.3 |

| | | | | | | | | | | | | | |
|--|-------|------|------|------|------|-------|-------------------|-----|-----|-----|-----|-----|-----|
| | EDLUR | 4.0 | 3.0 | 2.0 | 1.2 | RW02C | Ground Speed (KT) | 090 | 110 | 130 | 150 | 170 | 190 |
| | 3610 | 3292 | 2973 | 2655 | 2390 | ALT | FPM | 500 | 600 | 700 | NA | | |
| | 1642 | 1324 | 1005 | 687 | 430 | (HGT) | FAF-MAPT | NA | | | | | |

| | | | | | | |
|-------------|-------------------------|------------------|---|----|---|---|
| STRAIGHT-IN | CAT | A | B | C | D | E |
| | DA / (OCH) | 2168' / (200') | | NA | | |
| CAT I | ALS/NO ALS/ RVR ALS (m) | NIL / 1200 / NIL | | NA | | |
| | MDA / (OCH) | 2390' / (430') | | NA | | |
| LOC | ALS/NO ALS/ RVR ALS (m) | NIL / 1600 / NIL | | NA | | |
| | MDA / (OCH) | | | NA | | |
| CIRCLING | MDA / (OCH) | | | NA | | |
| | VIS (m) | | | NA | | |

CHANGES: PROC. VAR. LAYOUT.