

**INSTRUMENT APPROACH
CHART (IAC)**

FORTALEZA / Pinto Martins, INTL (SBFZ)

AD ELEV: 82'

RNP RWY 13

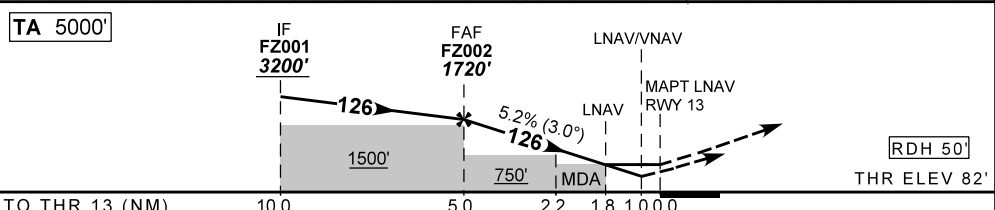
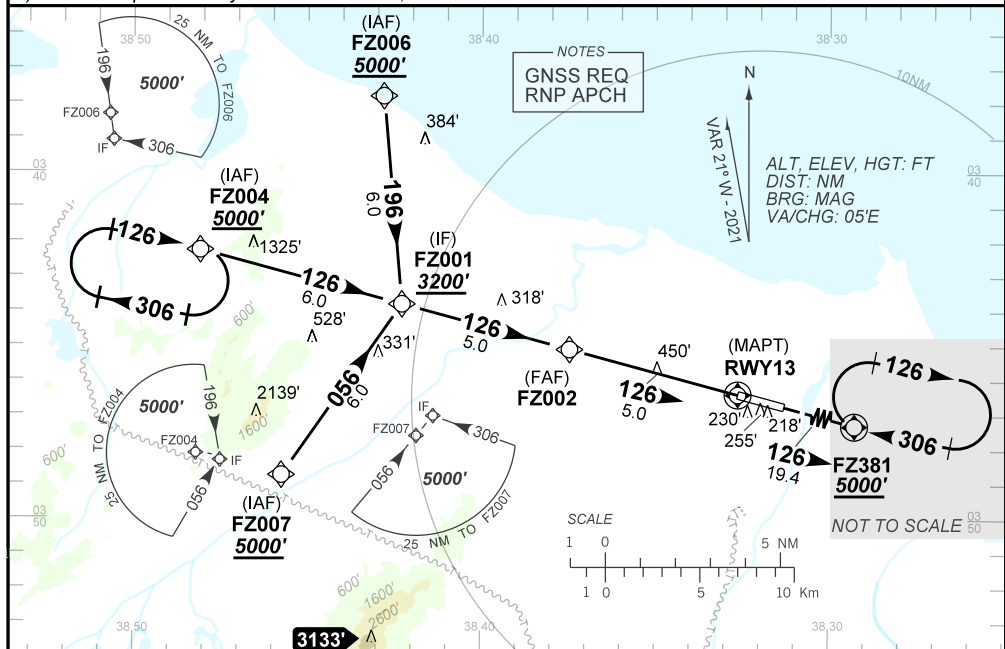
D-ATIS 127.70	APP FORTALEZA 120.50 122.50 133.00 134.55		TWR FORTALEZA 129.00	GNDZ FORTALEZA 121.95
N/A	FINAL CRS 126°	FAF: 1720'	LNAV/VNAV DA / (OCH): 434' / (352')	LNAV MDA / (OCH): 700' / (620')

APCH Perdida : Subir para **5000'** no rumo **126** para espera em FZ381.

Missed APCH: Climb to **5000'** on course **126** for holding at FZ381.

RMK: 1) Para sistemas não compensados Baro-VNAV, LNAV/VNAV NÃO AUTORIZADO abaixo de -10°C ou acima de 50°C.

1) For uncompensated systems Baro-VNAV, LNAV/VNAV NOT AUTHORIZED below -10°C or above 50°C.



	FZ002	4.0	3.0	2.0	1.8	RWY13		KT	090	110	130	150	170	190
	1720	1400	1085	770	700	ALT		FPM	500	600	700	800	900	1000
	1638	1318	1003	688	620	(HGT)		FAF-MAPT	NA					

STRAIGHT-IN	CAT	A	B	C	D	E
	DA / (OCH)	434' / (352')				NA
LNAV/VNAV	ALS/NO ALS/ RVR ALS (m)	NIL / 1600 / NIL				NA
	MDA / (OCH)	700' / (620')				
LNAV	ALS/NO ALS/ RVR ALS (m)	NIL / 1600 / NIL		NIL / 2800 / NIL		
	MDA / (OCH)	NA				
CIRCLING	MDA / (OCH)	NA				
	VIS (m)	NA				

CHANGES: IDENT, VAR.