

**INSTRUMENT APPROACH
CHART (IAC)**

**RIO DE JANEIRO / Santos Dumont (SBRJ)
RNP W RWY 20L (AR)**

AD ELEV: 10'

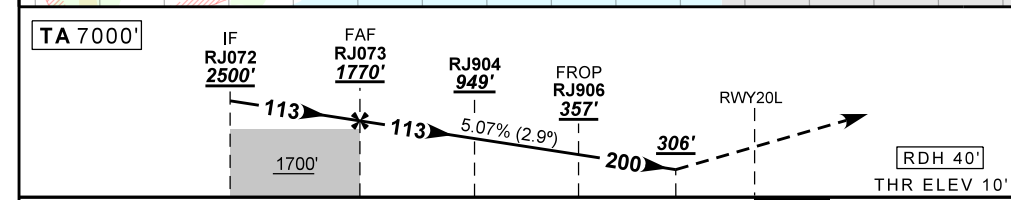
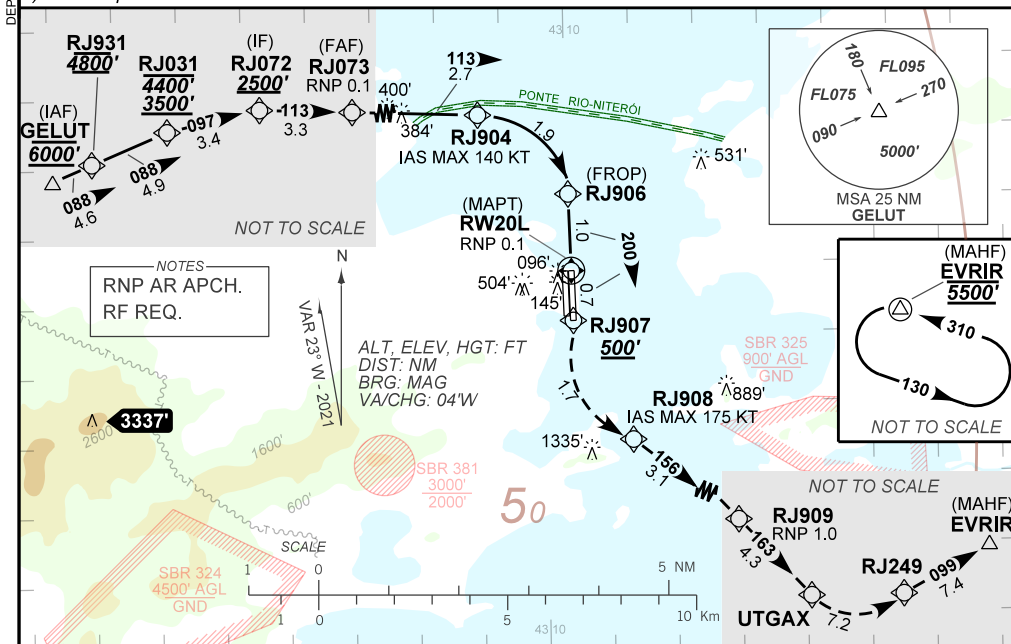
CAT (A,B,C)

D-ATIS 132.65	APP RIO 133.30 124.95 134.95 126.20 129.80 128.90 119.35 125.95 134.40 121.25	TWR RIO 118.70	GNDC RIO 121.70
-------------------------	---	--------------------------	---------------------------

TEMP LNAV/VNAV MIN 10°C / MAX 45°C	FINAL CRS 200°	FAF: 1770'	RNP 0.1 DA / (OCH): 306' / (296')	N/A
--	--------------------------	----------------------	---	------------

APCH Perdida: 1) Subir para **5500'**. Manter rumo **200** até RJ907. Após, curvar à ESQUERDA para RJ908. Manter rumo **156** até RJ909. Curvar à ESQUERDA, rumo **163** UTGAX. Após, curvar à ESQUERDA até RJ249. Manter rumo **099** até EVRIR para espera. 2) RNP menor que 1.0. Missed APCH: 1) Climb to **5500'**. Maintain course **200** until RJ907. After, turn LEFT to RJ908. Maintain course **156** until RJ909. Turn LEFT, on course **163** until UTGAX. After, turn LEFT until RJ249. Maintain course **099** until EVRIR for holding. 2) RNP below 1.0

RMK: 1) Não efetuar transição para RNP da aproximação perdida antes de 0.83NM de RW20L. 2) Trajetória vertical e PAPI não coincidentes. 1) Do not perform RNP transition of Missed APCH before 0.83NM from RW20L. 2) Vertical path and PAPI not coincident.



RJ073	4.0	RJ904	2.0	RJ906	0.83	RWY20L	Ground Speed (KT)	090	100	110	120	130	140
1770	1278	949	664	357	306	ALT	FPM	500	550	600	650		NA
1760	1268	939	654	347	296	(HGT)	FAF-MAPT	NIL					

STRAIGHT-IN	CAT	A	B	C	D	E
	DA / (OCH)	306' / (296')			NA	
RNP 0.1	ALS/NO ALS/ RVR ALS (m)	NIL / 1600 / NIL			NA	

**AUTORIZAÇÃO ESPECIAL PARA AERONAVE E TRIPULAÇÃO REQUERIDA
SPECIAL AUTHORIZATION FOR AIRCRAFT AND CREW REQUIRED**