

INSTRUMENT APPROACH CHART (IAC)

RECIFE / Guarapes - Gilberto Freyre, INTL (SBRF)

AD ELEV: 33'

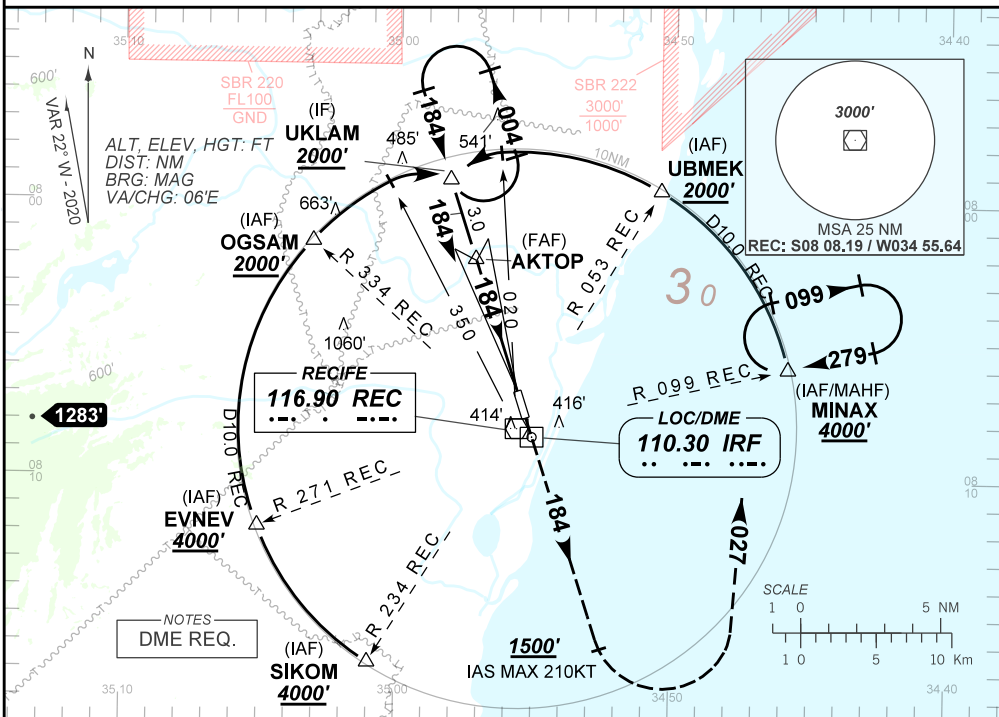
ILS Z or LOC Z RWY 18

D-ATIS 127.65					APP RECIFE 119.50 119.95 120.40 129.60 121.50					TWR RECIFE 118.35 125.25 122.80 (MIL) 121.50			GNDC RECIFE 121.85	
LOC/DME IRF 110.30		FINAL CRS 184°		FAF 1670'		CAT I DA / (OCH): 223' / (200')			LOC ONLY MDA / (OCH): 660' / (640')					

APCH Perdida: 1) Subir para **4000'**. Manter proa **184** até cruzar **1500'**. Após, curvar à ESQUERDA na proa **027** para interceptar RDL **099** do VOR REC até MINAX para espera. 2) IAS MAX 210 KT

Missed APCH: 1) Climb to **4000'**. Maintain heading **184** until passing **1500'**. After, turn LEFT heading **027** to intercept **099** RDL REC VOR up to MINAX for holding. 2) IAS MAX 210 KT.

RMK: NIL.



STRAIGHT-IN	CAT	A	B	C	D	E
CAT I	DA / (OCH)	223' / (200')				NA
	ALS/NO ALS/ RVR ALS (m)	NIL / 1200 / NIL				
LOC	MDA / (OCH)	660' / (640')				
	ALS/NO ALS/RVR ALS (m)	NIL / 1600 / NIL		NIL / 2900 / NIL		
CIRCLING	MDA / (OCH)	NA				
	VIS (m)	NA				

CHANGES: FREQ, LAYOUT, MNM, PROC.