

INSTRUMENT APPROACH
CHART (IAC)

JAGUARUNA / Regional Sul (SBJA)

AD ELEV: 115'

NDB RWY 05

ATIS NIL	APP NIL	AFIS JAGUARUNA 130.70	GNDC NIL
-------------	------------	--------------------------	-------------

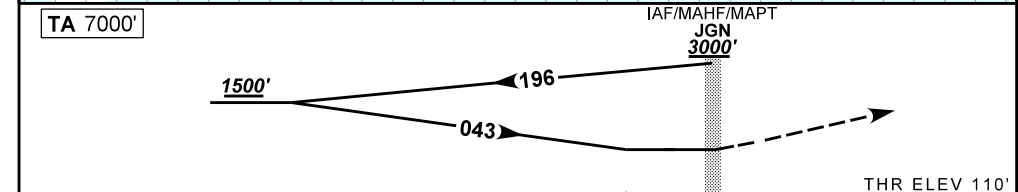
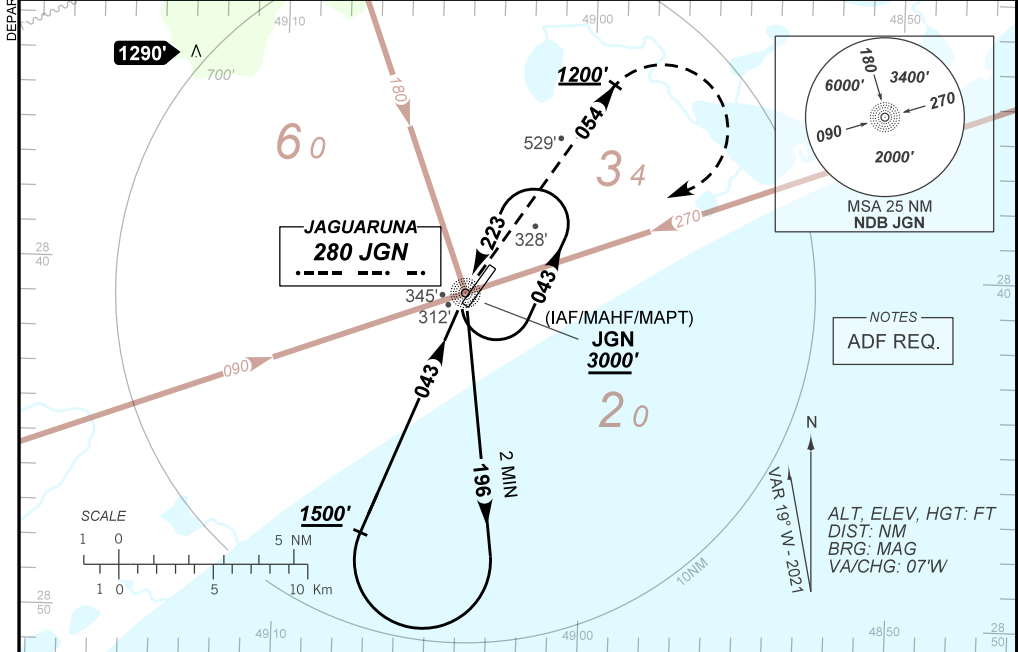
NDB JGN 280 KHz	FINAL CRS 043°	N/A	N/A	NDB MDA / (OCH): 800' / (690')
--------------------	-------------------	-----	-----	-----------------------------------

APCH Perdida: 1) Subir para **3000'**. Manter QDR **054** JGN até **1200'**. Após, curvar à DIREITA para o NDB JGN para espera. 2) IAS MAX 220 KT na curva.

Missed APCH: 1) Climb to **3000'**. Maintain **054** QDR JGN until **1200'**. After, turn RIGHT direct to JGN NDB for holding. 2) IAS MAX 220 KT on turn.

RMK: 1) ACFT procedente do setor W coordenar com Rádio Criciúma em 131.95. 2) Proibido circular pelo setor W.

1) ACFT from W sector coordinate with Radio Criciúma frequency 131.95. 2) Prohibited to circling through W sector.



CHANGES: HDG. LAYOUT. VAR. PROC.

NIL	RWY05	Ground Speed (KT)	090	110	130	150	170	190
NIL	ALT	FPM	650					NA
NIL	(HGT)	FAF-MAPT	NA					NA

STRAIGHT-IN	CAT	A	B	C	D	E
NDB	MDA / (OCH)	800' / (690')				NA
	ALS/NO ALS/ RVR ALS (m)	NIL / 1600 / NIL		NIL / 3200 / NIL		
CIRCLING	MDA / (OCH)	NA				
	VIS (m)	NA				