

**INSTRUMENT APPROACH
CHART (IAC)**

AD ELEV: 285'

**USO EXCLUSIVO ACFT MILITARES
MILITARY ACFT ONLY**

CACEQUI / Saicã, MIL (SSCQ)

RNP 210

PINS - (CAT H)

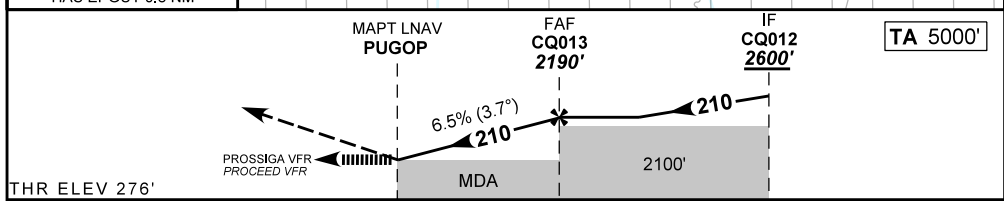
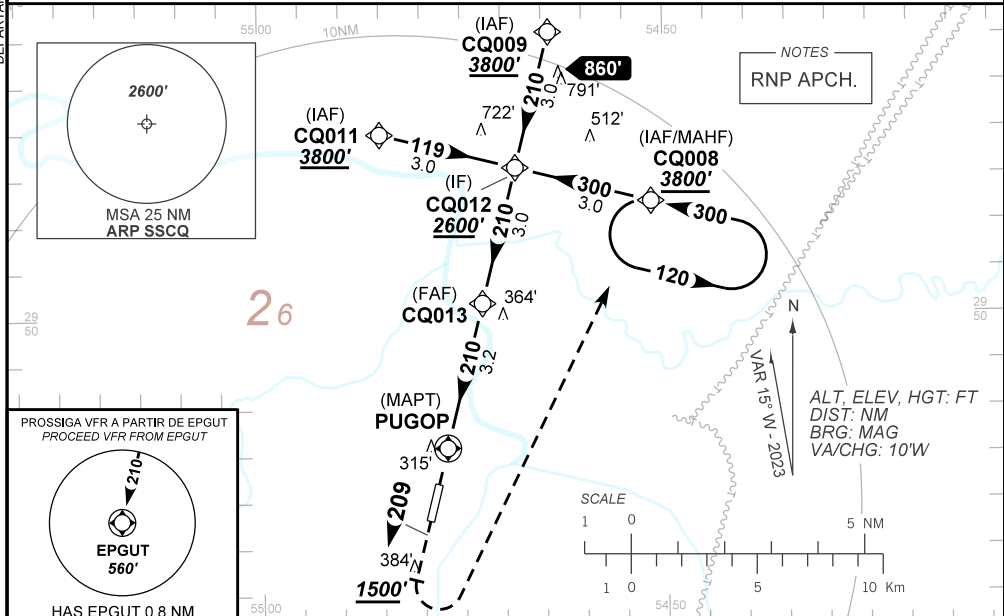
DEPARTAMENTO DE CONTROLE DO ESPAÇO AÉREO

ATIS SANTA MARIA 127.75	APP SANTA MARIA 119.35 121.35		TWR NIL	GNDC NIL
N/A	FINAL CRS 210°	FAF: 2190'	N/A	
LNAV RASS (SBSM) MDA / (OCH): 920' / (640')				

APCH Perdida: Subir para **3800'**. Manter proa **209** até **1500'**. Após, curvar à ESQUERDA direto CQ008 para espera.

Missed APCH: Climb to **3800'**. Maintain heading **209** until **1500'**. After, turn LEFT direct CQ008 for holding.

RMK: Informações complementares no verso.
See reverse side for additional information.



0.0	0.0	0.8	3.2	6.2	TO MAPT (NM)
			4.0	7.0	TO THR 21 (NM)

MAPT	PUGOP	1.0	2.0	CQ013		Ground Speed (KT)	060	070	080	090	100	110
ALT	920	1315	1710	2190		FPM	390	450	520	580	NA	NA
(HGT)	NIL					FAF-MAPT	NIL					

STRAIGHT-IN	CAT	H
LNAV RASS (SBSM)	MDA / (OCH)	920' / (640')
	VIS (m)	1500
CIRCLING	MDA / (OCH)	NA
	VIS (m)	

CHANGES: NEW CHART.

AIRAC AMDT 2401A1 25 JAN 24

USO EXCLUSIVO ACFT MILITARES / MILITARY ACFT ONLY

SSCQ_IAC_00C 1/2
IAC RNP 210

DEPARTAMENTO DE CONTROLE DO ESPAÇO AÉREO

— R M K —

- 1- Requerido FPL "Y" com mudança de regras de voo para VFR em PUGOP.
FPL "Y" required with flight rules change to VFR at PUGOP.
- 2- Procedimento exclusivo para helicópteros.
Exclusive procedure for helicopters.
- 3 - É de responsabilidade do piloto em comando a separação com obstáculos e terreno entre o PUGOP e a THR21.
It is the responsibility of the pilot in command for separation with obstacles and terrain between PUGOP and THR21.
- 4- Utilizar o ajuste-altímetro de SBSM.
Use altimeter setting from SBSM.

CHANGES: NEW CHART.