

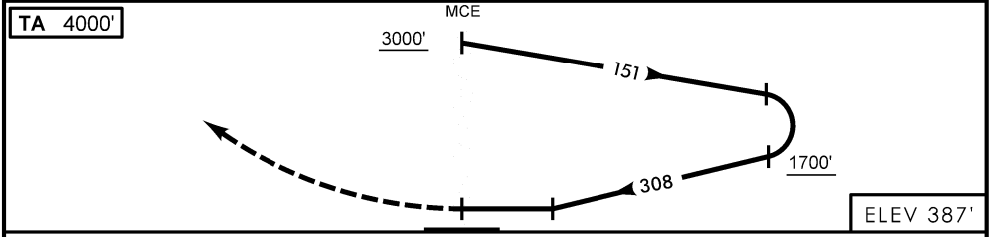
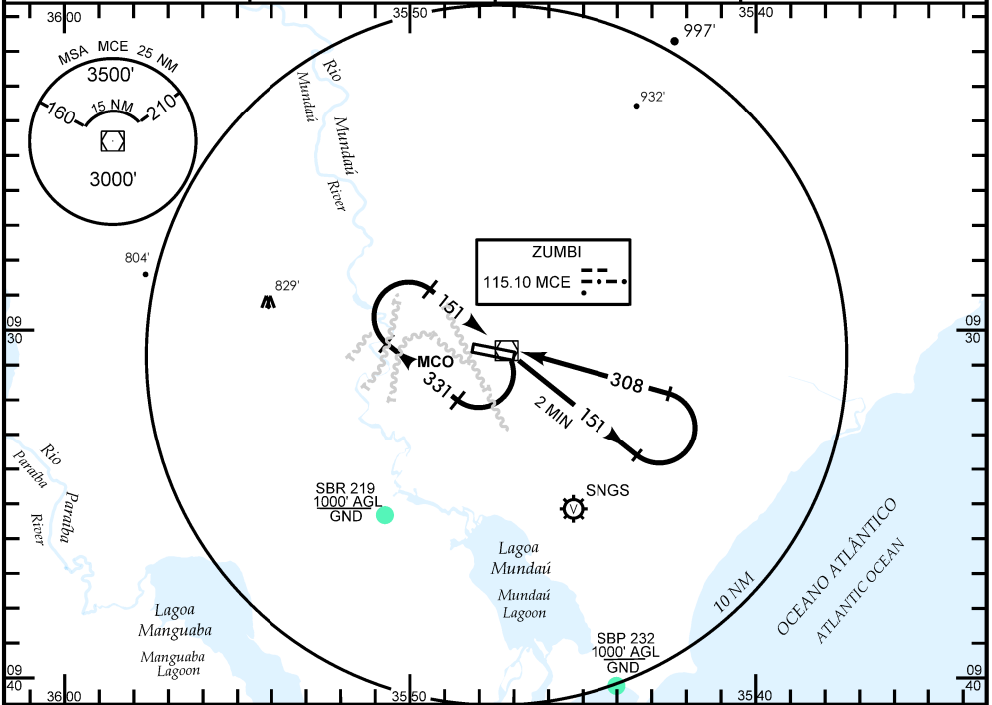
MACEIÓ / Zumbi dos Palmares, INTL (SBMO)

AL-BRASIL

VOR Y RWY 30

IAC - SBMO WGS-84

D-ATIS NIL	APP MACEIÓ 119.25 128.90	TWR MACEIÓ 118.00 118.25	GNDC NIL
---------------	-----------------------------	-----------------------------	-------------



NM
APROXIMAÇÃO PERDIDA SUBIR PARA 3000' NA RDL 308.
 MISSED APPROACH CLIMB TO 3000' AT RDL 308.

RMK	NIL			
C	POUSO DIRETO RWY 30	STRAIGHT-IN TO RWY 30	IFR OPS	DIURNA / NOTURNA DAY / NIGHT
A	VOR			PARA CIRCULAR TO CIRCLING
T	MDA 980'		OCH 620'	
	VIS			CAT
A	1600 M			A
B				B
C				C
D	2800 M			D
E				E
	RAZÃO DE DESCIDA NA APROXIMAÇÃO FINAL RATE OF DESCENT ON FINAL APPROACH			
KT	90	110	130	140
FPM	600			

CHANGES: ADEL, D-ATIS, F.A.C., IDENT, MINM, OPR.

DEPARTAMENTO DE CONTROLE DO ESPAÇO AEREO - COMAER - BRASIL