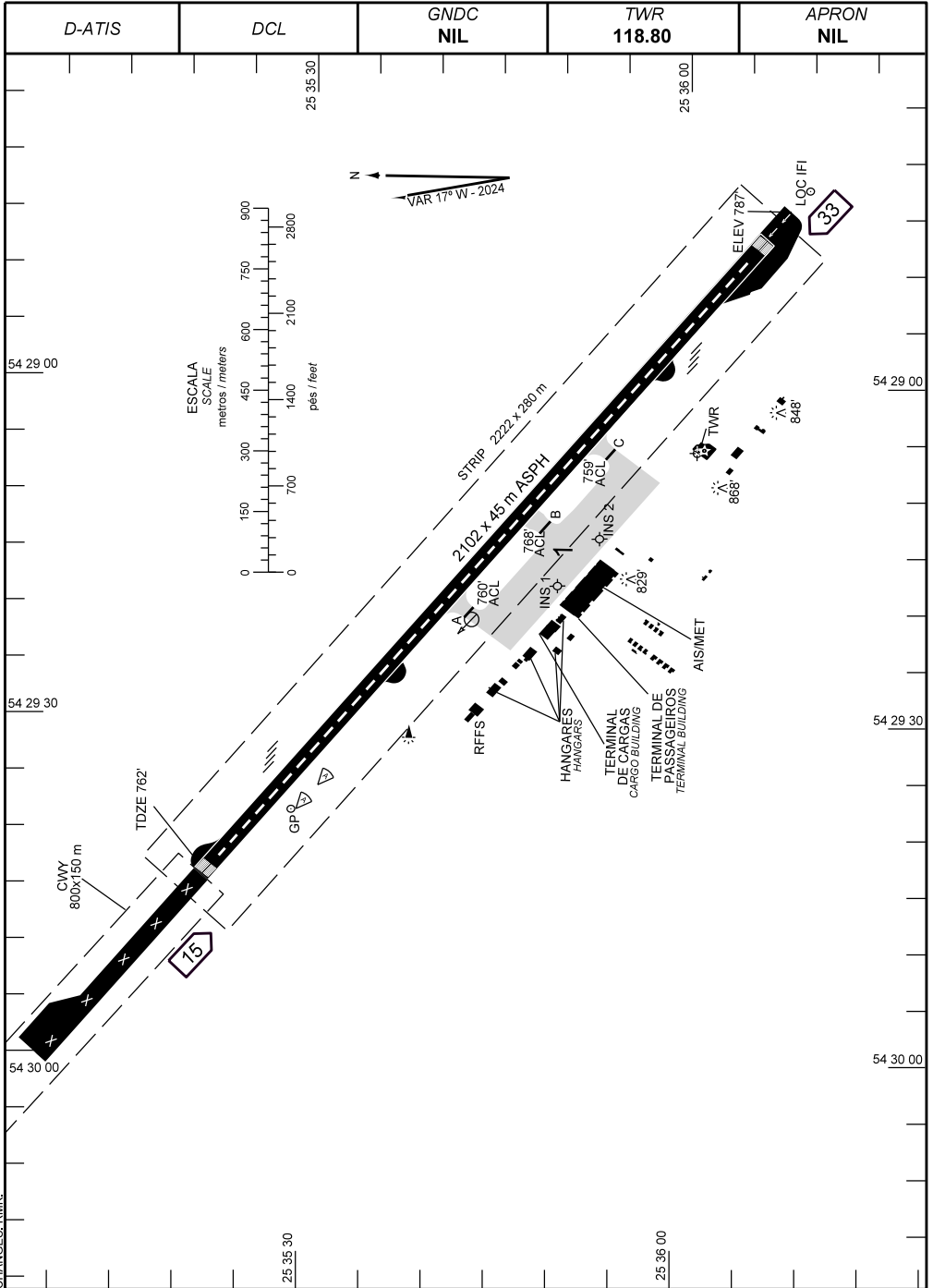


AD ELEV: 787'

ARP S25 36 01 W054 29 06



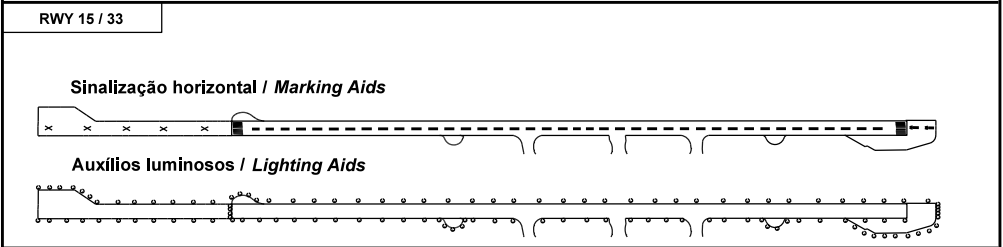
CHANGES: RMK.

**ADC - SBFI: INFORMAÇÕES COMPLEMENTARES / COMPLEMENTARY INFORMATION**

CARACTERÍSTICAS FÍSICAS / PHYSICAL CHARACTERISTICS											
PISTA RUNWAY				DIMENSÕES(m) DIMENSIONS(m)				PCN	TIPO DE SUPERFÍCIE SURFACE KIND		
RWY	BRG MAG	Tipo Type	RCD	RWY	SWY	CWY	STRIP	RWY	RWY	SWY	
a	b	c	d	e	f	g	h	i	j	k	
15	148	PA-1	4C	2102x45		800x150	2222 x 280	67/F/A/X/T	ASPH		
33	328	NPA	4C								

DISTÂNCIAS DECLARADAS, AUXÍLIOS VISUAIS E COORDENADAS DAS CABECEIRAS DECLARED DISTANCES, VISUAL AIDS AND THRESHOLD COORDINATES							
RWY	TORA(m)	TODA(m)	ASDA(m)	LDA(m)	AUXÍLIOS / AIDS	ALTURA GEOIDAL(m) GEOD HEIGHT(m)	COORDENADAS COORDINATES
15	2102	2102	2102	2102	PAPI	5,06	S25 35 22 W054 29 44
33	2102	2902	2102	2102	PAPI	5,03	S25 36 06 W054 28 47

**SERVIÇO DE SALVAMENTO E CONTRAINCÊNDIO / RESCUE AND FIRE FIGHTING SERVICE: RFFS REQ - 07**



**RMK:** 1) MEHT: PAPI - RWY 15 - 53FT  
RWY 33 - 40FT.

2) INS 1: S25 35 50 W54 29 18  
INS 2: S25 35 53 W54 29 14

CHANGES:RMK.