

INSTRUMENT APPROACH **GUARANTÁ DO NORTE / Campo de Provas Brtgado Veloso (CPBV), MIL (SBCC)**
 CHART **(IAC)**

**USO EXCLUSIVO F-39
 F-39 USE ONLY**

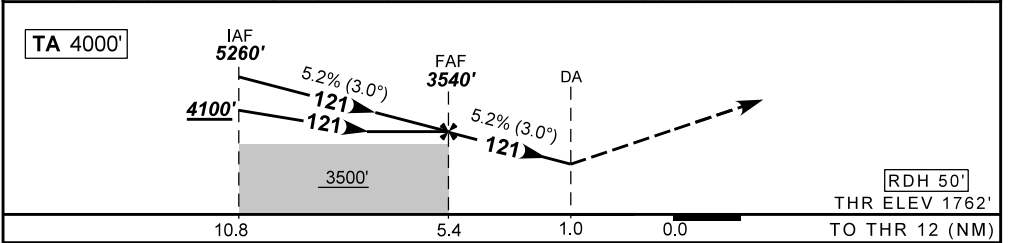
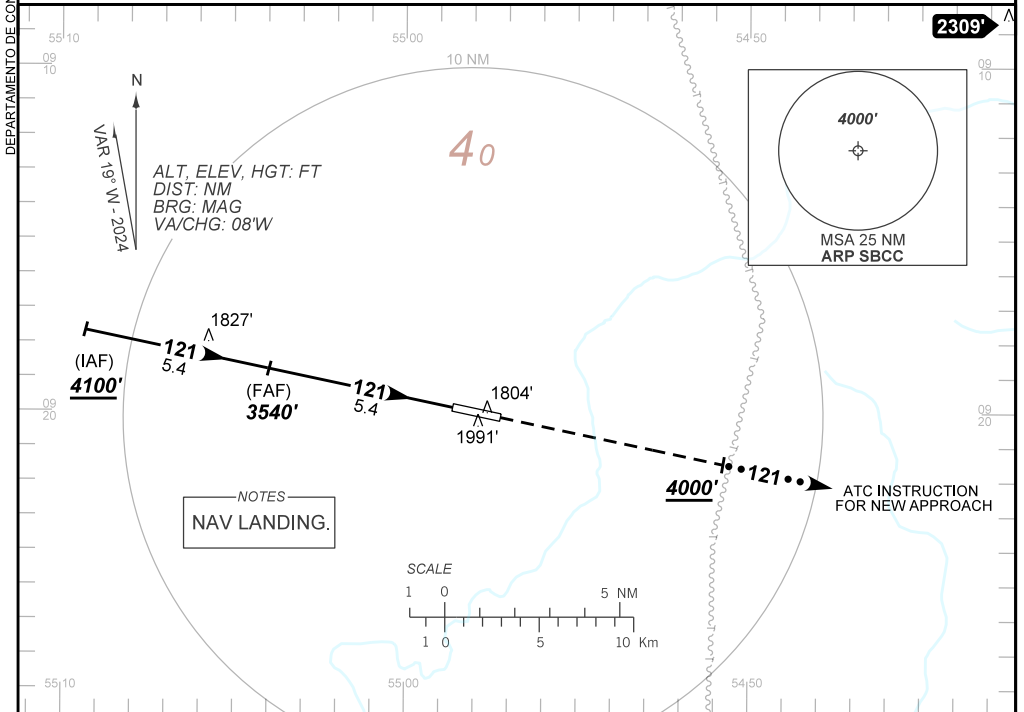
NAV APV RWY 12
 (ONLY CAT E)

AD ELEV: 1777'

| | | | |
|--|-------------------|-------------------------|---|
| ATIS NIL | APP NIL | AFIS CACHIMBO 125.90 | TWR NIL |
| TEMP LNAV/VNAV MIN -20°C / MAX 50°C | FINAL CRS 121° | FAF: 3540' | LNAV/VNAV DA / (OCH): 2115' / (353') |
| | | | N/A |

APCH Perdida: Subir para **4000'** no rumo **121°** e aguardar instruções ATC.

Missed APCH: Climb to **4000'** on course **121°** and expect further ATC instructions.



| | | | | | | | | | | | | | |
|--|------|------|------|------|------|-------|-------------------|-----|-----|-----|-----|-----|------|
| | FAF | 5.0 | 4.0 | 3.0 | 2.0 | RWY12 | Ground Speed (KT) | 090 | 110 | 130 | 150 | 170 | 190 |
| | 3540 | 3404 | 3086 | 2767 | 2449 | ALT | FPM | 500 | 600 | 700 | 800 | 900 | 1000 |
| | 1778 | 1642 | 1324 | 1005 | 687 | (HGT) | FAF-MAPT | NA | | | | | |

| | | |
|-------------|-------------------------|------------------|
| STRAIGHT-IN | CAT | ONLY CAT E |
| | DA / (OCH) | 2115' / (353') |
| NAV APV | ALS/NO ALS/ RVR ALS (m) | NIL / 1600 / NIL |
| | | NA |
| CIRCLING | MDA / (OCH) | NA |
| | VIS (m) | |

CHANGES: NEW CHART.

DEPARTAMENTO DE CONTROLE DO ESPAÇO AÉREO