

INSTRUMENT APPROACH  
CHART (IAC)

RIO DE JANEIRO / Galeão - Antônio Carlos Jobim, INTL (SBGL)

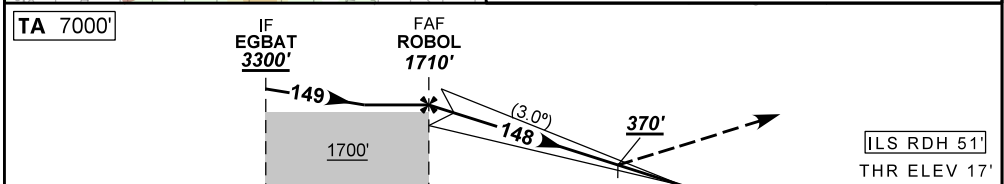
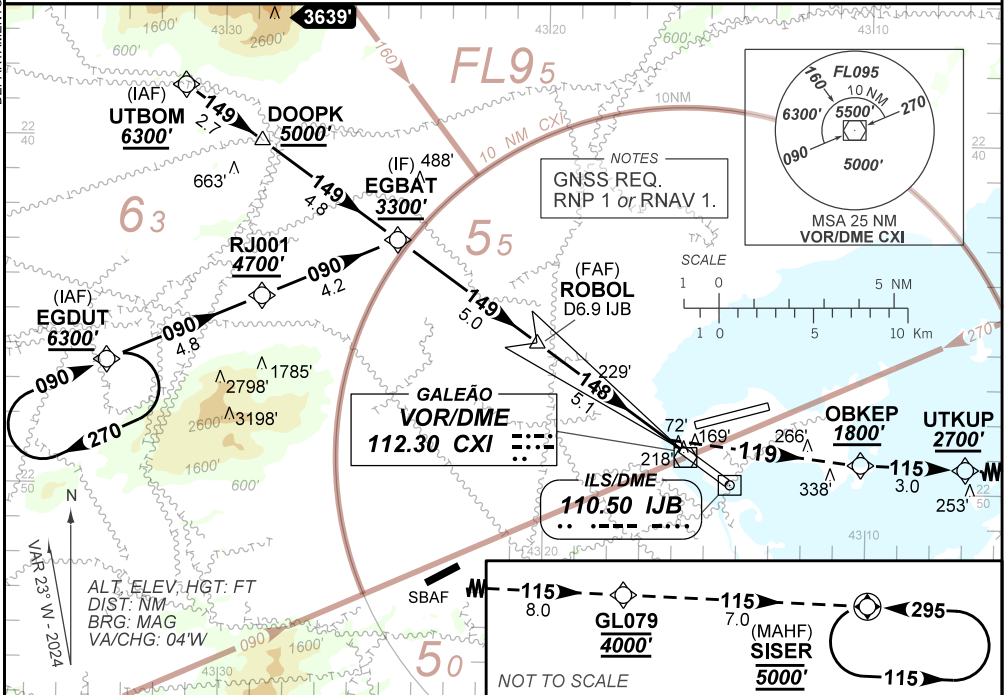
AD ELEV: 28'

ILS Z RWY 15

D-ATIS 127.60	APP RIO 133.30 124.95 134.95 126.20 129.80 128.90 119.35 125.95 134.40 121.25			TWR GALEÃO 118.00 118.20	GNDC GALEÃO 121.65 128.35
ILS/DME IJB 110.50 MHz	FINAL CRS 148°	FAF: 1710'	CAT I DA / (OCH): 370' / (353')		N/A

APCH Perdida: Subir para **5000'**, gradiente MNM 5%. Curvar à ESQUERDA rumo **149** para OBKEP. Após, manter rumo **115** para espera em SISER.

Missed APCH: Climb to **5000'**, MNM gradient 5%. Turn LEFT course **119** to OBKEP. Then, maintain course **115** for holding over SISER.



TA 7000'	IF EGBAT 3300'	FAF ROBOL 1710'	
TO THR 15 (NM)	10.1	5.1	0.9
TO IJB (NM)	11.9	6.9	2.7

NIL	RWY15	Ground Speed (KT)	090	110	130	150	170	190
NIL	ALT	FPM				NIL		
NIL	(HGT)	FAF-MAPT				NA		

STRAIGHT-IN	CAT	A	B	C	D	E
CAT I	DA / (OCH)	370' / (353')				
	ALS/NO ALS/ RVR ALS (m)	900 / 1600 / 850				
CIRCLING	MDA / (OCH)	NA				
	VIS (m)	NA				

DEPARTAMENTO DE CONTROLE DO ESPAÇO AÉREO

CHANGES: HDG, OBST, VAR.