

DEPARTURE CHART
INSTRUMENT (SID)

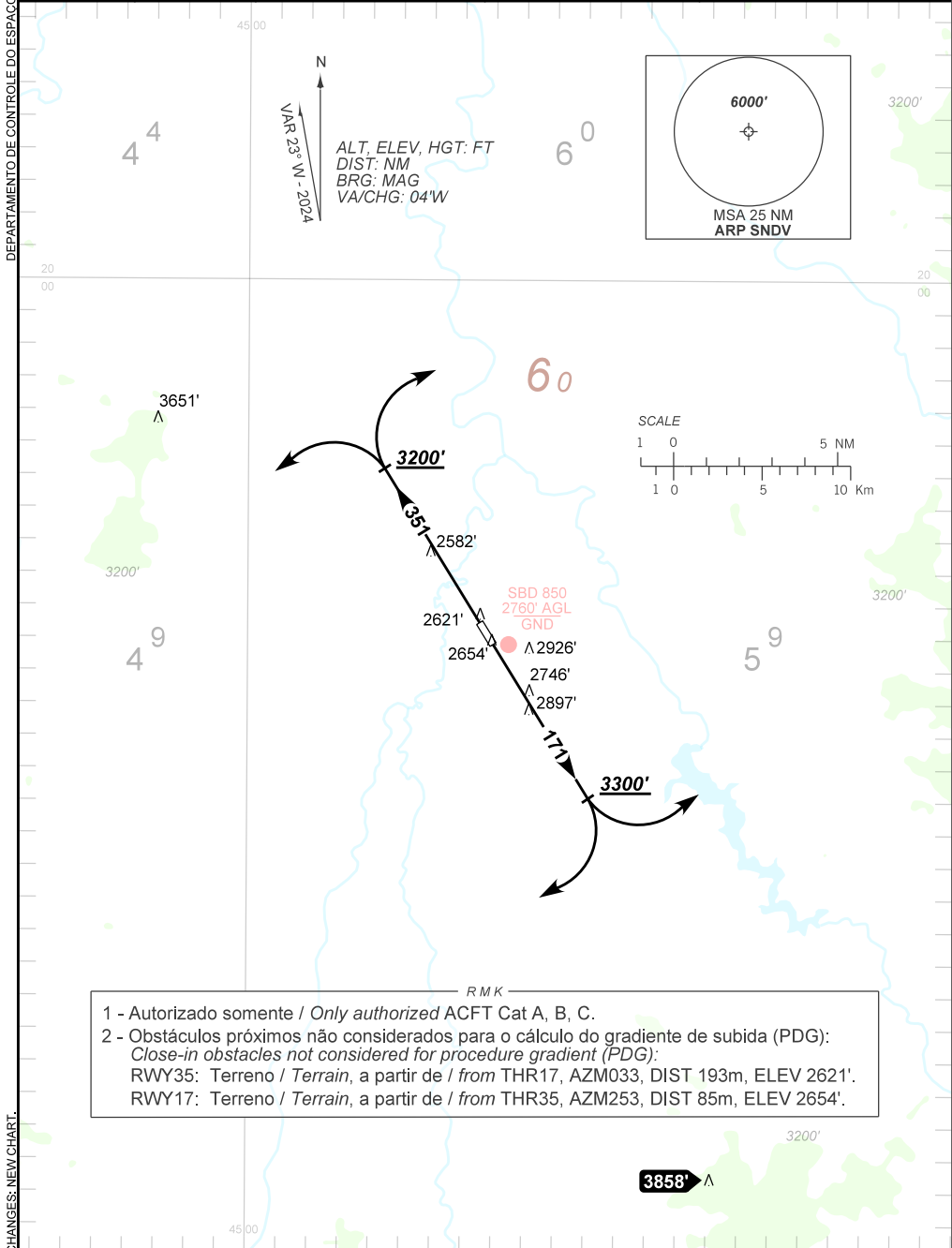
DIVINÓPOLIS / Brigadeiro Antônio Cabral (SNDV)

RWY 17 / 35

OMNI

AD ELEV: 2636'

TA 8000'	ATIS NIL	ERAA 132.35	APP NIL	ACC BRASÍLIA 126.75 124.80 135.55
----------	-------------	----------------	------------	--------------------------------------



R M K

1 - Autorizado somente / Only authorized ACFT Cat A, B, C.
 2 - Obstáculos próximos não considerados para o cálculo do gradiente de subida (PDG):
 Close-in obstacles not considered for procedure gradient (PDG):
 RWY35: Terreno / Terrain, a partir de / from THR17, AZM033, DIST 193m, ELEV 2621'.
 RWY17: Terreno / Terrain, a partir de / from THR35, AZM253, DIST 85m, ELEV 2654'.

CHANGES: NEW CHART.