

INSTRUMENT APPROACH CHART (IAC)

SÃO PEDRO DA ALDEIA / Tenente Jorge Henrique Möller, MIL (SBES)

AD ELEV: 61'

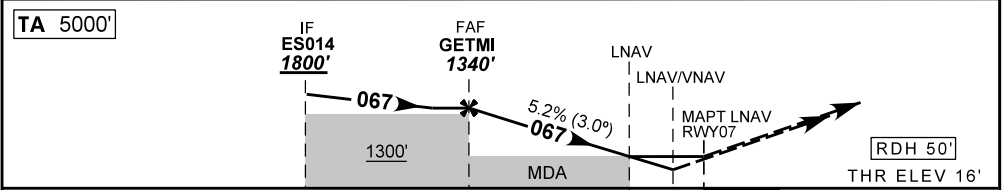
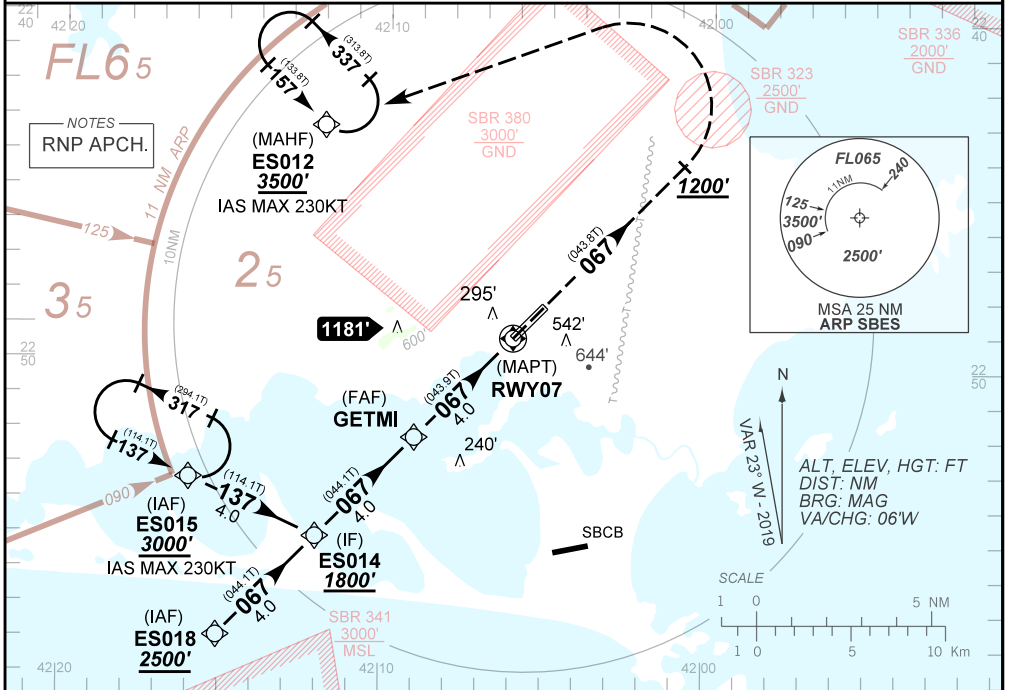
RNP Z RWY 07

ATIS NIL	APP ALDEIA 119.45 120.30	TWR ALDEIA 118.30 122.80 (MIL) 121.50	GNDCL ALDEIA 121.90
--------------------	------------------------------------	-------------------------------------------------	-------------------------------

N/A	FINAL CRS 067°	FAF 1340'	LNAV/VNAV DA / (OCH): REFER TO MNM	LNAV MDA / (OCH): 580' / (570')
-----	--------------------------	---------------------	----------------------------------------------	-------------------------------------------

APCH Perdida: Subir para **3500'**. Manter rumo **067** até **1200'**. Então, curvar à ESQUERDA direto ES012 para espera.
 Missed APCH: Climb to **3500'**. Maintain course **067** until passing **1200'**. Then, turn LEFT direct to ES012 for holding.

RMK: 1) Para sistemas não compensados Baro-VNAV, LNAV/VNAV NÃO AUTORIZADO abaixo de 0°C ou acima de 48°C.
 1) For uncompensated systems Baro-VNAV, LNAV/VNAV NOT AUTHORIZED below 0°C or above 48°C.



TOTHR 07 (NM) 8.0 4.0 1.6 0.0

	GETMI	3.0	2.0	1.6	RWY07	KT	090	110	130	150	170	190
		1340	1021	703	580	FPM	500	600	700	800	950	1000
		1324	1005	687	570	(HGT)	FAF-MAPT	NA				

STRAIGHT-IN	CAT	A	B	C	D	E
	DA / (OCH)	435' / (419')	448' / (432')	459' / (443')	491' / (475')	NA
	ALS/NO ALS/ RVR ALS (m)	NIL / 1600 / NIL				
	MDA / (OCH)	580' / (570')				
LNAV	ALS/NO ALS/ RVR ALS (m)	NIL / 1600 / NIL				
	MDA / (OCH)	NIL / 2600 / NIL				
CIRCLING	MDA / (OCH)	NA				
	VIS (m)	NA				

CHANGES IDENT.